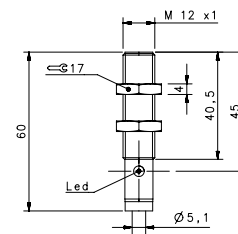
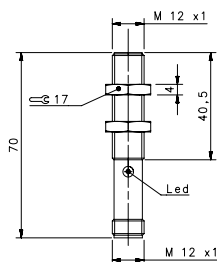


# INDUCTIVE AC M12



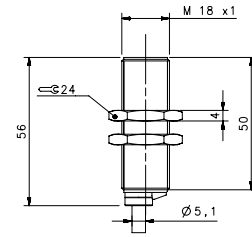
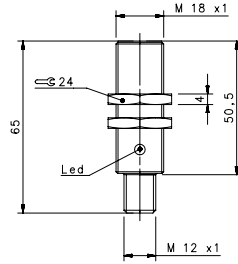
## STANDARD VAC

### FLUSH

				M12 conn	cable
NOMINAL SWITCHING DISTANCE				2 mm	2 mm
10-30 Vdc	PNP/NPN NO-NC	4 wires	order No.	---	---
10-30 Vdc	PNP NO	3 wires	order No.	---	---
10-30 Vdc	PNP NC	3 wires	order No.	---	---
10-30 Vdc	NPN NO	3 wires	order No.	---	---
10-30 Vdc	NPN NC	3 wires	order No.	---	---
10-30 Vdc	PNP NO-NC	4 wires	order No.	---	---
10-30 Vdc	NPN NO-NC	4 wires	order No.	---	---
10-30 Vdc	NO-NC	2 wires	order No.	---	---
20-250 Vac/Vdc	NO	2 wires	order No.	---	---
20-250 Vac/Vdc	NC	2 wires	order No.	---	---
20-250 Vac	NO	2/3 wires	order No.	IS-12-A15-S2 95B060690	IS-12-A15-03 95B060680
10-30 Vdc	Analog 0-20 mA	3 wires	order No.	---	---
NAMUR amplifier	NAMUR	2 wires	order No.	---	---

Nominal Voltage	20+250 Vac (50,60 Hz)	20+250 Vac (50,60 Hz)
Residual Ripple	< 10%	< 10%
Hysteresis	< 10%	< 10%
Max. Output Current	500 mA, inrush:1,5A	500 mA, inrush:1,5A
Min. Output Current	20 mA	20 mA
Residual Current	< 0,7 mA	< 0,7 mA
Voltage Drop	< 4 V (I=100mA)	< 4 V (I=100mA)
Operation Led	Yellow	Yellow
Switching Frequency	25 Hz	25 Hz
Start Up Delay	< 300 ms	< 300 ms
Repeatability	5%	5%
Short Circuit Protection	Present (self-resetting)	Present (self-resetting)
Electric Protection	Against polarity reversal inductive loads	Against polarity reversal inductive loads
Temperature Limit	(-25 ... +70 °C)	(-25 ... +70 °C)
Protection Degree	IP67	IP67
Cable Length	---	2 m
Cable Section	---	2 x 0,25 mm <sup>2</sup>
Housing Material	Nickel-plated brass	Nickel-plated brass
Active face	PA 16	PA 16
Tightening torque	* see page 5 of the Inductive Sensors Catalog	* see page 5 of the Inductive Sensors Catalog
Weight - Cable Output	---	145g
Weight - Connector Output	95g	---

# INDUCTIVE AC M18



## STANDARD VAC

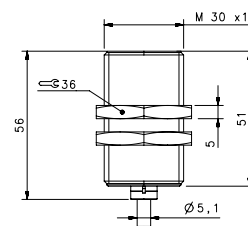
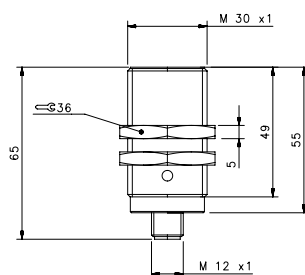
### FLUSH

#### NOMINAL SWITCHING DISTANCE

				M12 conn	cable
				5 mm	5 mm
10-30 Vdc	PNP/NPN NO-NC	4 wires	order No.	---	---
10-30 Vdc	PNP NO	3 wires	order No.	---	---
10-30 Vdc	PNP NC	3 wires	order No.	---	---
10-30 Vdc	NPN NO	3 wires	order No.	---	---
10-30 Vdc	NPN NC	3 wires	order No.	---	---
10-30 Vdc	PNP NO-NC	4 wires	order No.	---	---
10-30 Vdc	NPN NO-NC	4 wires	order No.	---	---
10-30 Vdc	NO-NC	2 wires	order No.	---	---
20-250 Vac/Vdc	NO	2 wires	order No.	---	---
20-250 Vac/Vdc	NC	2 wires	order No.	---	---
20-250 Vac	NO	2/3 wires	order No.	IS-18-A15-S2 95B060780	IS-18-A15-03 95B060770
10-30 Vdc	Analog 0-20 mA	3 wires	order No.	---	---
NAMUR amplifier	NAMUR	2 wires	order No.	---	---

<b>Nominal Voltage</b>	20+250 Vac (50,60 Hz)	20+250 Vac (50,60 Hz)
<b>Residual Ripple</b>	< 10%	< 10%
<b>Hysteresis</b>	< 10%	< 10%
<b>Max. Output Current</b>	500 mA, inrush: 1,5A	500 mA, inrush: 1,5A
<b>Min. Output Current</b>	20 mA	20 mA
<b>Residual Current</b>	< 0,7 mA	< 0,7 mA
<b>Voltage Drop</b>	< 4 V (I=100mA)	< 4 V (I=100mA)
<b>Operation Led</b>	Yellow	Yellow
<b>Switching Frequency</b>	25 Hz	25 Hz
<b>Start Up Delay</b>	< 300 ms	< 300 ms
<b>Repeatability</b>	5%	5%
<b>Short Circuit Protection</b>	Present (self-resetting)	Present (self-resetting)
<b>Electric Protection</b>	Against polarity reversal inductive loads	Against polarity reversal inductive loads
<b>Temperature Limit</b>	(-25 ... +70 °C)	(-25 ... +70 °C)
<b>Protection Degree</b>	IP67	IP67
<b>Cable Length</b>	---	2 m
<b>Cable Section</b>	---	2 x 0,25 mm <sup>2</sup>
<b>Housing Material</b>	Nickel-plated brass	Nickel-plated brass
<b>Active face</b>	PA 16	PA 16
<b>Tightening torque</b>	* see page 5 of the Inductive Sensors Catalog	* see page 5 of the Inductive Sensors Catalog
<b>Weight - Cable Output</b>	---	145g
<b>Weight - Connector Output</b>	95g	---

# INDUCTIVE AC M30

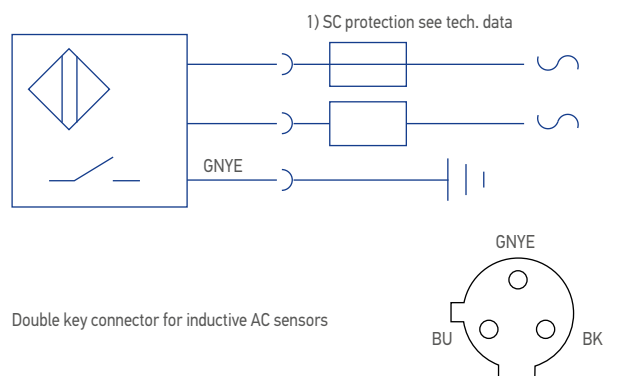


## STANDARD VAC

### FLUSH

				M12 conn	cable
NOMINAL SWITCHING DISTANCE				10 mm	10 mm
10-30 Vdc	PNP/NPN NO-NC	4 wires	order No.	---	---
10-30 Vdc	PNP NO	3 wires	order No.	---	---
10-30 Vdc	PNP NC	3 wires	order No.	---	---
10-30 Vdc	NPN NO	3 wires	order No.	---	---
10-30 Vdc	NPN NC	3 wires	order No.	---	---
10-30 Vdc	PNP NO-NC	4 wires	order No.	---	---
10-30 Vdc	NPN NO-NC	4 wires	order No.	---	---
10-30 Vdc	NO-NC	2 wires	order No.	---	---
20-250 Vac/Vdc	NO	2 wires	order No.	---	---
20-250 Vac/Vdc	NC	2 wires	order No.	---	---
20-250 Vac	NO	2/3wires	order No.	IS-30-A15-S2 95B060820	IS-30-A15-03 95B060810
10-30 Vdc	Analog 0-20 mA	3 wires	order No.	---	---
NAMUR amplifier	NAMUR	2 wires	order No.	---	---
<b>Nominal Voltage</b>				20+250 Vac (50,60 Hz)	20+250 Vac (50,60 Hz)
<b>Residual Ripple</b>				< 10%	< 10%
<b>Hysteresis</b>				< 10%	< 10%
<b>Max. Output Current</b>				500 mA, inrush:1,5A	500 mA, inrush:1,5A
<b>Min. Output Current</b>				20 mA	20 mA
<b>Residual Current</b>				< 0,7 mA	< 0,7 mA
<b>Voltage Drop</b>				< 4 V (I=100mA)	< 4 V (I=100mA)
<b>Operation Led</b>				Yellow	Yellow
<b>Switching Frequency</b>				25 Hz	25 Hz
<b>Start Up Delay</b>				< 300 ms	< 300 ms
<b>Repeatability</b>				5%	5%
<b>Short Circuit Protection</b>				Present (self-resetting)	Present (self-resetting)
<b>Electric Protection</b>				Against polarity reversal inductive loads	Against polarity reversal inductive loads
<b>Temperature Limit</b>				(-25 ... +70 °C)	(-25 ... +70 °C)
<b>Protection Degree</b>				IP67	IP67
<b>Cable Length</b>				---	2 m
<b>Cable Section</b>				---	2 x 0,25 mm <sup>2</sup>
<b>Housing Material</b>				Nickel-plated brass	Nickel-plated brass
<b>Active face</b>				PA 16	PA 16
<b>Tightening torque</b>				* see page 5 of the Inductive Sensors Catalog	* see page 5 of the Inductive Sensors Catalog
<b>Weight - Cable Output</b>				---	145g
<b>Weight - Connector Output</b>				95g	---

## Inductive AC



Stainless Steel housing

LCP active face

Short length

Operating distance 0.8 ... 15 mm

M5, M8, M12, M30

Cable, M8 or M12 connector

2 wires

IP67 protection

#### REDUCTION FACTOR

	ALUMINUM (25°C)	STAINLESS STEEL AISI316L	COPPER	BRASS
FLUSH	0,3...0,5	0,7...0,9	0,2...0,5	0,4...0,6
NON-FLUSH	0,4...0,6	0,7...1,05	0,4...0,5	0,5...0,7



M12/18/30 FLUSH models are ATEX certified

I I 3G EX nA II T6

I I 3D EX tD A22 IP67 T85°C