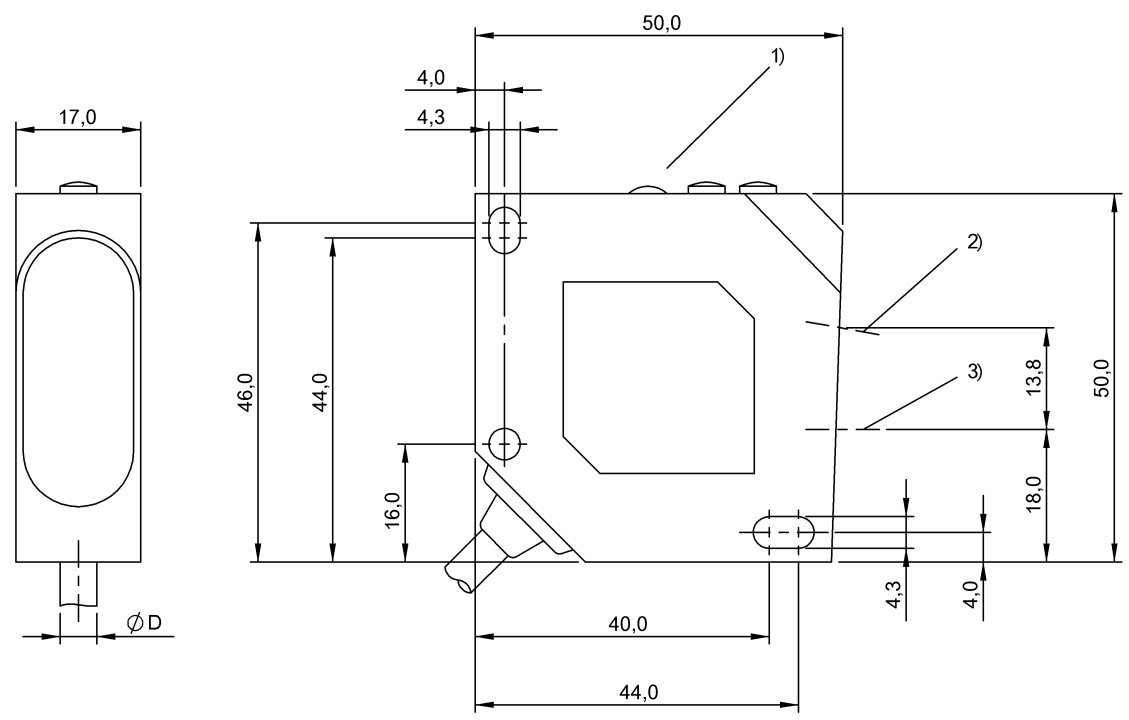
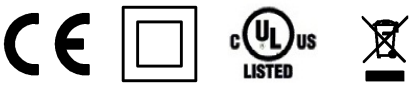


Photoelectric Sensors
BOD 26K-LA01-C-06
Order Code: BOD0001



1) Display and control panel, 2) Optical axis receiver, 3) Optical axis emitter



Basic features

Application	Distance measurement
Approval/Conformity	CE cULus WEEE
Basic standard	IEC 60947-5-2, IEC 60947-5-7
Principle of operation	Photoelectric distance sensor
Series	26K
Style	Square Connection 45°

Display/Operation

Display	LED green: Power Error - LED red
---------	-------------------------------------

Electrical connection

Cable diameter D	5.00 mm
Cable length L	6 m
Conductor cross-section	0.25 mm²
Connection	Cable, 6.00 m, PVC
Number of conductors	4
Polarity reversal protected	yes
Short-circuit protection	yes

Electrical data

No-load current I _o max. at U _e	35 mA
Operating voltage U _b	18...28 VDC
Protection class	II
Rated insulation voltage U _i	50 V DC
Rated operating voltage U _e DC	24 V

Environmental conditions

Ambient temperature	0...45 °C
IP rating	IP67

Functional safety

MTTF (40 °C) 265 a

Interface

Analog output Analog, voltage 0...10 V
Output characteristic linear increasing

Material

Housing material ABS
Material jacket PVC
Material sensing surface PMMA

Mechanical data

Dimension 17 x 50 x 50 mm
Mounting part Screw M4

Remarks

Order accessories separately.
For additional information, refer to user's guide.
For more information about MTTF and B10d see MTTF / B10d Certificate

Indication of the MTTF- / B10d value does not represent a binding composition and/or life expectancy assurance; these are simply experiential values with no warranty implications. These declared values also do not extend the expiration period for defect claims or affect it in any way.

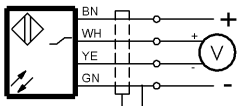
Optical features

Ambient light max. 3000 Lux
Average power Po max. 1 mW
Beam characteristic Divergent
Laser class per IEC 60825-1 2
Light spot size Ø 0.8 mm at 65 mm
Light type Laser red light
Principle of optical operation Triangulation
Pulse duration t max. 8 µs
Pulse frequency 6 kHz
Pulse power Pp max. 2.0 mW
Wave length 670 nm

Range/Distance

Accuracy ±1 % FS
Range 45...85 mm
Resolution ≤ 80 µm

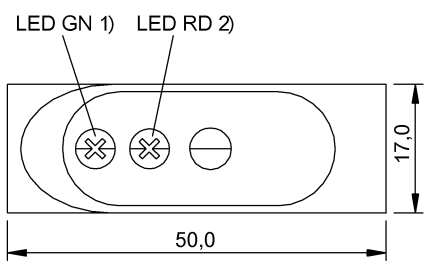
Wiring Diagrams



Photoelectric Sensors
BOD 26K-LA01-C-06
Order Code: BOD0001

BALLUFF

Help Views

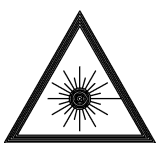


- 1) Operating voltage
- 2) Error

Opto Symbols



Warning Symbols



LASER BEAM - DO NOT STARE INTO THE LIGHT BEAM!

LASER CLASS 2 per IEC60825-1: 2003-10