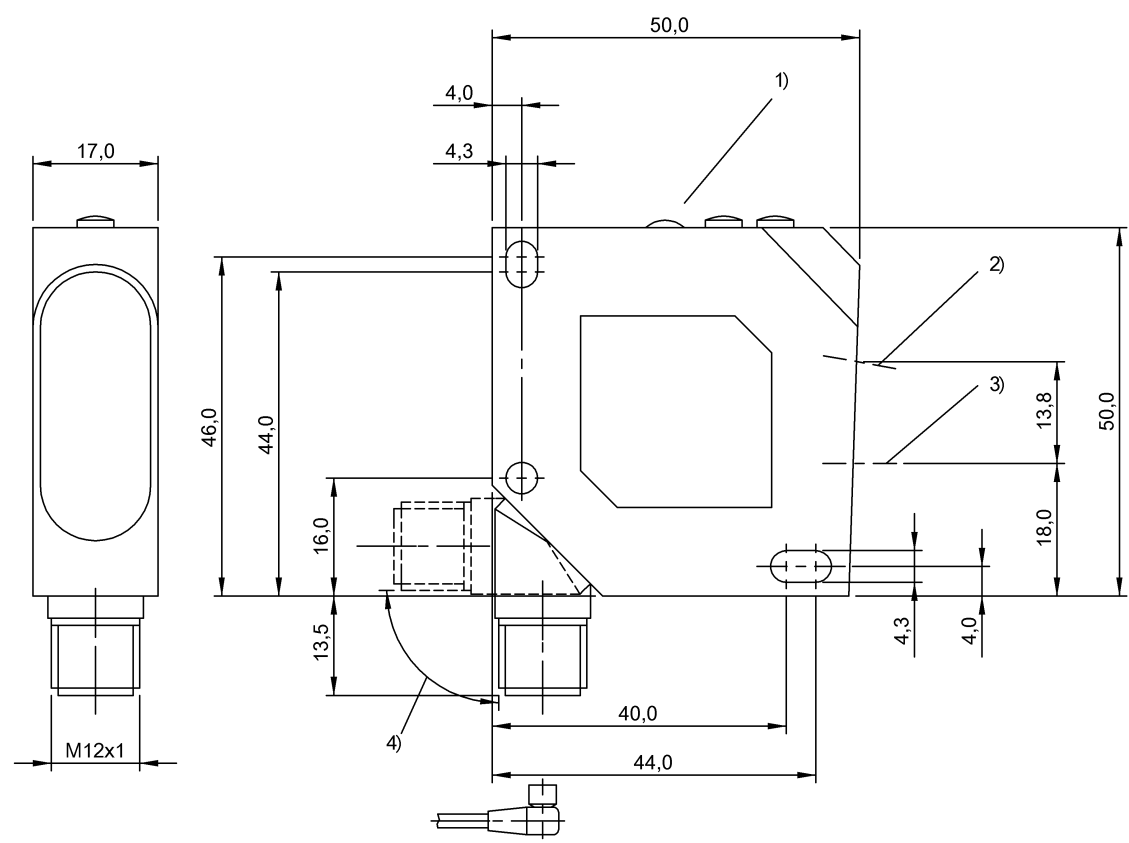
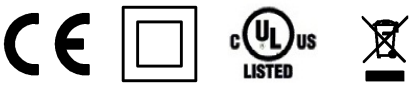


Photoelectric Sensors  
BOD 26K-LA02-S4-C  
Order Code: BOD0004



1) Display and control panel, 2) Optical axis receiver, 3) Optical axis emitter, 4) rotatable 270°



Basic features

Application	Distance measurement
Approval/Conformity	CE cULus WEEE
Basic standard	IEC 60947-5-2, IEC 60947-5-7
Principle of operation	Photoelectric distance sensor
Series	26K
Style	Square Connection can be rotated

Display/Operation

Display	LED green: Power Error - LED red
---------	-------------------------------------

Electrical connection

Connection	Connector, M12x1-Male, 4-pin
Polarity reversal protected	yes
Short-circuit protection	yes

Electrical data

No-load current $I_o$ max. at $U_e$	35 mA
Operating voltage $U_b$	18...28 VDC
Protection class	II
Rated insulation voltage $U_i$	50 V DC
Rated operating voltage $U_e$ DC	24 V

Environmental conditions

Ambient temperature	0...45 °C
IP rating	IP67

Functional safety

MTTF (40 °C)	265 a
--------------	-------

Interface

Analog output	Analog, voltage 0...10 V
Output characteristic	linear increasing

Material

Housing material	ABS
Material sensing surface	PMMA

Mechanical data

Dimension	17 x 50 x 50 mm
Mounting part	Screw M4

Optical features

Ambient light max.	3000 Lux
Average power Po max.	1 mW
Beam characteristic	Divergent
Laser class per IEC 60825-1	2
Light spot size	Ø 0.8 mm at 65 mm
Light type	Laser red light
Principle of optical operation	Triangulation
Pulse duration t max.	8 µs
Pulse frequency	6 kHz
Pulse power Pp max.	2.0 mW
Wave length	670 nm

Range/Distance

Accuracy	±1 % FS
Range	45...85 mm
Resolution	≤ 20 µm

Remarks

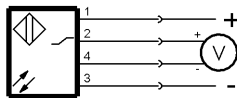
Order accessories separately.  
Only for applications per NFPA 79 (machines with a supply voltage of maximum 600 V). Use an R/C (CYJV2) cable with suitable properties for attaching the device.  
For additional information, refer to user's guide.  
For more information about MTTF and B10d see MTTF / B10d Certificate

Indication of the MTTF- / B10d value does not represent a binding composition and/or life expectancy assurance; these are simply experiential values with no warranty implications. These declared values also do not extend the expiration period for defect claims or affect it in any way.

Connector Drawings



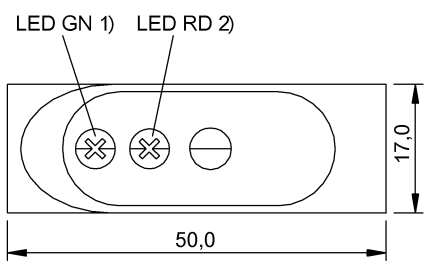
Wiring Diagrams



Photoelectric Sensors  
BOD 26K-LA02-S4-C  
Order Code: BOD0004



Help Views

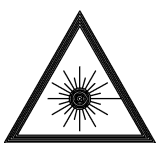


- 1) Operating voltage
- 2) Error

Opto Symbols



Warning Symbols



LASER BEAM - DO NOT STARE INTO THE LIGHT BEAM!

LASER CLASS 2 per IEC60825-1: 2003-10