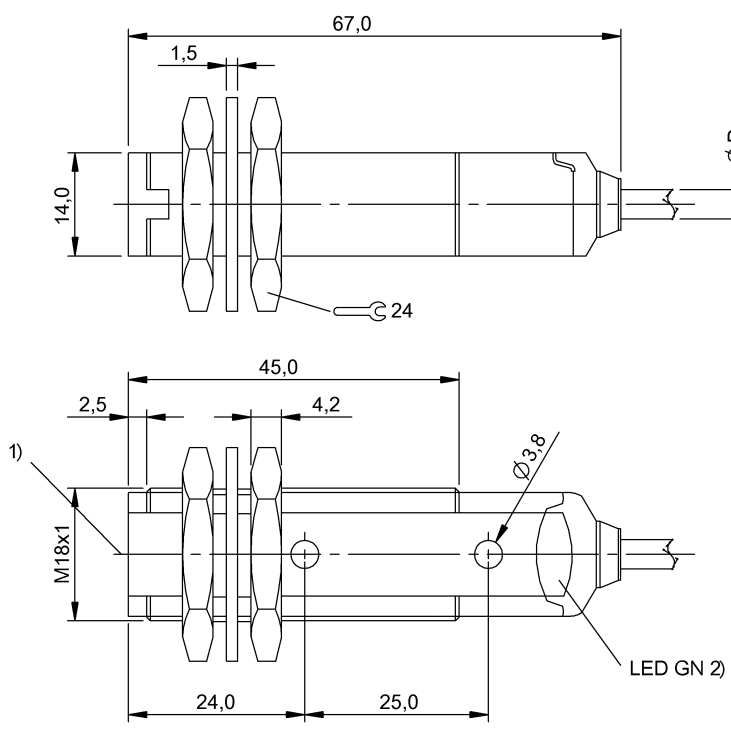


Photoelectric Sensors
BLS 18KF-XX-1P-L-02
Order Code: BOS00EN



1) Optical axis, 2) Operating voltage



Basic features	
Approval/Conformity	CE UKCA cULus WEEE
Basic standard	IEC 60947-5-2
Principle of operation	Photoelectric sensor
Reference receiver	BLE 18KF-..-1PP-..
Series	18KF
Style	Flat cylinder Straight optics
Trademark	Global
Display/Operation	
Display	LED green: Power

Electrical connection	
Cable diameter D	4.00 mm
Cable length L	2 m
Conductor cross-section	0.14 mm ²
Connection	Cable, 2.00 m, PVC
Number of conductors	4
Polarity reversal protected	yes
Electrical data	
Input function	Test (Emitter off)
No-load current I _o max. at U _e	35 mA
Operating voltage U _b	10...30 VDC
Rated insulation voltage U _i	75 V DC
Rated operating voltage U _e DC	24 V
Ripple max. (% of U _e)	8 %

Environmental conditions

Ambient temperature	-25...55 °C
EN 60068-2-27, Shock	Half-sinus, 30 g _n , 11 ms, 3x6
EN 60068-2-6, Vibration	10...55 Hz, amplitude 0.5 mm, 3x30 min
IP rating	IP67

Functional safety

MTTF (40 °C)	991 a
--------------	-------

Material

Housing material	PBT
Material jacket	PVC
Material sensing surface	PMMA

Mechanical data

Dimension	Ø 18 x 67 mm
Mounting part	Screw M3 Nut M18x1
Tightening torque max.	1.5 Nm

Optical features

Light type	Infrared
Principle of optical operation	Through-beam sensor (Emitter)
Wave length	880 nm

Range/Distance

Range	0...20 m
Rated operating distance Sn	20 m, Adjustable

Remarks

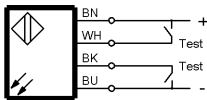
For additional information, refer to user's guide.

Order accessories separately.

For more information about MTTF and B10d see MTTF / B10d Certificate

Indication of the MTTF- / B10d value does not represent a binding composition and/or life expectancy assurance; these are simply experiential values with no warranty implications. These declared values also do not extend the expiration period for defect claims or affect it in any way.

Wiring Diagrams



Opto Symbols

