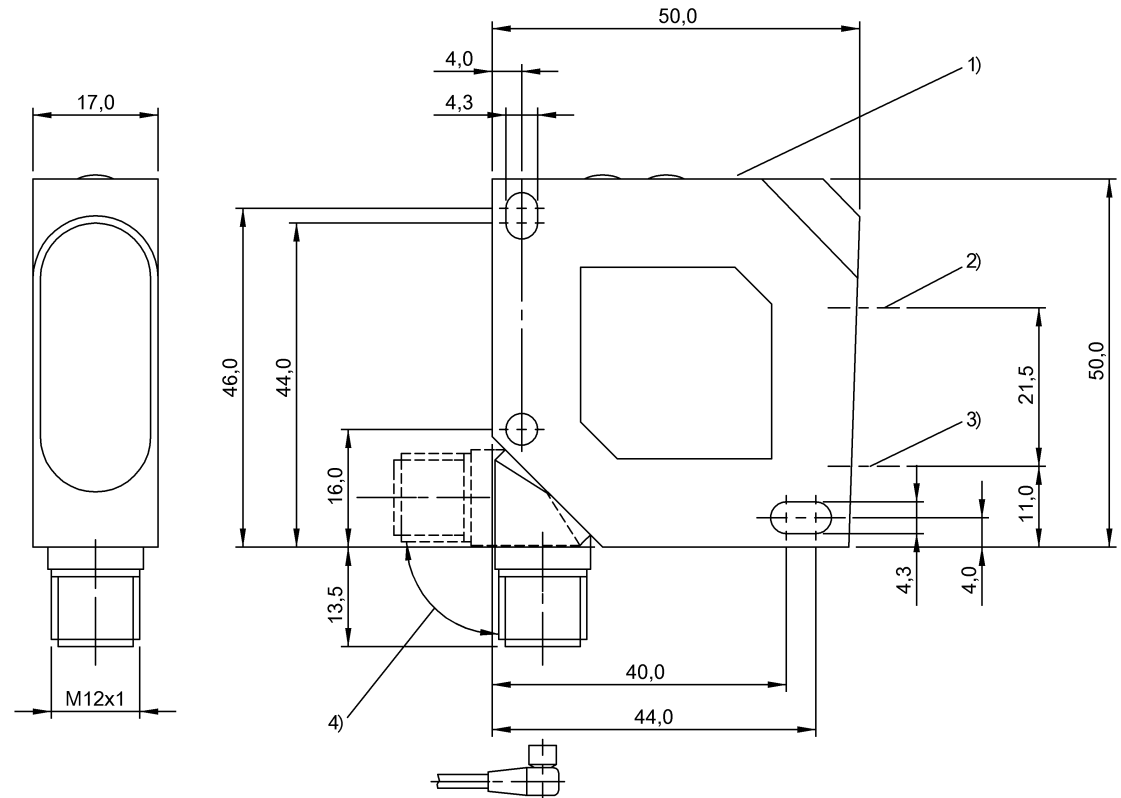


Photoelectric Sensors
BOD 26K-LBR05-S115-C
Order Code: BOD000E

BALLUFF



1) Display and control panel, 2) Optical axis emitter, 3) Optical axis receiver, 4) rotatable 270°



Basic features

Application	Distance measurement
Approval/Conformity	CE cULus WEEE
Basic standard	IEC 60947-5-2, IEC 60947-5-7
Principle of operation	Photoelectric distance sensor
Series	26K
Style	Square Connection can be rotated

Display/Operation

Adjuster	Key (2x)
Display	Output function- LED yellow Ready - LED green Input function - LED green Setup mode - LED green, flashing Function selected - LED red Stability - LED green Time function active: LED green Additional function active: LED green

Photoelectric Sensors
BOD 26K-LBR05-S115-C
Order Code: BOD000E

BALLUFF

Setting	Key disable on/off Switching distance, 2 values Working range On-/off delay Characteristic curve mode off/0%/50% Analog value output mode Master/Slave for differential measurement Output/input for Q1 Switching-/Supplementary output for Q2 Averaging mode off/4ms/40ms Light-on/dark-on Input mode for Q1 Factory setting (Reset)
---------	---

Electrical connection

Connection	Connector, M12x1-Male, 8-pin
Polarity reversal protected	yes
Short-circuit protection	yes

Electrical data

Input function	Emitter on/off Trigger
Load capacitance max. at U _e	0.1 µF
Load resistance R _L max. (Analog I)	500 ohms
Mean life expectancy	50,000 h, 40 °C
No-load current I _o max. at U _e	40 mA
Operating voltage U _b	18...30 VDC
Protection class	II
Rated insulation voltage U _i	50 V DC
Rated operating current I _e	100 mA
Rated operating voltage U _e DC	24 V
Ready delay t _v max.	300 ms
Switching frequency	1000 Hz
Turn-off delay t _{off} max.	0.5 ms
Turn-on delay t _{on} max.	0.5 ms

Environmental conditions

Ambient temperature	-10...60 °C
IP rating	IP67

Remarks

Order accessories separately.

Only for applications per NFPA 79 (machines with a supply voltage of maximum 600 V). Use an R/C (CYJV2) cable with suitable properties for attaching the device.

For additional information, refer to user's guide.

For more information about MTTF and B10d see MTTF / B10d Certificate

Indication of the MTTF- / B10d value does not represent a binding composition and/or life expectancy assurance; these are simply experiential values with no warranty implications. These declared values also do not extend the expiration period for defect claims or affect it in any way.

Functional safety

MTTF (40 °C)	9 a
--------------	-----

Interface

Analog output	Analog, current 4...20 mA
Duration of time function	50 ms
Interface	RS485
Output characteristic	linear rising/falling
Switching output	3x PNP normally open/normally closed (NO/NC)
Time function	switch-off delay

Material

Housing material	ABS
Material sensing surface	PMMA

Mechanical data

Dimension	17 x 50 x 50 mm
Mounting part	Screw M4

Optical features

Ambient light max.	5000 Lux
Average power P _o max.	1 mW
Beam characteristic	Divergent
Laser class per IEC 60825-1	2
Light spot size	2 x 4.5 mm at 300 mm
Light type	Laser red light
Principle of optical operation	Triangulation
Switching function, optical	Light/dark switching
Wave length	650 nm

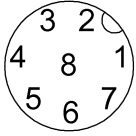
Range/Distance

Accuracy	±0.25 % FS
Range	80...300 mm, adjustable
Rated operating distance S _n	300 mm Adjustable
Repeat accuracy	0.25 %FS
Resolution	0.1 %FS

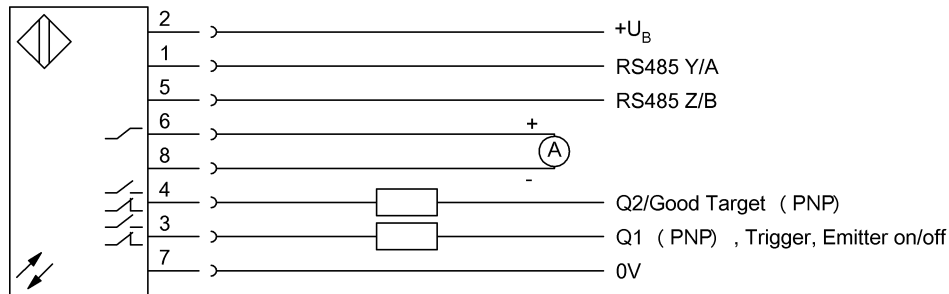
Photoelectric Sensors
BOD 26K-LBR05-S115-C
Order Code: BOD000E

BALLUFF

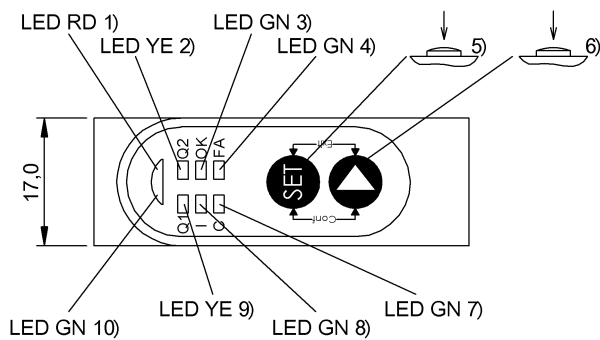
Connector Drawings



Wiring Diagrams



Help Views

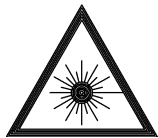


- 1) Function activated
- 2) Output function
- 3) Stability
- 4) Ancillary function active
- 5) Confirm teach-in/selection
- 6) Function/mode select
- 7) Master/Slave active
- 8) Input function active
- 9) Output/input function.
- 10) Ready/Setup mode

Opto Symbols



Warning Symbols



LASER BEAM - DO NOT STARE INTO THE LIGHT BEAM!

LASER CLASS 2 per IEC60825-1: 2003-10