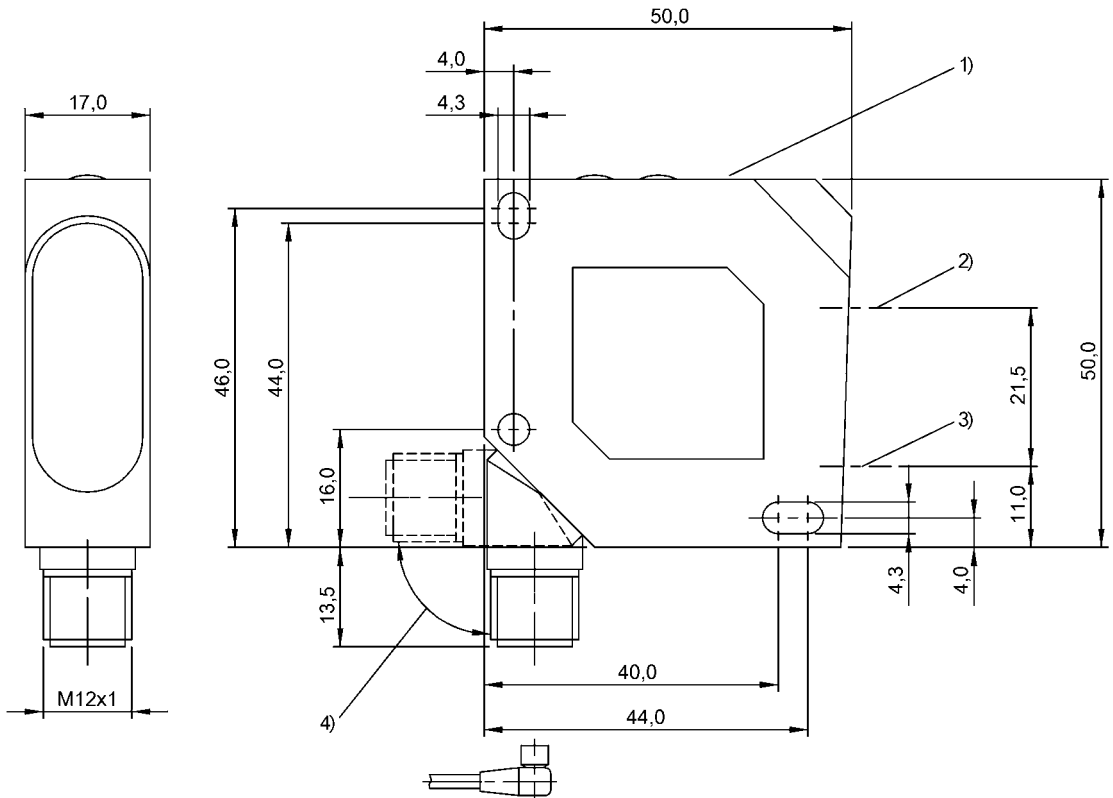
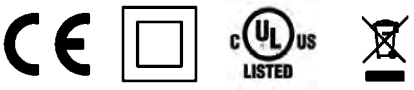


Photoelectric Sensors
BOD 26K-LB07-S92-C
Order Code: BOD0008



1) Display and control panel, 2) Optical axis emitter, 3) Optical axis receiver, 4) rotatable 270°



Basic features

Application	Distance measurement
Approval/Conformity	CE cULus WEEE
Basic standard	IEC 60947-5-2, IEC 60947-5-7
Principle of operation	Photoelectric distance sensor
Series	26K
Style	Square Connection can be rotated

Display/Operation

Adjuster	Key (2x)
Display	Output function- LED yellow Ready - LED green Setup mode - LED green, flashing Function activated - LED red Switching function NC - LED green Stability - LED green Factory setting active: LED green Additional function active: LED green
Setting	Switching distance, 2 values Working range Factory setting (Reset) Averaging mode off/4ms/40ms Light-on/dark-on

Electrical connection

Connection	Connector, M12x1-Male, 5-pin
Polarity reversal protected	yes
Short-circuit protection	yes

Photoelectric Sensors
BOD 26K-LB07-S92-C
Order Code: BOD0008

BALLUFF

Electrical data

Input function	Key disable Emitter on/off
Load capacitance max. at Ue	0.1 µF
Load resistance RL max. (Analog I)	500 ohms
Mean life expectancy	50,000 h, 40 °C
No-load current Io max. at Ue	40 mA
Operating voltage Ub	18...30 VDC
Protection class	II
Rated insulation voltage Ui	50 V DC
Rated operating current Ie	100 mA
Rated operating voltage Ue DC	24 V
Ready delay tv max.	300 ms
Switching frequency	1000 Hz
Turn-off delay toff max.	0.5 ms
Turn-on delay ton max.	0.5 ms

Environmental conditions

Ambient temperature	-10...60 °C
IP rating	IP67

Functional safety

MTTF (40 °C)	9 a
--------------	-----

Interface

Analog output	Analog, current 4...20 mA
Output characteristic	linear rising/falling
Switching output	PNP normally open/normally closed (NO/NC)

Material

Housing material	ABS
Material sensing surface	PMMA

Mechanical data

Dimension	17 x 50 x 50 mm
Mounting part	Screw M4

Optical features

Ambient light max.	5000 Lux
Average power Po max.	1 mW
Beam characteristic	Divergent
Laser class per IEC 60825-1	2
Light spot size	2 x 4.5 mm at 300 mm
Light type	Laser red light
Principle of optical operation	Triangulation
Switching function, optical	Light/dark switching
Wave length	650 nm

Range/Distance

Accuracy	±0.25 % FS
Range	80...300 mm, adjustable
Rated operating distance Sn	300 mm Adjustable
Resolution	0.1 %FS

Remarks

Order accessories separately.

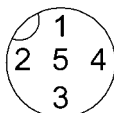
Only for applications per NFPA 79 (machines with a supply voltage of maximum 600 V). Use an R/C (CYJV2) cable with suitable properties for attaching the device.

For additional information, refer to user's guide.

For more information about MTTF and B10d see MTTF / B10d Certificate

Indication of the MTTF- / B10d value does not represent a binding composition and/or life expectancy assurance; these are simply experiential values with no warranty implications. These declared values also do not extend the expiration period for defect claims or affect it in any way.

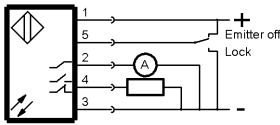
Connector Drawings



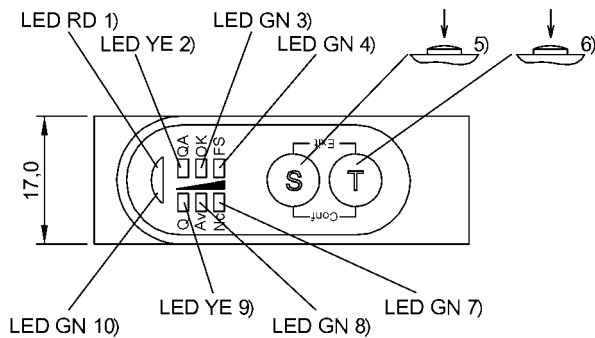
Photoelectric Sensors
BOD 26K-LB07-S92-C
Order Code: BOD0008

BALLUFF

Wiring Diagrams



Help Views

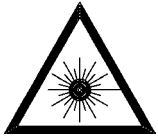


- 1) Function activated
- 2) Object in range
- 3) Stability
- 4) Factory default active
- 5) Confirm teach-in/selection
- 6) Function/mode select
- 7) Dark-on active
- 8) Average value mode active
- 9) Output function
- 10) Ready/Setup mode

Opto Symbols



Warning Symbols



LASER BEAM - DO NOT STARE INTO THE LIGHT BEAM!

LASER CLASS 2 per IEC60825-1: 2003-10