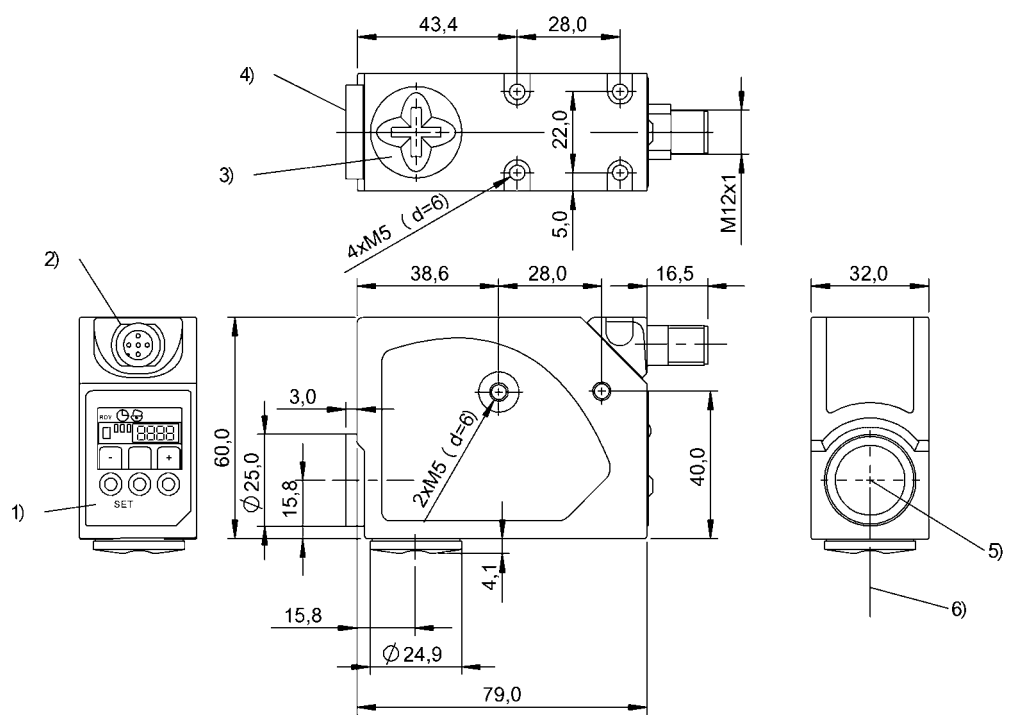


Photoelectric Sensors
BKT 67M-005-U-S92
Order Code: BKT0005



1) Display and control panel, 2) rotatable 270°, 3) Cover cap, removable, 4) standard lens, removable, 5) Light exit standard, 6) Light exit optional



Basic features		Display/Operation	
Additional features	Optics convertible (light exit 0°/ 90°), vertical light spot	Adjuster	Key (3x)
Approval/Conformity	CE UKCA cULus WEEE	Display	Output function- LED yellow Ready - LED green Error/short circuit - segment display Short circuit - LED green, flashing PNP/NPN - LED green, flashing Scattered light amount - segment indicator Buttons active: LED green Time function active: LED green
Basic standard	IEC 60947-5-2		
Principle of operation	Contrast sensor		
Series	67M		
Style	Square Connection can be rotated		

Setting	Contrast (switching point) Switching output PNP/NPN Light-on/dark-on Time function on/off Factory setting (Reset) Delay time Segment display on/off Teach stat./dyn./man. Button lock off Read direction for segment display Hysteresis (3 levels)
---------	--

Electrical connection

Connection	Connector, M12x1-Male
Polarity reversal protected	yes
Protection against device mix-ups	yes
Short-circuit protection	yes

Electrical data

Input function	Same function as SET button
No-load current I _o max. at U _e	35 mA
Operating voltage U _b	10...30 VDC
Protection class	II
Rated insulation voltage U _i	75 V DC
Rated operating current I _e	100 mA
Rated operating voltage U _e DC	24 V
Ready delay t _v max.	300 ms
Ripple max. (% of U _e)	8 %
Switching frequency	30000 Hz
Turn-off delay t _{off} max.	0.017 ms
Turn-on delay t _{on} max.	0.017 ms
Voltage drop U _d max. at I _e	2 V

Environmental conditions

Ambient temperature	-10...55 °C
Contamination scale	3
EN 60068-2-27, Shock	Half-sinus, 30 g _n , 11 ms, 3x6 Half-sinus, 30 g _n , 6 ms, 3x10000
EN 60068-2-6, Vibration	10...55 Hz, amplitude 1 mm, 3x2 h
IP rating	IP67

Interface

Duration of time function	0...100 ms
Switching output	PNP/NPN normally open/normally closed (NO/NC)
Time function	switch-off delay Turn-on delay

Material

Housing material	Aluminium, Die casting, Painted
Material sensing surface	Glass
Surface protection	Painted

Mechanical data

Dimension	32 x 64 x 82 mm
Mounting part	Screw M5

Optical features

Ambient light max.	5000 Lux
Beam characteristic	Focused
LED group per IEC 62471	Exempt Group
Light spot size	1.5 x 5 mm at 9 mm
Light type	blue light/green light/red light
Principle of optical operation	Diffuse sensor, focused
Switching function, optical	Light/dark switching
Wave length	465 nm/520 nm/630 nm

Range/Distance

Range	6...12 mm
-------	-----------

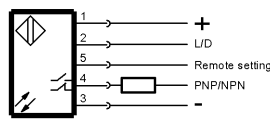
Remarks

Do not press key using a pointed tool.
Order accessories separately.
For additional information, refer to user's guide.
The sensor is functional again after the overload has been eliminated.
Reference object (target): Color bar card, 100 x 100, contrast yellow/white and blue/black, lateral approach of color bars, approach direction vertical to light spot length.

Photoelectric Sensors
BKT 67M-005-U-S92
Order Code: BKT0005



Wiring Diagrams



Opto Symbols

