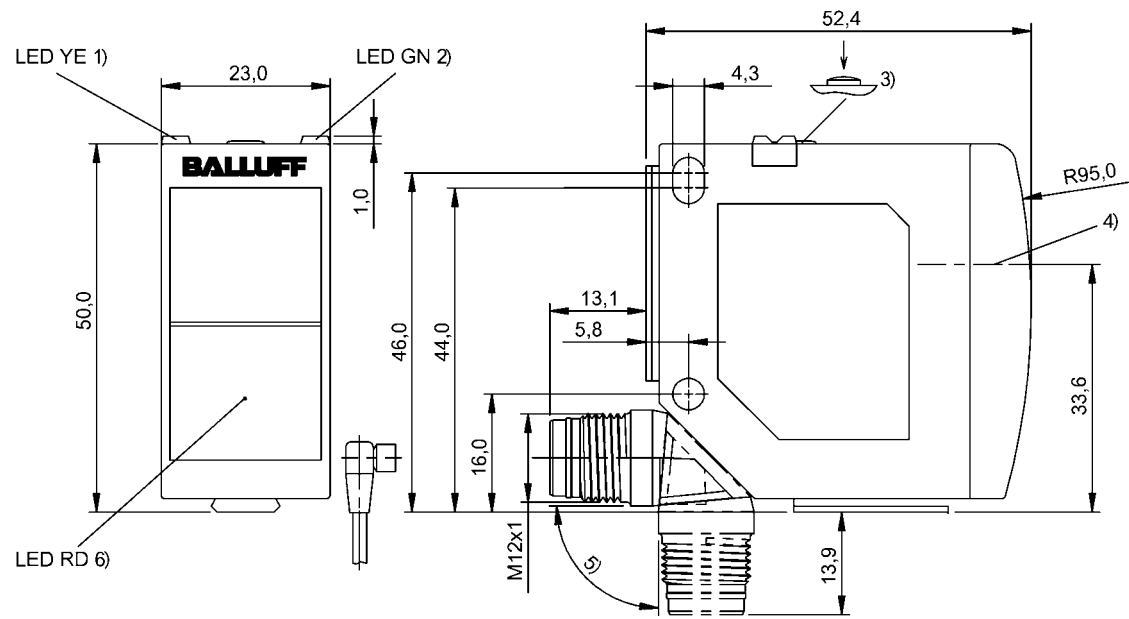


Photoelectric Sensors  
BOS 23K-PU-LE10-S4  
Order Code: BOS016L



1) Output function/Error, 2) Power/setting mode, 3) Sn, light/dark, 4) Optical axis, 5) rotatable 270°, 6) Alignment good/limit area



Basic features

Approval/Conformity	Ecolab CE cULus WEEE
Basic standard	IEC 60947-5-2
Principle of operation	Photoelectric sensor
Reference emitter	BOS 23K-XT-LS11-S4
Series	23K
Style	Square Connection can be rotated

Display/Operation

Adjuster	button
Display	Output function- LED yellow Orientation good - LED red LED green: Power Teach - LED yellow+green, alt. Setting NO/NC - LED green, flashing Error - LED yellow, flashing Limit range - LED red, flashing
Setting	Rated switching distance (Sn) Light-on/dark-on

Electrical connection

Connection	Connector, M12x1-Male, 4-pin
Polarity reversal protected	yes
Protection against device mix-ups	yes
Short-circuit protection	yes

Photoelectric Sensors  
BOS 23K-PU-LE10-S4  
Order Code: BOS016L



Electrical data

Input function	Key disable on/off Same function as button
No-load current I <sub>o</sub> max. at U <sub>e</sub>	30 mA
Operating voltage U <sub>b</sub>	10...30 VDC
Protection class	II
Rated insulation voltage U <sub>i</sub>	75 V DC
Rated operating current I <sub>e</sub>	100 mA
Rated operating voltage U <sub>e</sub> DC	24 V
Ready delay t <sub>v</sub> max.	300 ms
Residual current I <sub>r</sub> max.	50 µA
Ripple max. (% of U <sub>e</sub> )	10 %
Switching frequency	3500 Hz
Turn-off delay t <sub>off</sub> max.	0.15 ms
Turn-on delay t <sub>on</sub> max.	0.15 ms
Utilization category	DC -13
Voltage drop U <sub>d</sub> max. at I <sub>e</sub>	2 V

Environmental conditions

Ambient temperature	-20...60 °C
EN 60068-2-27, Shock	Half-sinus, 30 g <sub>n</sub> , 11 ms, 3x6
EN 60068-2-6, Vibration	10...55 Hz, amplitude 0.5 mm, 3x30 min
IP rating	IP6x
IP rating per DIN 40050	IPx9K

Functional safety

MTTF (40 °C)	494 a
--------------	-------

Interface

Switching output	PNP normally open/normally closed (NO/NC)
------------------	---

Material

Housing material	PC ABS
Material sensing surface	PMMA

Mechanical data

Dimension	23 x 51 x 52.4 mm
Mounting part	Screw M4
Tightening torque max.	1.5 Nm

Optical features

Ambient light max.	5000 Lux
Light type	Laser red light
Principle of optical operation	Through-beam sensor (receiver)
Switching function, optical	dark-on/light-on

Range/Distance

Range	0...30 m
Rated operating distance S <sub>n</sub>	30 m Adjustable

Remarks

The sensor is functional again after the overload has been eliminated.  
Actuation object (target): gray card, 200 x 200, 90 % remission, lateral approach  
Teach-in also possible when object is in motion.  
For additional information, refer to user's guide.  
Order accessories separately.  
Do not press key using a pointed tool.  
For more information about MTTF and B10d see MTTF / B10d Certificate

Indication of the MTTF- / B10d value does not represent a binding composition and/or life expectancy assurance; these are simply experiential values with no warranty implications. These declared values also do not extend the expiration period for defect claims or affect it in any way.

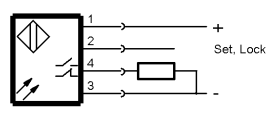
Connector Drawings



Photoelectric Sensors  
BOS 23K-PU-LE10-S4  
Order Code: BOS016L



Wiring Diagrams



Opto Symbols

