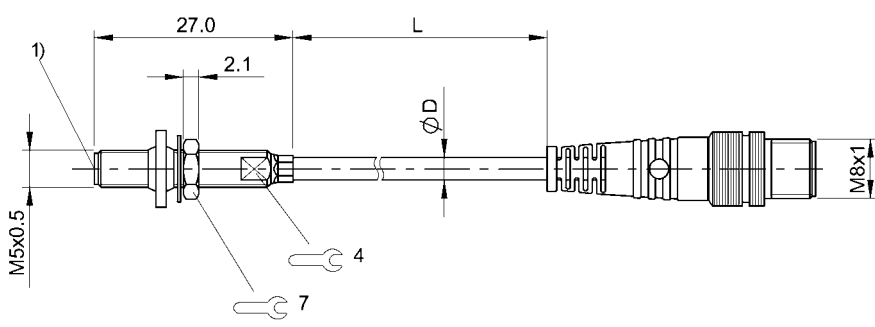


Inductive Sensors  
BES M05ED-POD08B-BP00,3-GS49-R03  
Order Code: BES03LE



1) Sensing surface



Basic features

Approval/Conformity	CE
	UKCA
	cULus
	WEEE
Basic standard	IEC 60947-5-2

Display/Operation

Function indicator	no
Power indicator	no

Electrical connection

Cable diameter D	3.00 mm
Cable length L	0.3 m
Connection	M8x1-Male, 3-pin
Connection type	Cable with connector, 0.30 m, PUR
Polarity reversal protected	yes
Protection against device mix-ups	yes
Short-circuit protection	yes

Electrical data

Load capacitance max. at Ue	0.2 µF
Min. operating current Im	1 mA
No-load current Io max., damped	3 mA
No-load current Io max., undamped	10 mA
Operating voltage Ub	10...30 VDC
Output resistance Ra	Open collector
Rated insulation voltage Ui	75 V DC
Rated operating current Ie	100 mA
Rated operating voltage Ue DC	24 V
Rated short circuit current	100 A
Ready delay tv max.	25 ms
Residual current Ir max.	80 µA
Ripple max. (% of Ue)	10 %
Switching frequency	3000 Hz
Utilization category	DC -13
Voltage drop static max.	3 V

Environmental conditions

Ambient temperature	-25...70 °C
Contamination scale	3
EN 60068-2-27, Shock	Half-sinus, 30 gn, 11 ms
EN 60068-2-6, Vibration	55 Hz, amplitude 1 mm, 3x30 min
IP rating	IP67

Functional safety

MTTF (40 °C)	830 a
--------------	-------

Inductive Sensors  
BES M05ED-POD08B-BP00,3-GS49-R03  
Order Code: BES03LE



Interface

Switching output PNP normally closed (NC)

Material

Housing material Stainless steel  
Material jacket PUR  
Material sensing surface Ceramic

Range/Distance

Assured operating distance Sa 0.65 mm  
Hysteresis H max. (% of Sr) 15.0 %  
Rated operating distance Sn 0.8 mm  
Real switching distance sr 0.8 mm  
Repeat accuracy max. (% of Sr) 5.0 %  
Temperature drift max. (% of Sr) 10 %  
Tolerance Sr -10 %/+40 %

Mechanical data

Dimension Ø 5 x 27 mm  
Installation for flush mounting  
Mounting length 24.00 mm  
Pressure rating max. 100 bar  
Pressure rating, note oil pressure rated  
Sealing ring, size 10.4 x 3.5 mm  
Size M5x0.5  
Tightening torque 1 Nm ±10 %

Remarks

Installation Instructions 868058  
The sensor is functional again after the overload has been eliminated.  
For more information about MTTF and B10d see MTTF / B10d Certificate

Indication of the MTTF- / B10d value does not represent a binding composition and/or life expectancy assurance; these are simply experiential values with no warranty implications. These declared values also do not extend the expiration period for defect claims or affect it in any way.

Connector Drawings



Wiring Diagrams

