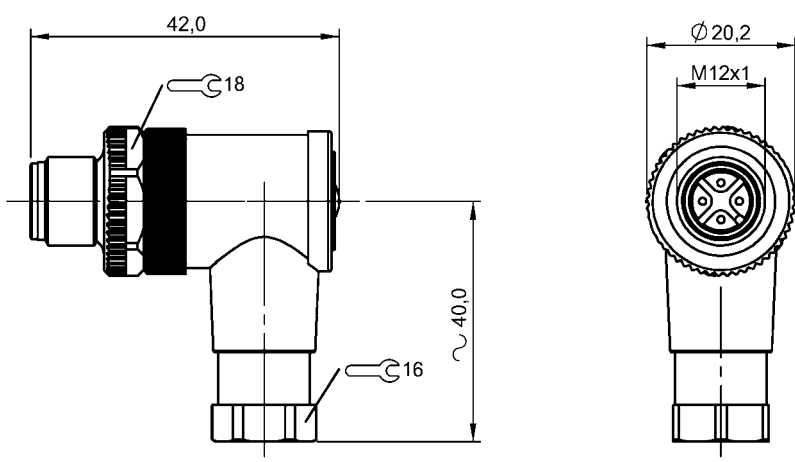


Field-Attachable Connectors  
BCC M444-0000-2A-000-41X475-000  
Order Code: BCC06ZC



Basic features

Approval/Conformity	CE cURus WEEE
---------------------	---------------------

Electrical connection

Cable diameter D	4...6 mm
Connection	M12x1-Male, angled, 4-pin, A-coded
Number of connectable contacts	4
System	Can be fabricated

Electrical data

Operating voltage Ub	250 VDC / 250 VAC
Rated current (40 °C)	4.0 A

Environmental conditions

Ambient temperature	-40...85 °C
IP rating	IP67

Material

Material contact carrier	PA
Material contacts	Brass
Material cover nut	Die-cast zinc
Material grip	PA

Mechanical data

Connection cross-section	0.14...0.75 mm <sup>2</sup>
Tightening torque pigtail	0.6 Nm
Type of wire mounting	Screw terminals

Remarks

Enclosure rating per IEC 60529, only in screwed state with the associated mating piece.

Connector Drawings

