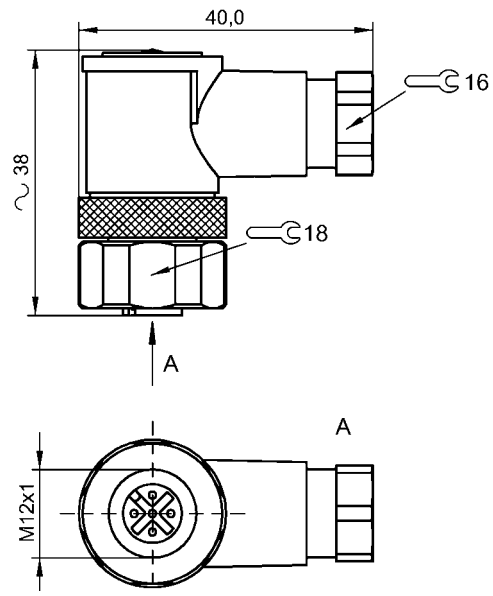


Field-Attachable Connectors  
BCC S445-0000-1A-000-51X575-000  
Order Code: BCC097U



Basic features

|                     |                      |
|---------------------|----------------------|
| Approval/Conformity | CE<br>Ecolab<br>WEEE |
|---------------------|----------------------|

Electrical connection

|                                |                                      |
|--------------------------------|--------------------------------------|
| Cable diameter D               | 6...8 mm                             |
| Connection                     | M12x1-Female, angled, 5-pin, A-coded |
| Number of connectable contacts | 5                                    |
| System                         | Can be fabricated                    |

Electrical data

|                       |                   |
|-----------------------|-------------------|
| Operating voltage Ub  | 125 VDC / 125 VAC |
| Rated current (40 °C) | 4.0 A             |

Environmental conditions

|                     |             |
|---------------------|-------------|
| Ambient temperature | -40...85 °C |
| IP rating           | IP67        |

Material

|                          |                        |
|--------------------------|------------------------|
| Material contact carrier | PA                     |
| Material contacts        | Brass                  |
| Material cover nut       | 1.4404 stainless steel |
| Material grip            | PBT                    |

Mechanical data

|                           |                             |
|---------------------------|-----------------------------|
| Connection cross-section  | 0.14...0.75 mm <sup>2</sup> |
| Tightening torque pigtail | 0.6 Nm                      |
| Type of wire mounting     | Screw terminals             |

Remarks

Enclosure rating per IEC 60529, only in screwed state with the associated mating piece.

Connector Drawings

