

Basic features

| | |
|---------------------|------|
| Approval/Conformity | WEEE |
|---------------------|------|

Electrical connection

| | |
|-----------------------|----------|
| Connector 01, version | straight |
| Number of pins | 5 |
| System | Molded |

Electrical data

| | |
|-------------------------|--------|
| Operating voltage U_b | 24 VAC |
| Rated current (40 °C) | 4.0 A |

Environmental conditions

| | |
|---------------------|-------------|
| Ambient temperature | -40...90 °C |
| IP rating | IP68 |

Material

| | |
|--------------------------|---------------|
| Material contact carrier | PUR |
| Material contacts | Brass |
| Material cover nut | Die-cast zinc |
| Material grip | PUR |

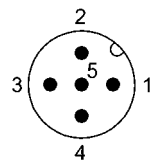
Mechanical data

| | |
|---------------------------|--------|
| Tightening torque pigtail | 0.6 Nm |
|---------------------------|--------|

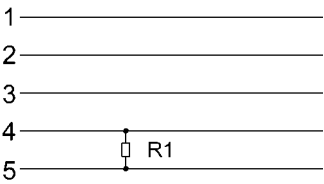
Remarks

Enclosure rating per IEC 60529, only in screwed state with the associated mating piece.

Connector Drawings



Wiring Diagrams



R1 = 121 Ω