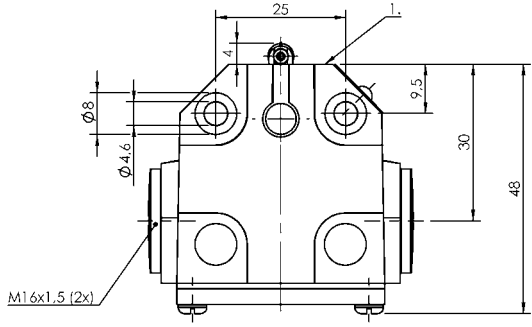
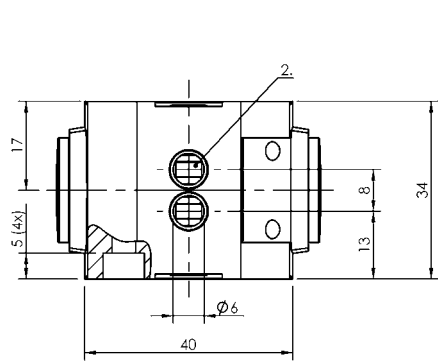
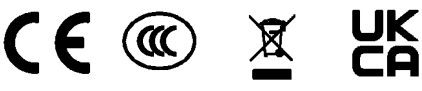


Mechanical Cam Switches
BNS 819-B02-R08-40-15
Order Code: BNS045F



1) Reference edge, 2) 1st pos.



Basic features

Additional features	high temperature rated
Approval/Conformity	CE UKCA CCC WEEE
Basic standard	IEC 60947-5-1
Operating principle	1-2. Switch position: Mechanical
Version	Snap contact

Functional safety

B10d (EN ISO 13849-1)	BSE 79: 10 mil. switching cycles
-----------------------	----------------------------------

Material

Housing material	Aluminium, Anodized
Housing material, surface protection	Anodized
Material contacts	1-2. Switch position: Silver
Plunger material	1-2. Switch position: 1.4034 stainless steel

Display/Operation

Function indicator	1-2. Switch position: None
--------------------	----------------------------

Electrical connection

Connection type	1-2. Switch position: Solder connection
-----------------	---

Electrical data

Continuous current	1-2. Switch position: 5 A
Rated operating voltage Ue	1-2. Switch position: 250 V AC
Switching function mechanical	Single-pin changeover
Switching rate	1-2. Switch position: 200/min

Environmental conditions

Ambient temperature	-5...150 °C
IP rating	IP67

Mechanical data

Approach direction	longitudinal, parallel to attachment surface
Approach speed	1-2. Switch position: 60 m/min
Distance cam - reference edge	1-2. Switch position: 2.30...2.80 mm
Flange, feed-through	None
Installation	Vertical
Life expectancy mechanical	1-2. Switch position: 10 mil. switching operations
Number of switching positions	2x Roller Mechanical
Plunger style	1-2nd switch position: Roller
Switch actuation force	1-2. Switch position: 8 N
Switching element	1-2. Switch position: BSE 79

Range/Distance

Reproducibility	1-2. Switch position: ±0.05 mm
-----------------	--------------------------------

Remarks

Ambient temperature max.: 180 °C 10h/day

Indication of the MTTF- / B10d value does not represent a binding composition and/or life expectancy assurance; these are simply experiential values with no warranty implications. These declared values do not extend the limitation period for claims arising from defects or influence them in any other way.

We call your attention to the fact that the product listed here alone are not considered safety components according to Machine Directive 2006/42/EC Article 2c. It is however possible to construct structures per EN 13849-1 having a high performance level using the products with two channels.

Wiring Diagrams

