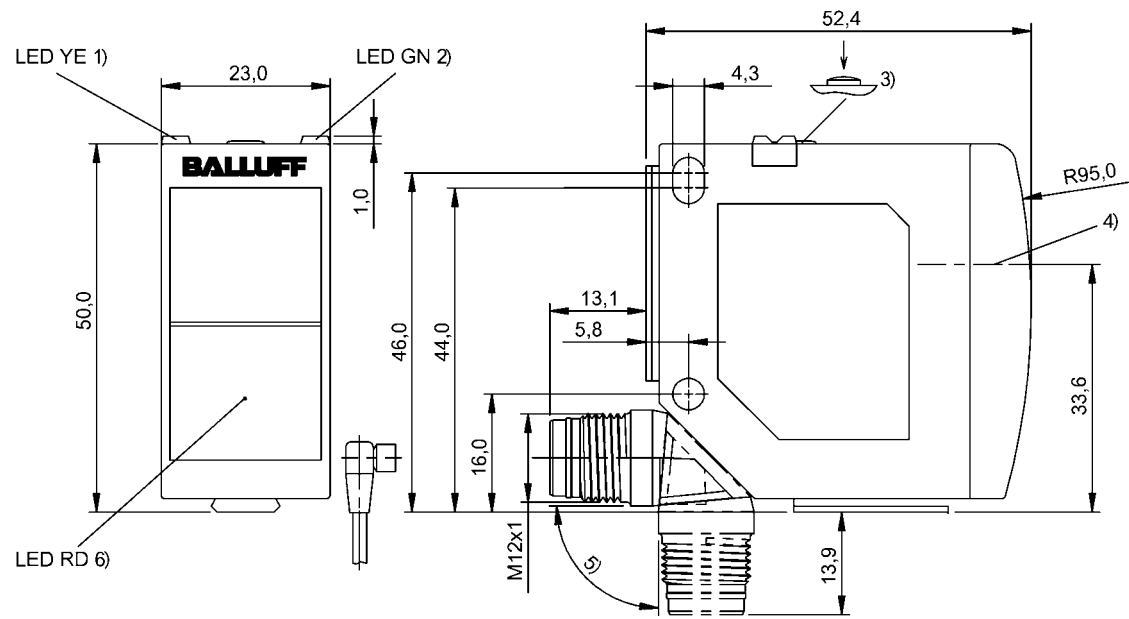


Photoelectric Sensors
BOS 23K-PA-LE10-S4
Order Code: BOS01FU



1) Output function/Error, 2) Power/setting mode, 3) Sn, light/dark, 4) Optical axis, 5) rotatable 270°, 6) Alignment good/limit area



Basic features

Approval/Conformity	Ecolab CE cULus WEEE
Basic standard	IEC 60947-5-2
Principle of operation	Photoelectric sensor
Reference emitter	BOS 23K-XT-LS11-S4
Series	23K
Style	Square Connection can be rotated

Display/Operation

Adjuster	button
Display	Output function- LED yellow Orientation good - LED red LED green: Power Teach - LED yellow+green, alt. Setting NO/NC - LED green, flashing Error - LED yellow, flashing Limit range - LED red, flashing
Setting	Rated switching distance (Sn) Light-on/dark-on

Electrical connection

Connection	Connector, M12x1-Male, 4-pin
Polarity reversal protected	yes
Protection against device mix-ups	yes
Short-circuit protection	yes

Photoelectric Sensors
BOS 23K-PA-LE10-S4
Order Code: BOS01FU



Electrical data

Input function	Same function as button Key disable on/off
No-load current I _o max. at U _e	30 mA
Operating voltage U _b	10...30 VDC
Protection class	II
Rated insulation voltage U _i	75 V DC
Rated operating current I _e	100 mA
Rated operating voltage U _e DC	24 V
Ready delay t _v max.	300 ms
Residual current I _r max.	50 µA
Ripple max. (% of U _e)	10 %
Switching frequency	3500 Hz
Turn-off delay t _{off} max.	0.15 ms
Turn-on delay t _{on} max.	0.15 ms
Utilization category	DC -13
Voltage drop U _d max. at I _e	2 V

Environmental conditions

Ambient temperature	-20...60 °C
EN 60068-2-27, Shock	Half-sinus, 30 g _n , 11 ms, 3x6
EN 60068-2-6, Vibration	10...55 Hz, amplitude 0.5 mm, 3x30 min
IP rating	IP6x
IP rating per DIN 40050	IPx9K

Functional safety

MTTF (40 °C)	424 a
--------------	-------

Remarks

Do not press key using a pointed tool.
Order accessories separately.
For additional information, refer to user's guide.
Teach-in also possible when object is in motion.
Actuation object (target): gray card, 200 x 200, 90 % remission, lateral approach
The sensor is functional again after the overload has been eliminated.
For more information about MTTF and B10d see MTTF / B10d Certificate

Indication of the MTTF- / B10d value does not represent a binding composition and/or life expectancy assurance; these are simply experiential values with no warranty implications. These declared values also do not extend the expiration period for defect claims or affect it in any way.

Interface

Switching output	PNP normally closed (NC) PNP normally open (NO)
------------------	--

Material

Housing material	PC ABS
Material sensing surface	PMMA

Mechanical data

Dimension	23 x 51 x 52.4 mm
Mounting part	Screw M4
Tightening torque max.	1.5 Nm

Optical features

Ambient light max.	5000 Lux
Light type	Laser red light
Principle of optical operation	Through-beam sensor (receiver)
Switching function, optical	dark-on/light-on Light/dark switching

Range/Distance

Range	0...30 m
Rated operating distance S _n	30 m Adjustable

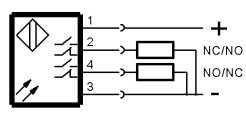
Connector Drawings



Photoelectric Sensors
BOS 23K-PA-LE10-S4
Order Code: BOS01FU



Wiring Diagrams



Opto Symbols

