

Basic features

Approval/Conformity	WEEE
---------------------	------

Electrical connection

Connector 01, version	straight
Number of pins	5
System	Molded

Electrical data

Operating voltage U_b	24 VAC
Rated current (40 °C)	4.0 A

Environmental conditions

Ambient temperature	-40...90 °C
IP rating	IP68

Material

Material contact carrier	PUR
Material contacts	Bronze
Material cover nut	Die-cast zinc
Material grip	PUR

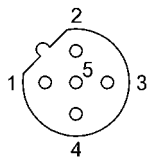
Mechanical data

Tightening torque pigtail	0.6 Nm
---------------------------	--------

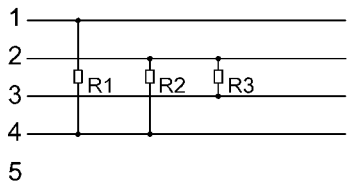
Remarks

Enclosure rating per IEC 60529, only in screwed state with the associated mating piece.

Connector Drawings



Wiring Diagrams



R1=390Ω
R2=220Ω
R3=390Ω