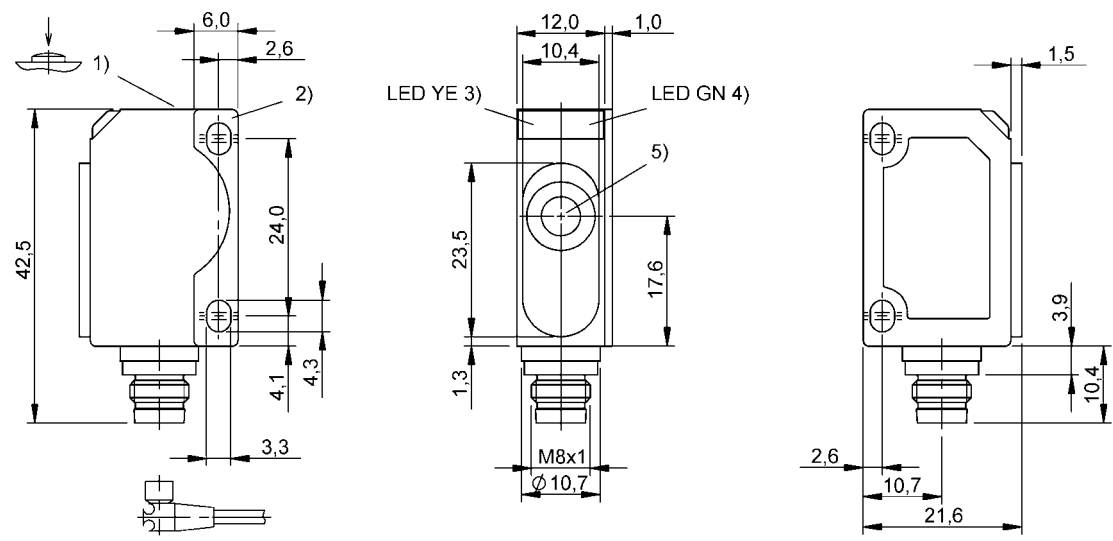


Ultrasonic Sensors
BUS R06K1-PPX-02/007-S75G
Order Code: BUS0021

BALLUFF



1) Set sensor, 2) Mounting plate, 3) Status indicator, 4) Operating voltage/mode, 5) Ultrasonic transducer axis



Basic features

Application	Object detection
Approval/Conformity	CE WEEE UKCA
Operating mode	Refl.light scanner (window) Reflectionlight scanner (switching point) Retro-reflector
Series	R06K1

Electrical data

Current draw max.	30 mA
Hysteresis H max.	2 mm
Input function	Synchronization signal
Operating voltage Ub	20...30 VDC
Output current max.	200 mA
Rated operating voltage Ue DC	24 V
Switching frequency	250 Hz
Synchronization	external, any number of sensors
Ultrasonic Frequency	380 kHz

Display/Operation

Adjuster	button
Display	Output function- LED yellow Mode - LED green, flashing LED green: Power Switch.function - LED green flashing
Setting	Factory setting (Reset) Key disable on/off Normally open/Normally closed Switching distance, 2 values Operating mode

Environmental conditions

Ambient temperature	-25...70 °C
IP rating	IP67
Storage temperature	-40...85 °C

Functional safety

MTTF (40 °C)	1657 a
--------------	--------

Interface

Switching output	PNP normally open/normally closed (NO/NC)
------------------	---

Electrical connection

Connection	M8x1-Male, 4-pin
Polarity reversal protected	yes
Short-circuit protection	yes

Material

Housing material	ABS
Material sensing surface	PU foam/Epoxy resin/Glass

Mechanical data

Dimension	12 x 42.5 x 21.6 mm
Mounting part	Screw M3

Range/Distance

Measuring range	20...100 mm
Rated operating distance Sn	70 mm
Repeat accuracy	± 0.15 %FS
Resolution	≤ 0.056 mm

Remarks

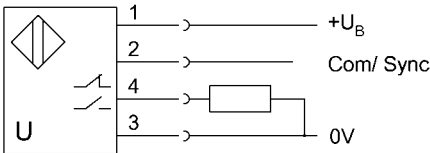
For additional information, refer to user's guide.
Order accessories separately.
Do not press key using a pointed tool.
Reference object for Sn: tube ø10mm. Max. range refers to the aligned plate.
The sensor is functional again after the overload has been eliminated.
For more information about MTTF and B10d see MTTF / B10d Certificate

Indication of the MTTF- / B10d value does not represent a binding composition and/or life expectancy assurance; these are simply experiential values with no warranty implications. These declared values also do not extend the expiration period for defect claims or affect it in any way.

Connector Drawings



Wiring Diagrams



Ultrasonic Sensors
BUS R06K1-PPX-02/007-S75G
Order Code: BUS0021



Technical Drawings

