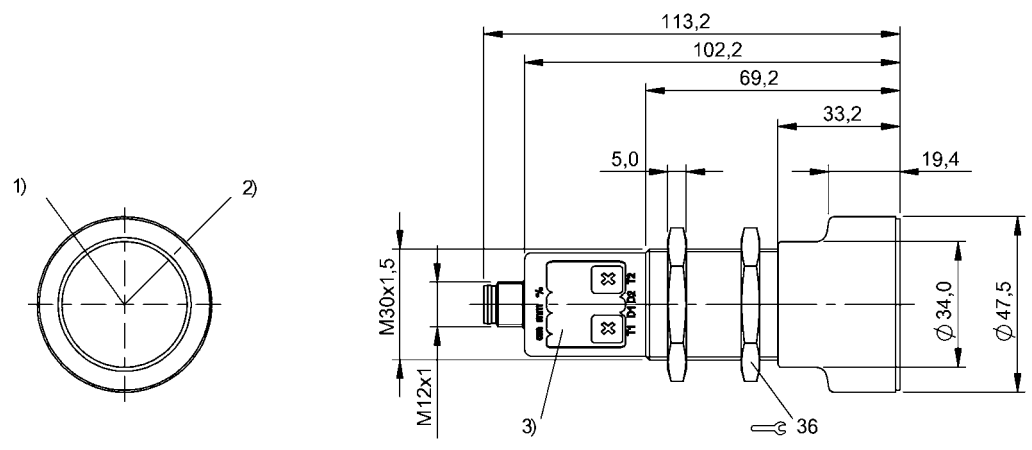


Ultrasonic Sensors  
BUS M30M1-NPX-35/340-S92K  
Order Code: BUS003J



1) Ultrasonic transducer axis, 2) Exit direction 90° connector, 3) Display and control panel



Basic features

Application	Object detection
Approval/Conformity	cULus CE WEEE UKCA
Operating mode	Reflectionlight scanner (switching point) Refl.light scanner (window) Retro-reflector
Series	M30M1

Display/Operation

Adjuster	Key (2x)
Display	Distance value - segment display Output function- LED yellow LED green: Power Sensor settings - segment display
Setting	Measured value filter Multiplex speed Synchronization on/off Synchronous/Multiplex mode Segment displ. bright/dark/off Filter strength (10 levels) Response delay 0 to 20 s Foreground suppression range Multiplex sensor address Sensor calibration Temperature comp. on/off Hysteresis Detection range (3 levels) Teach-in mode display/button Factory setting (Reset) Key disable on/off Normally open/Normally closed Switching distance, 2 values Operating mode

Electrical connection

Connection	M12x1-Male
Polarity reversal protected	yes
Short-circuit protection	yes

Ultrasonic Sensors  
**BUS M30M1-NPX-35/340-S92K**  
Order Code: BUS003J

**BALLUFF**

#### Electrical data

Current draw max.	80 mA
Hysteresis H max.	50 mm
Input function	Synchronization signal
Operating voltage Ub	9...30 VDC
Output current max.	200 mA
Rated operating voltage Ue DC	24 V
Switching frequency	4 Hz
Synchronization	internal, max. 10 sensors
Ultrasonic Frequency	120 kHz

#### Environmental conditions

Ambient temperature	-25...70 °C
IP rating	IP67
Storage temperature	-40...85 °C

#### Functional safety

MTTF (40 °C)	1483 a
--------------	--------

#### Interface

Switching output	NPN normally open/normally closed (NO/NC)
------------------	---

#### Material

Housing material	Brass, nickel-plated PBT, TPU
Material sensing surface	PU foam/Epoxy resin/Glass
Surface protection	nickel-plated

#### Mechanical data

Mounting part	Nut M30x1.5
---------------	-------------

#### Range/Distance

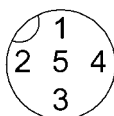
Measuring range	350...5000 mm
Rated operating distance Sn	3400 mm
Repeat accuracy	± 0.15 %FS
Resolution	≤ 0.180 mm

#### Remarks

The sensor is functional again after the overload has been eliminated.  
Reference object for Sn: tube ø27mm. Max. range refers to the aligned plate.  
Do not press key using a pointed tool.  
Order accessories separately.  
For additional information, refer to user's guide.  
For more information about MTTF and B10d see MTTF / B10d Certificate

Indication of the MTTF- / B10d value does not represent a binding composition and/or life expectancy assurance; these are simply experiential values with no warranty implications. These declared values also do not extend the expiration period for defect claims or affect it in any way.

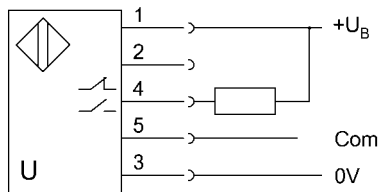
#### Connector Drawings



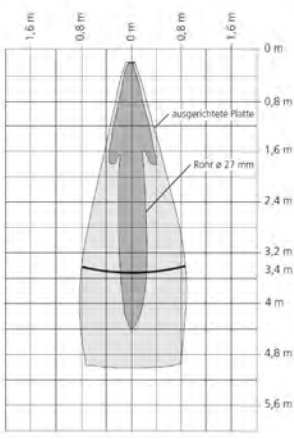
Ultrasonic Sensors  
BUS M30M1-NPX-35/340-S92K  
Order Code: BUS003J



Wiring Diagrams



Technical Drawings



Help Views

