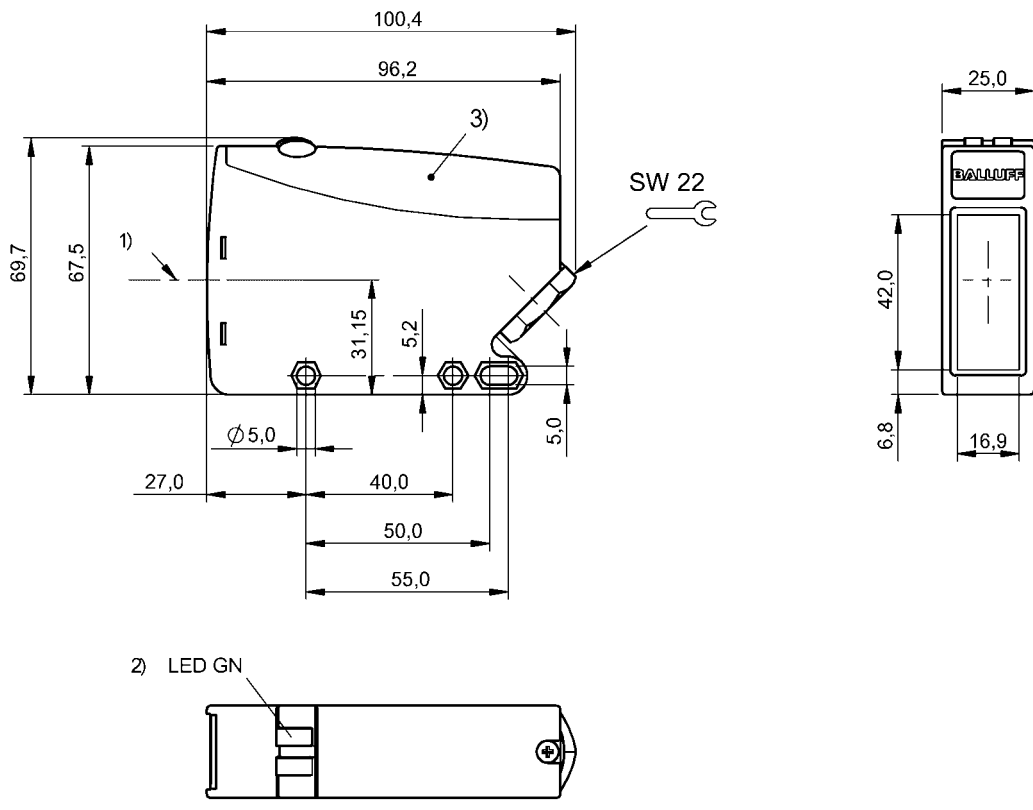


Photoelectric Sensors  
BOS 64K-AA-IS10-TG  
Order Code: BOS01K5



1) Optical axis, 2) Operating voltage, 3) Removable cover



Basic features

Approval/Conformity	CE UKCA cULus WEEE
Basic standard	IEC 60947-5-2
Principle of operation	Photoelectric sensor
Reference receiver	BOS 64K-AA-IE10-TG
Series	64K
Style	Square Connection 45°

Display/Operation

Display	LED green: Power
---------	------------------

Electrical connection

Cable diameter D	8...10 mm
Connection	Screw terminals
Polarity reversal protected	yes
Protection against device mix-ups	yes

Electrical data

Operating voltage $U_b$	24...60 VDC/24...240 VAC
Protection class	II
Rated insulation voltage $U_i$	250 V AC
Rated operating voltage $U_e$ AC	230 V
Rated operating voltage $U_e$ DC	24 V
Ripple max. (% of $U_e$ )	10 %

Environmental conditions

Ambient temperature	-25...55 °C
EN 60068-2-27, Shock	Half-sinus, 30 g <sub>n</sub> , 11 ms, 3x6
EN 60068-2-6, Vibration	10...55 Hz, amplitude 0.5 mm, 3x30 min
IP rating	IP67

Functional safety

MTTF (40 °C)	367 a
--------------	-------

Material

Housing material	PBT, GF30
Material sensing surface	PC

Mechanical data

Dimension	25 x 69.7 x 100.4 mm
Mounting part	Screw M4
Tightening torque max.	1.2 Nm

Optical features

Beam characteristic	Divergent
LED group per IEC 62471	Exempt Group
Light type	Infrared
Principle of optical operation	Through-beam sensor (Emitter)
Wave length	880 nm

Range/Distance

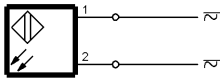
Range	0...50 m
Rated operating distance Sn	50 m, Adjustable

Remarks

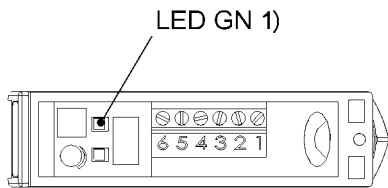
For additional information, refer to user's guide.  
Order accessories separately.  
For more information about MTTF and B10d see MTTF / B10d Certificate

Indication of the MTTF- / B10d value does not represent a binding composition and/or life expectancy assurance; these are simply experiential values with no warranty implications. These declared values also do not extend the expiration period for defect claims or affect it in any way.

Wiring Diagrams



Help Views



1) Operating voltage

Opto Symbols

