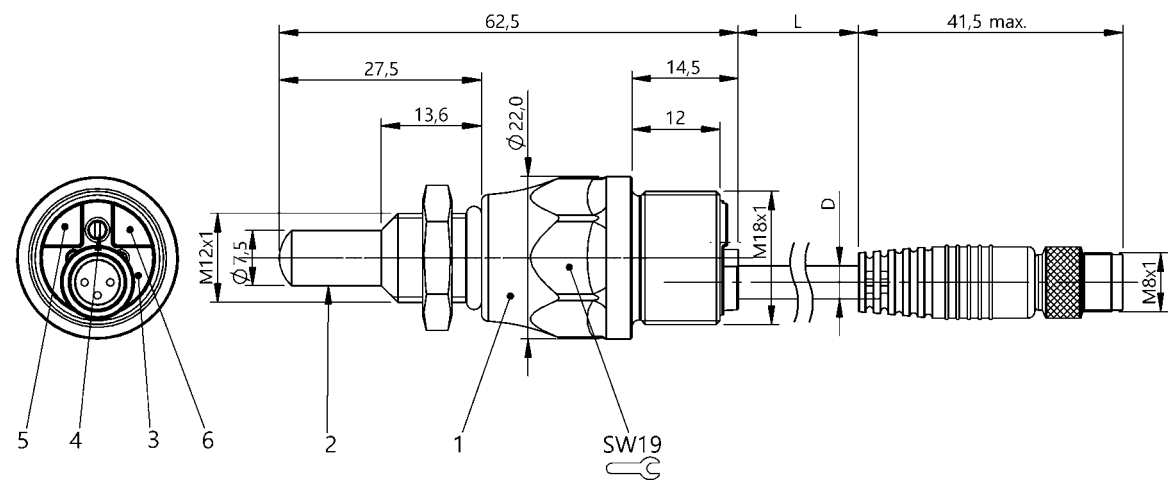


Capacitive Sensors  
BCS S44KK01-PSCFNG-EP00,3-GS49  
Order Code: BCS00ZL



1) Housing, 2) Sensing surface, 3) Cover, 4) Potentiometer, 5) Function indicator yellow, 6) Power indicator green



### Basic features

Approval/Conformity	CE UKCA WEEE
Basic standard	IEC 60947-5-2
Scope of delivery	Nut + O-ring Ø10x2
Sensitivity	media-dependent, adjustable
Series	S44

### Display/Operation

Function indicator	yes
Power indicator	yes

### Electrical connection

Cable diameter D	4.70 mm
Cable length L	0.3 m
Connection	M8x1-Male, 3-pin
Polarity reversal protected	yes
Protection against device mix-ups	yes
Short-circuit protection	yes

### Electrical data

Load capacitance max. at U <sub>e</sub>	10 µF
No-load current I <sub>o</sub> max. at U <sub>e</sub>	11 mA
Operating voltage U <sub>b</sub>	10...30 VDC
Rated insulation voltage U <sub>i</sub>	75 V DC
Rated operating current I <sub>e</sub>	50 mA
Rated operating voltage U <sub>e</sub> DC	24 V
Ready delay t <sub>v</sub> max.	100 ms
Ripple max. (% of U <sub>e</sub> )	10 %
Switching frequency	10 Hz
Utilization category	DC -13
Voltage drop static max.	2 V

### Environmental conditions

Ambient temperature	-5...105 °C
Contamination scale	3
IP rating	IP67, sensing surface: IP68 10 bar

### Functional safety

MTTF (40 °C)	250 a
--------------	-------

### Interface

Switching output	PNP normally open (NO)
------------------	------------------------

Capacitive Sensors  
BCS S44KK01-PSCFNG-EP00,3-GS49  
Order Code: BCS00ZL

**BALLUFF**

#### Material

Cover material	PA
Housing material	PEEK
Material jacket	PUR
Material sensing surface	PEEK

#### Mechanical data

Dimension	Ø 12 x 62.5 mm
Installation	non-flush
Size	M12x1
Thread (A)	M12x1
Tightening torque	1.5 Nm

#### Remarks

The push-pull switching outputs must not be connected in parallel.

The potentiometer does not have a fixed stop, but can be turned endlessly without destroying anything.

If no change in the switching signal is detected, the potentiometer should be turned forwards or backwards until a signal change occurs at the output.

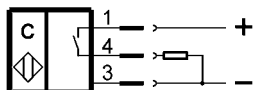
For more information about MTTF and B10d see MTTF / B10d Certificate

Indication of the MTTF- / B10d value does not represent a binding composition and/or life expectancy assurance; these are simply experiential values with no warranty implications. These declared values also do not extend the expiration period for defect claims or affect it in any way.

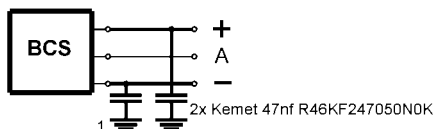
#### Connector Drawings



#### Wiring Diagrams



#### Installation remarks



1) Machine GND