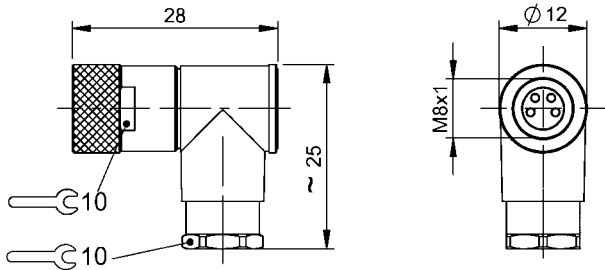


Field-Attachable Connectors  
BCC M344-0000-10-000-34X425-000  
Order Code: BCC0F9U



Basic features

Approval/Conformity	cULus WEEE
---------------------	---------------

Electrical connection

Cable diameter D	3.5...5 mm
Connection	M8x1-Female, angled, 4-pin, A-coded
Number of connectable contacts	4
System	Can be fabricated

Electrical data

Operating voltage $U_b$	30 VDC / 30 VAC
Rated current (40 °C)	4.0 A

Environmental conditions

Ambient temperature	-40...85 °C
IP rating	IP67

Material

Material contact carrier	PA
Material contacts	Bronze
Material cover nut	Brass
Material grip	PBT

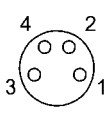
Mechanical data

Connection cross-section	0.14...0.25 mm <sup>2</sup>
Tightening torque pigtail	0.4 Nm
Type of wire mounting	Solder connections

Remarks

Enclosure rating per IEC 60529, only in screwed state with the associated mating piece.

Connector Drawings



PIN 1-4 usable