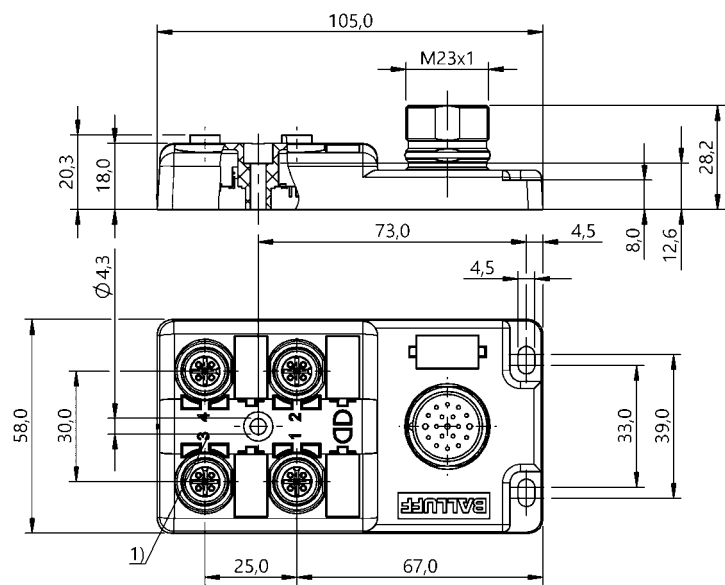


Junction blocks  
BPI 4M4A50-2K-B0-SM6LT  
Order Code: BPI00JJ



1) Slot numbering



Basic features

Approval/Conformity	CE UKCA cULus WEEE
Scope of delivery	Part labels (24x) Cover cap (2x)

Electrical connection

Connection slots	4x M12x1-Female, 5-pin
------------------	------------------------

Electrical data

Isolation resistance	$\geq 10 \text{ G}\Omega$
Operating voltage $U_b$	10...60 VDC/10...60 VAC
Output current max.	4 A
Rated operating voltage $U_e$ DC	24 V
Total current max.	8 A

Environmental conditions

Ambient temperature	-25...80 °C
IP rating	IP67, when threaded in

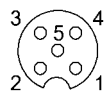
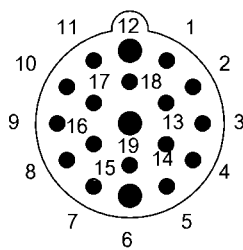
Material

Housing material	PBT, GF
Material contact carrier	PBT
Material contacts	Bronze (CuSn6), nickel layer

Mechanical data

Casting	yes
Dimension	105 x 58 x 28.5 mm
Mounting part	M4 (3x)
Tightening torque	1.2 Nm $\pm$ 0.2 (M4)
Tightening torque pigtail	0.6 Nm + 0.1 Nm (M12 connector)

## Connector Drawings



PIN 1: +24V  
 PIN 2: Signal 2  
 PIN 3: 0V  
 PIN 4: Signal 1  
 PIN 5: PE

## Wiring Diagrams

