

- 1) Housing, 2) Sensing surface, 3) Cover, 4) Potentiometer, 5) Function indicator yellow, 6) Power indicator green



Basic features

Additional features	Electrically conductive media Foam and residue compensation
Approval/Conformity	CE UKCA WEEE
Basic standard	IEC 60947-5-2
Scope of delivery	Nut + O-ring Ø10x2
Sensitivity	media-dependent, adjustable
Series	S44

Display/Operation

Function indicator	yes
Power indicator	yes

Electrical connection

Cable diameter D	4.70 mm
Cable length L	0.05 m
Conductor cross-section	0.34 mm ²
Connection	M8x1-Male, 3-pin
Number of conductors	3
Polarity reversal protected	yes
Protection against device mix-ups	yes
Short-circuit protection	yes

Electrical data

Load capacitance max. at Ue	10 μ F
No-load current Io max. at Ue	11.0 mA
Operating voltage Ub	10...30 VDC
Rated insulation voltage Ui	75 V DC
Rated operating current Ie	50 mA
Rated operating voltage Ue DC	24 V
Ready delay tv max.	100 ms
Ripple max. (% of Ue)	10 %
Switching frequency	10 Hz
Utilization category	DC-13
Voltage drop static max.	2 V

Environmental conditions

Ambient temperature	-5...105 °C
Contamination scale	3
IP rating	IP67, sensing surface: IP68 10 bar

Functional safety

MTTF (40 °C) 250 a

Interface

Switching output PNP/NPN NO/NC codable

Capacitive Sensors
BCS S44KK01-GPCFNG-EP00,05-GS49
Order Code: BCS015K



Material

Cover material	PA
Housing material	PEEK
Material jacket	PUR
Material sensing surface	PEEK

Mechanical data

Dimension	Ø 12 x 62.5 mm
Installation	non-flush
Size	M12x1
Thread (A)	M12x1
Tightening torque	1.5 Nm

Remarks

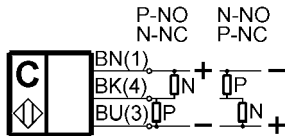
The push-pull switching outputs must not be connected in parallel.
The potentiometer does not have a fixed stop, but can be turned endlessly without destroying anything.
If no change in the switching signal is detected, the potentiometer should be turned forwards or backwards until a signal change occurs at the output.
For more information about MTTF and B10d see MTTF / B10d Certificate

Indication of the MTTF- / B10d value does not represent a binding composition and/or life expectancy assurance; these are simply experiential values with no warranty implications. These declared values also do not extend the expiration period for defect claims or affect it in any way.

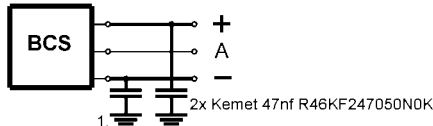
Connector Drawings



Wiring Diagrams



Installation remarks



1) Machine GND