

Electrical data

Current draw max.	60 mA
Hysteresis H max.	100 mm
Operating voltage Ub	9...30 VDC
Output current max.	200 mA
Rated operating voltage Ue DC	24 V
Switching frequency	3 Hz
Synchronization	internal, max. 10 sensors
Ultrasonic Frequency	80 kHz

Environmental conditions

Ambient temperature	-25...70 °C
IP rating	IP67
Storage temperature	-40...85 °C

Display/Operation

Adjuster	Key (2x)
Display	2x tricoloured - LED

Electrical connection

Connection	M12x1-Male, 5-pin
Polarity reversal protected	yes
Short-circuit protection	yes

Functional safety

MTTF (40 °C) 389 a

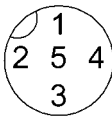
Interface		Mechanical data	
Switching output	2x PNP normally open/normally closed (NO/NC)	Dimension	62.2 x 62.2 x 32.7 mm
		Mounting part	4-hole screw mount Screws M8
Material		Range/Distance	
Housing material	PBT	Measuring range	600...8000 mm
Material sensing surface	PU foam/Epoxy resin/Glass	Rated operating distance Sn	6000 mm
		Repeat accuracy	± 0.15 %FS
		Resolution	≤ 0.180 mm

Remarks

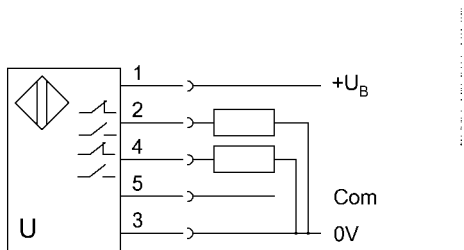
For additional information, refer to user's guide.
Order accessories separately.
Do not press key using a pointed tool.
Reference object for Sn: tube ø27mm. Max. range refers to the aligned plate.
The sensor is functional again after the overload has been eliminated.
For more information about MTTF and B10d see MTTF / B10d Certificate

Indication of the MTTF- / B10d value does not represent a binding composition and/or life expectancy assurance; these are simply experiential values with no warranty implications. These declared values also do not extend the expiration period for defect claims or affect it in any way.

Connector Drawings



Wiring Diagrams



Technical Drawings

