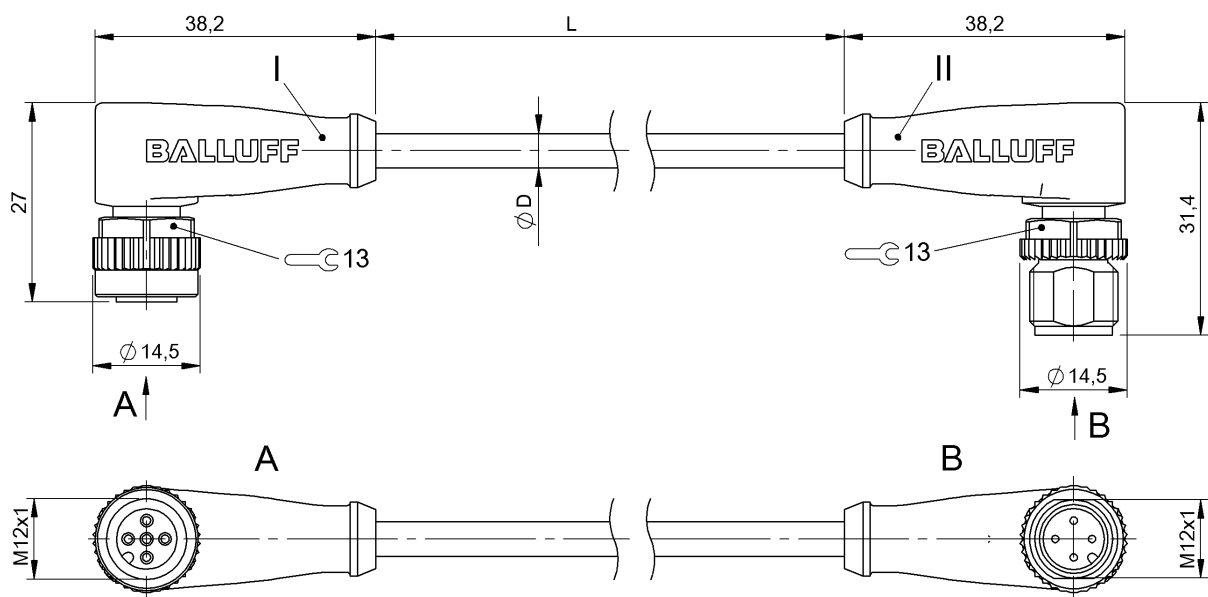


Double-Ended Cordsets
BCC M425-M424-3A-304-EX44T2-025
Order Code: BCC0K69



Basic features

| | |
|---------------------|---------------------|
| Approval/Conformity | CE cULus WEEE |
|---------------------|---------------------|

Electrical connection

| | |
|-------------------------------------|--|
| Bending radius min., fixed cable | 5 x D |
| Bending radius min., flexible cable | 10 x D |
| Cable | TPE Yellow, 2.5 m, drag chain compatible |
| Cable diameter D | 5.30 mm ±0.13 mm |
| Cable, bending cycles min. | 10 mil. |
| Conductor cross-section | 22 AWG |
| Connection 1 | M12x1-Female, angled, 5-pin, A-coded |
| Connection 2 | M12x1-Male, angled, 4-pin, A-coded |
| Number of conductors | 4 |
| System | Molded/Molded |

Electrical data

| | |
|-----------------------------|-------------------|
| Cable rated voltage AC max. | 300 V |
| Cable rated voltage DC max. | 300 V |
| Operating voltage Ub | 250 VDC / 250 VAC |
| Rated current (40 °C) | 4.0 A |

Remarks

Cable construction acc. to UL-AWM Style 20327
Flame resistance acc. to IEC 332-2
Enclosure rating per IEC 60529 or 20653, only in screwed state with the associated mating piece.

Environmental conditions

| | |
|-------------------------------------|-------------------------------------|
| Cable temperature, fixed routing | -50...105 °C |
| Cable temperature, flexible routing | -25...105 °C |
| IP rating | IP67, IP68, IP69K/IP67, IP68, IP69K |

Interface

| | |
|------------------|---------------|
| Switching output | Complementary |
|------------------|---------------|

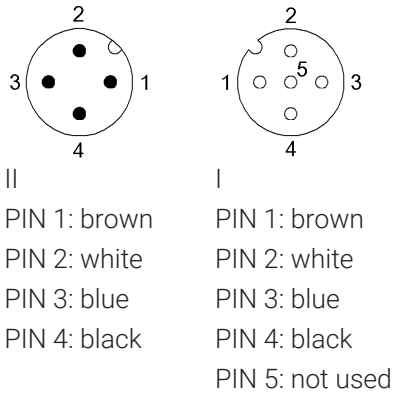
Material

| | |
|--------------------------|-----------------------------|
| Cable jacket, material | TPE |
| Material contact carrier | PUR/PUR |
| Material contacts | Bronze/Brass |
| Material cover nut | Die-cast zinc/Die-cast zinc |
| Material grip | PUR/PUR |

Mechanical data

| | |
|---------------------------|-----------------------|
| Cable jacket, color | Yellow |
| Cable length L | 2.50 m |
| Cable properties | drag chain compatible |
| Tightening torque pigtail | 0.6 Nm/0.6 Nm |

Connector Drawings



Wiring Diagrams

