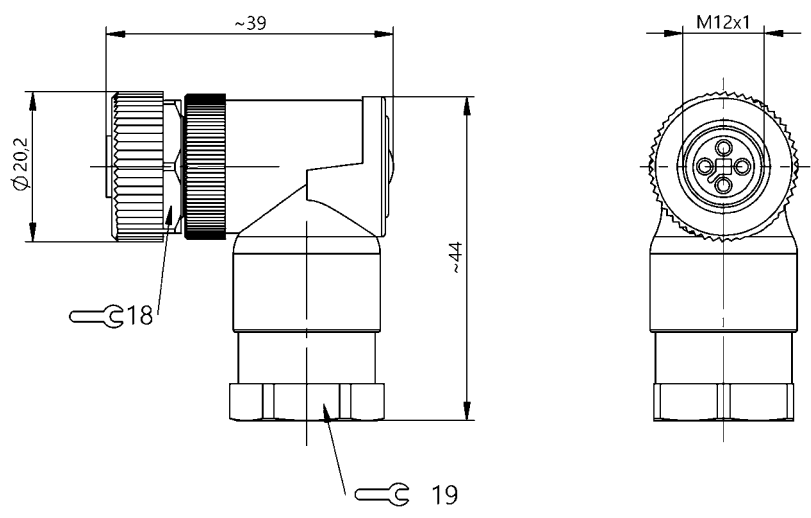


Field-Attachable Connectors
BCC M444-0000-1T-000-61X4A5-000
Order Code: BCC0K82



Basic features

Approval/Conformity	CE WEEE
---------------------	------------

Electrical connection

Cable diameter D	8...10 mm
Connection	M12x1-Female, angled, 4-pin, T-coded
Number of connectable contacts	4
System	Can be fabricated

Electrical data

Operating voltage U_b	63 VDC / 63 VAC
Rated current (40 °C)	12.0 A

Environmental conditions

Ambient temperature	-40...85 °C
IP rating	IP67

Material

Material contact carrier	PA
Material contacts	Brass
Material cover nut	Die-cast zinc
Material grip	PA

Mechanical data

Connection cross-section	1.50 mm ²
Type of wire mounting	Screw terminals

Remarks

Enclosure rating per IEC 60529, only in screwed state with the associated mating piece.

Connector Drawings

