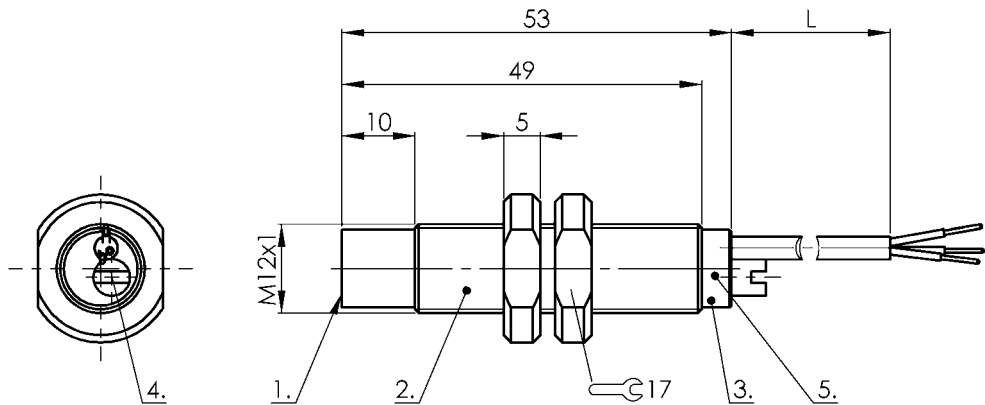


Capacitive Sensors
BCS M12TTG1-POM80G-ET02
Order Code: BCS0070



1) Sensing surface, 2) Housing, 3) Cover, 4) Potentiometer, 5) LED function indicator



Basic features

Approval/Conformity	CE UKCA cULus WEEE
Basic standard	IEC 60947-5-2
Scope of delivery	Nut (2x)
Sensitivity	Switching distance adjustable
Series	M12

Electrical connection

Cable length L	2 m
Conductor cross-section	0.20 mm²
Number of conductors	3
Polarity reversal protected	yes
Protection against device mix-ups	yes
Short-circuit protection	yes

Electrical data

Operating voltage U _b	12...35 VDC
Rated insulation voltage U _i	75 V DC
Rated operating current I _e	200 mA
Ripple max. (% of U _e)	10 %
Switching frequency	100 Hz
Utilization category	DC -13
Voltage drop static max.	0.8 V

Environmental conditions

Ambient temperature	-30...70 °C
IP rating	IP65

Functional safety

MTTF (40 °C)	450 a
--------------	-------

Interface

Switching output	PNP normally closed (NC)
------------------	--------------------------

Material

Cover material	PTFE
Housing material	PTFE
Material jacket	PTFE
Material sensing surface	PTFE

Mechanical data

Dimension	Ø 12 x 53 mm
Installation	non-flush
Size	M12x1
Thread (A)	M12x1
Tightening torque	0.5 Nm

Capacitive Sensors
BCS M12TTG1-POM80G-ET02
Order Code: BCS0070



Range/Distance

Hysteresis H max. (% of Sr)	15.0 %
Measuring range	1...8 mm

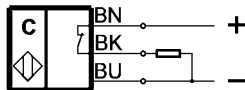
Rated operating distance Sn	8 mm
Repeat accuracy max. (% of Sr)	2.0 %
Temperature drift max. (% of Sr)	15 %

Remarks

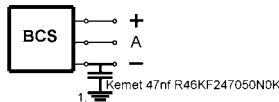
The potentiometer does not have a fixed stop, but can be turned endlessly without destroying anything.
If no change in the switching signal is detected, the potentiometer should be turned forwards or backwards until a signal change occurs at the output.
For more information about MTTF and B10d see MTTF / B10d Certificate

Indication of the MTTF- / B10d value does not represent a binding composition and/or life expectancy assurance; these are simply experiential values with no warranty implications. These declared values also do not extend the expiration period for defect claims or affect it in any way.

Wiring Diagrams



Installation remarks



1) Machine GND