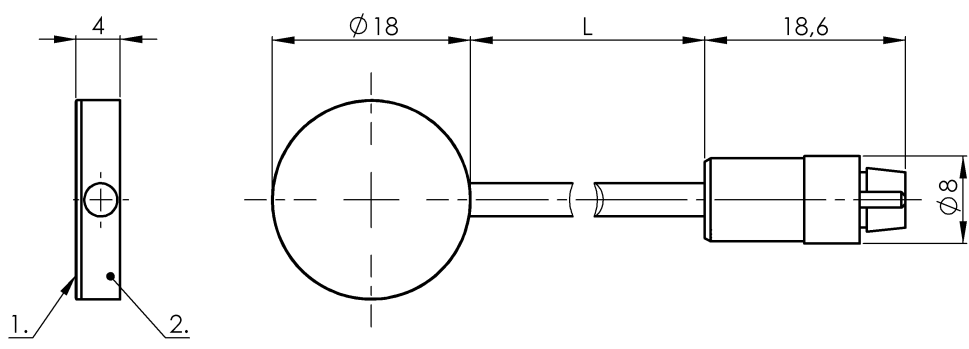


Capacitive Sensors  
BCS D18T404-XXS50C-EP02-GZ01-002  
Order Code: BCS001C

**BALLUFF**



1) Sensing surface, 2) Housing



Basic features

Approval/Conformity	CE UKCA cULus WEEE
Basic standard	IEC 60947-5-2
Scope of delivery	Nut (2x)
Sensitivity	adjustable on base unit
Series	D18

Electrical connection

Cable length L	2 m
Connection	Special connector-Special connector
Polarity reversal protected	not relevant
Short-circuit protection	not relevant

Electrical data

Operating voltage Ub	4...8 VDC
Rated insulation voltage Ui	75 V DC
Ripple max. (% of Ue)	10 %
Switching frequency	100 Hz
Utilization category	DC -13

Environmental conditions

Ambient temperature	-30...80 °C
IP rating	IP66

Functional safety

MTTF (40 °C)	1813 a
--------------	--------

Interface

Interface	Special interface
-----------	-------------------

Material

Cover material	POM
Housing material	1.4301 stainless steel
Material jacket	PUR
Material sensing surface	PTFE

Mechanical data

Dimension	Ø 18 x 4 mm
Installation	for flush mounting
Size	D18.0

Range/Distance

Hysteresis H max. (% of Sr)	15.0 %
Measuring range	1...5 mm
Rated operating distance Sn	5 mm
Repeat accuracy max. (% of Sr)	2 %
Temperature drift max. (% of Sr)	20 %

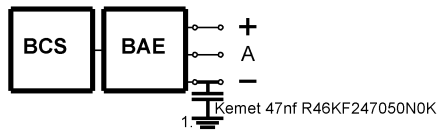
## Remarks

Required accessories, sensor amplifier BAE SA-...

For more information about MTTF and B10d see MTTF / B10d Certificate

Indication of the MTTF- / B10d value does not represent a binding composition and/or life expectancy assurance; these are simply experiential values with no warranty implications. These declared values also do not extend the expiration period for defect claims or affect it in any way.

## Installation remarks



1) Machine GND