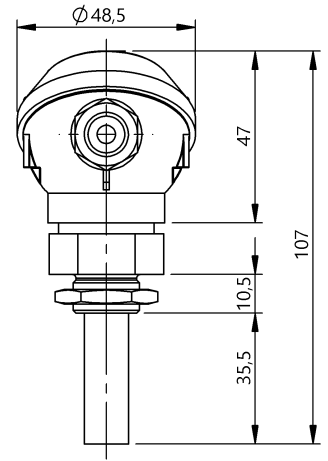
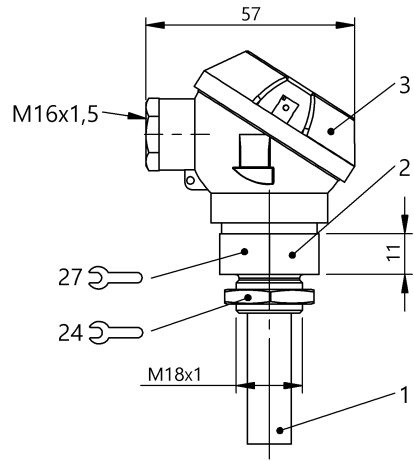


Capacitive Sensors  
BCS S01T401-NSCFNG-KM16-T02  
Order Code: BCS006K



1) Sensing surface, 2) Housing, 3) Cover



Basic features

Approval/Conformity	CE UKCA WEEE
Basic standard	IEC 60947-5-2
Scope of delivery	Nut Screwdriver
Sensitivity	media-dependent, adjustable
Series	S01

Display/Operation

Function indicator	yes
Power indicator	no

Electrical connection

Polarity reversal protected	yes
Protection against device mix-ups	yes
Short-circuit protection	yes

Electrical data

Load capacitance max. at Ue	10 µF
Operating voltage Ub	10...35 VDC
Protection class	II
Rated insulation voltage Ui	75 V DC
Rated operating current Ie	100 mA
Rated operating voltage Ue DC	24 V
Ready delay tv max.	300 ms
Residual current Ir max.	200 µA
Ripple max. (% of Ue)	10 %
Switching frequency	5 Hz
Utilization category	DC -13
Voltage drop static max.	2.7 V

Environmental conditions

Ambient temperature	-30...125 °C
Contamination scale	3
IP rating	IP67, sensing surface: IP68 10 bar

Functional safety

MTTF (40 °C)	873 a
--------------	-------

Interface

Switching output	NPN normally open (NO)
------------------	------------------------

Material

Cover material	Aluminium, Die casting
Housing material	1.4305 stainless steel
Material sensing surface	PTFE

Mechanical data

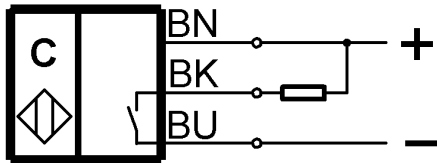
Dimension	54.8 x 48.5 x 106 mm
Installation	non-flush
Pressure rating max.	10 bar
Thread (A)	M18x1
Tightening torque	1.5 Nm

Remarks

The potentiometer does not have a fixed stop, but can be turned endlessly without destroying anything.  
If no change in the switching signal is detected, the potentiometer should be turned forwards or backwards until a signal change occurs at the output.  
For more information about MTTF and B10d see MTTF / B10d Certificate

Indication of the MTTF- / B10d value does not represent a binding composition and/or life expectancy assurance; these are simply experiential values with no warranty implications. These declared values also do not extend the expiration period for defect claims or affect it in any way.

Wiring Diagrams



Installation remarks

