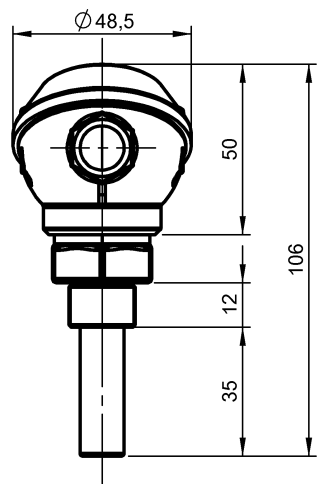
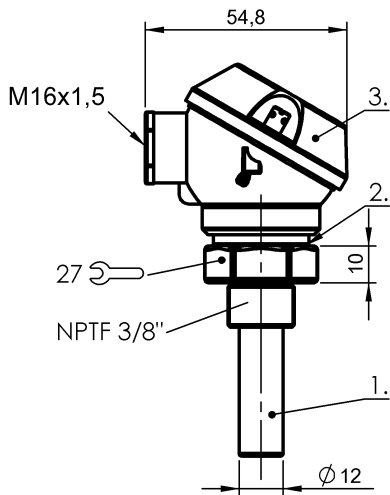


Capacitive Sensors
BCS S03T401-PSCFNH-KM16-T02
Order Code: BCS00A6



1) Sensing surface, 2) Housing, 3) Cover



Basic features

Approval/Conformity	CE UKCA WEEE
Basic standard	IEC 60947-5-2
Scope of delivery	Screwdriver Short guide
Sensitivity	media-dependent, adjustable
Series	S03

Display/Operation

Function indicator	yes
Power indicator	no

Electrical connection

Polarity reversal protected	yes
Protection against device mix-ups	yes
Short-circuit protection	yes

Electrical data

Load capacitance max. at Ue	10 µF
No-load current I _o max. at Ue	15 mA
Operating voltage U _b	10...35 VDC
Rated insulation voltage U _i	75 V DC
Rated operating current I _e	100 mA
Rated operating voltage U _e DC	24 V
Ready delay t _v max.	300 ms
Residual current I _r max.	200 µA
Ripple max. (% of U _e)	10 %
Switching frequency	5 Hz
Utilization category	DC -13
Voltage drop static max.	2.7 V

Environmental conditions

Ambient temperature	-30...125 °C
Contamination scale	2
IP rating	IP67, sensing surface: IP68 10 bar

Functional safety

MTTF (40 °C)	873 a
--------------	-------

Interface

Switching output	PNP normally open (NO)
------------------	------------------------

Capacitive Sensors
BCS S03T401-PSCFNH-KM16-T02
Order Code: BCS00A6



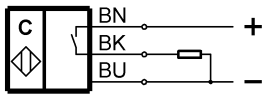
Material		Mechanical data	
Cover material	Aluminium, Die casting	Dimension	54.8 x 48.5 x 106 mm
Housing material	1.4305 stainless steel, Connection thread	Installation	non-flush
Material sensing surface	PTFE	Pressure rating max.	10 bar
		Thread (A)	3/8" NPTF
		Tightening torque	1.5 Nm

Remarks

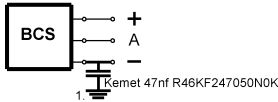
The potentiometer does not have a fixed stop, but can be turned endlessly without destroying anything.
If no change in the switching signal is detected, the potentiometer should be turned forwards or backwards until a signal change occurs at the output.
For more information about MTTF and B10d see MTTF / B10d Certificate

Indication of the MTTF- / B10d value does not represent a binding composition and/or life expectancy assurance; these are simply experiential values with no warranty implications. These declared values also do not extend the expiration period for defect claims or affect it in any way.

Wiring Diagrams



Installation remarks



1) Machine GND