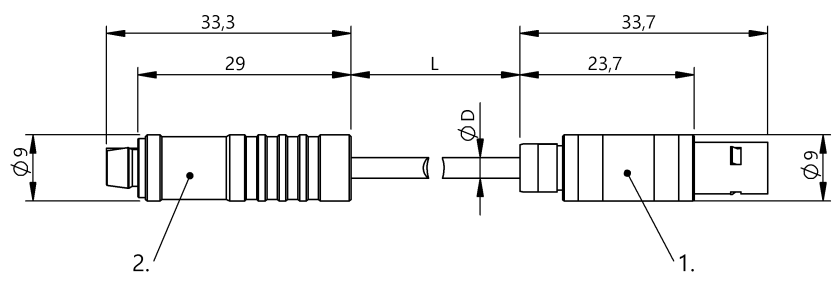


Double-Ended Cordsets  
BCC Z003-020  
Order Code: BCC04JW



1) Connection, 2) Connection



Basic features

Approval/Conformity	CE WEEE
Basic standard	IEC 60947-5-2

Display/Operation

Adjuster	via signal amplifier and UB
----------	-----------------------------

Electrical connection

Cable	FEP Red, 2 m
Cable diameter D	2.80 mm
Connection 1	Special connector-Male, straight
Connection 2	Special connector-Female, straight

Electrical data

No-load current I <sub>o</sub> max. at U <sub>e</sub>	2.2 mA
Operating voltage U <sub>b</sub>	4...8 VDC

Environmental conditions

Ambient temperature	-40...180 °C, Connector 1 -10...70 °C, Connector 2
IP rating	IP50, Connector 1 IP40, Connector 2

Material

Cable jacket, material	FEP
Material grip	Nickel-plated brass/PVC

Mechanical data

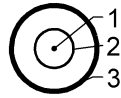
Cable jacket, color	Red
Cable length L	2.00 m

Remarks

For use with passive high-temperature BCS (e.g. BCS00A1 - ..A5) and signal amplifier (e.g. BAE00KH).  
Enclosure rating per IEC 60529, only in screwed state with the associated mating piece.  
The sensors are used as level indicators in liquids and bulk solids or as distance sensors for the detection of block materials in hot environments.  
The capacitive high-temperature sensors are particularly suitable for applications in which the sensor head is exposed to a high ambient temperature or comes into direct contact with hot materials.  
For more information about MTTF and B10d see MTTF / B10d Certificate

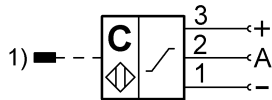
Indication of the MTTF- / B10d value does not represent a binding composition and/or life expectancy assurance; these are simply experiential values with no warranty implications. These declared values also do not extend the expiration period for defect claims or affect it in any way.

## Connector Drawings



- 1) active
- 2) Shield
- 3) GND

## Wiring Diagrams



- 1) Sensor head connection