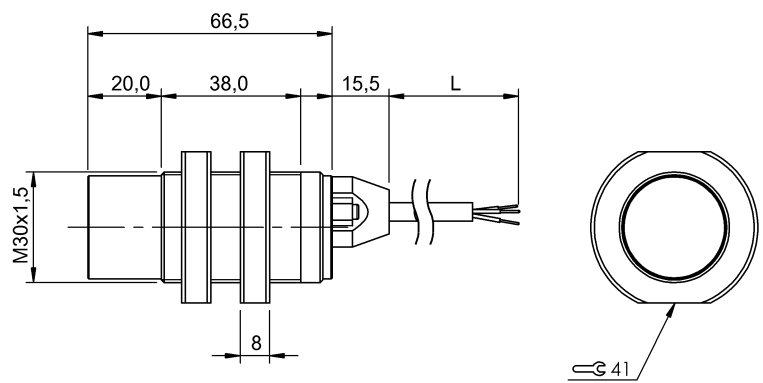


Capacitive Sensors
BCS M30TTM3-PSC30G-EP02
Order Code: BCS00F5



Basic features

Approval/Conformity	CE UKCA WEEE
Series	M30

Display/Operation

Function indicator	yes
Power indicator	yes

Electrical connection

Cable length L	2 m
Polarity reversal protected	yes
Short-circuit protection	yes

Electrical data

No-load current I _o max. at U _e	18.0 mA
Operating voltage U _b	10...35 VDC
Rated insulation voltage U _i	75 V DC
Rated operating current I _e	300 mA
Switching frequency	100 Hz
Utilization category	DC -13

Environmental conditions

Ambient temperature	-30...70 °C
---------------------	-------------

Functional safety

MTTF (40 °C)	455 a
--------------	-------

Material

Housing material	PBT PTFE
Material jacket	PUR
Material sensing surface	PTFE

Mechanical data

Dimension	Ø 30 x 82 mm
Installation	non-flush
Thread (A)	M30x1.5

Range/Distance

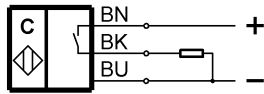
Hysteresis H max. (% of Sr)	15.0 %
Repeat accuracy max. (% of Sr)	5.0 %
Temperature drift max. (% of Sr)	15 % [-5...55 °C]

Remarks

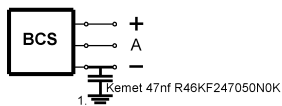
The potentiometer does not have a fixed stop, but can be turned endlessly without destroying anything.
If no change in the switching signal is detected, the potentiometer should be turned forwards or backwards until a signal change occurs at the output.
For more information about MTTF and B10d see MTTF / B10d Certificate

Indication of the MTTF- / B10d value does not represent a binding composition and/or life expectancy assurance; these are simply experiential values with no warranty implications. These declared values also do not extend the expiration period for defect claims or affect it in any way.

Wiring Diagrams



Installation remarks



1) Machine GND