

TECHNICAL INFORMATION

Pressure Compensation Element

DAE M12 Metall

Pressure Compensation Elements provide protection from particles, water, oils, and liquids while allowing pressure and temperature equalization of enclosures. This durable, threaded vent is easily integrated into existing equipment and can be used in a variety of applications including sensors, protective cases, lighting enclosures, appliances and general enclosures where protective venting is required.



TYPICAL APPLICATIONS

- Sensors
- Protective cases
- Lighting enclosures
- General enclosures
- Appliances
- Arena & events lighting
- Industrial lighting
- Electrical and communication junction boxes/outdoor enclosures

FEATURES & BENEFITS

Pressure Compensation Elements extend the life of the device and improve reliability because they:

- Prevent the passage of harmful particles and liquids into the device.
- Allow for constant pressure equalization during altitude and temperature fluctuations.

TYPICAL CONSTRUCTION

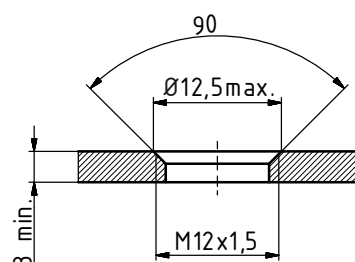
Pressure compensation elements are comprised of stainless steel that is resistant to chemicals, solvents, and high temperatures. They incorporate one of many different filter media choices that are puncture resistant and protected from moisture. The Pressure Compensation Element consists of a two-part housing, which encloses the filter medium safely.

PRODUCT OFFERINGS

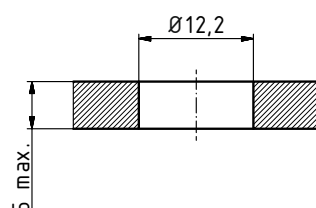
Part number	Model	Material	Color	O-ring	Typical Airflow (ml/min) @ 70 mbar	IP Rating* DIN EN 60529		
						66	68	69
52042505	DAE M12 Metall	stainless steel		Yes	265	✓	✓	✓

* All IP Rating tests were carried out under laboratory conditions with clear water (fresh water). Suitability in combination with other media must be checked by the user. IP 68 tests resistance to 2 meters of water for 60 minutes.

RECOMMENDED INTERNAL THREADS



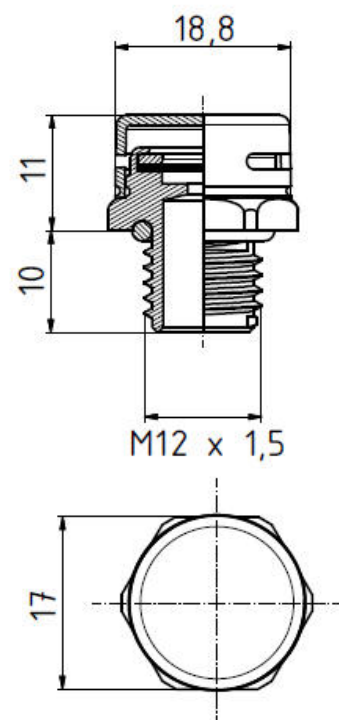
für Direkt-
montage/
for direct
assembly



für Montage
mit Gegen-
mutter/
for assembly
with counter
nut

SPECIFICATIONS

Description	
External thread length	M12 x 1.5
Thread length	10 mm
Total length	21 mm
Chamfer specifications for o-ring seal	
Ø 12,5 max.	Wall Thickness > 3mm M12 x 1,5
	Wall Thickness < 3 mm (Hex Nut mandatory)
Through hole (bulkhead mounting) installation	
Through Hole (± 0.2mm)	12.2
Hex Nut	13160100
Torques specification 50 Ncm	



TEST SPECIFICATIONS

- DIN 40050.9: Degree of Protection (IP-Code); Protection against water and dust
- ASTM B117-09: Salt Spray Resistance
- Temperature resistance: -40°C to +105°C

NOTICE

The venting element has no function if it is blocked with dust and / or submerged in water.

HANDLING & INSTALLATION GUIDELINES

- Clean mounting surface and area where screw vent will be installed to remove any contamination. Allow surface to dry after cleaning.
- Ideal location for installation is on a flat, vertical surface on an exterior housing wall. This location will prevent any liquids from collecting.
- Insert the screw vent into the housing with the threads aligned properly and screw into the housing.
- After ensuring that the vent is threaded properly, tighten the vent to 50 Ncm.
- Chamfer recommended for optimal O-Ring seal when wall thickness is suitable.