

VKA08F25

Connection technology • Data transfer

Data cable, connection cable, 10m, M12 connector 4-pin straight, D-coding, RJ45 connector 4-pin straight, 4x0.14mm², category 5E, -40-75°C, TPU, shielded



This shielded cable tail can be used to transmit complex information digitally into a network for further processing. The connections are pre-wired.

The VKA08F25 is equipped with a 4-pin D-coded M12-connector on the device side and an RJ45 connector on the network side.

Electrical features

Type of plug-in contact, A connection	Male (connector)
Type of plug-in contact, B connection	Male (connector)
Type of A electrical connection	M12
Type of B electrical connection	RJ45
Number of pins of A connection	4
Number of pins of B connection	4
Supported communication interface	1x 100MbE 1x RS485 EtherCAT Ethernet Ethernet Industrial Protocol
Operating voltage (AC 50Hz)	50V
Operating voltage (DC)	50V
Shielded	Yes
ardTEEL_Uebertragungsklassifizierung	Cat5e

Mechanical features

Number of cores	4
Wire assembly	18 x 0.1mm
Conductor cross-section	0.14mm ²
Outer diameter	4.8mm
Cable sheath color	green
Cable length	10m
Cable infeed of A connection	straight
Cable infeed of B connection	straight
Coding of connection A	D
Housing material	TPU
Material of cable sheath	Plastic (PUR)
Perm. ambient temperature of cable, fixed cable	-40 - 75°C
Ambient temperature	-30 - 70°C
ardTEME_WerkstoffDerKontakteAnschlussA	CuSn, gold-plated
ardTEME_WerkstoffDerKontakteAnsWerkstoff_der_Kontakte_AnschCuZn	gold-plated

Other features

Halogen-free	Yes
--------------	-----

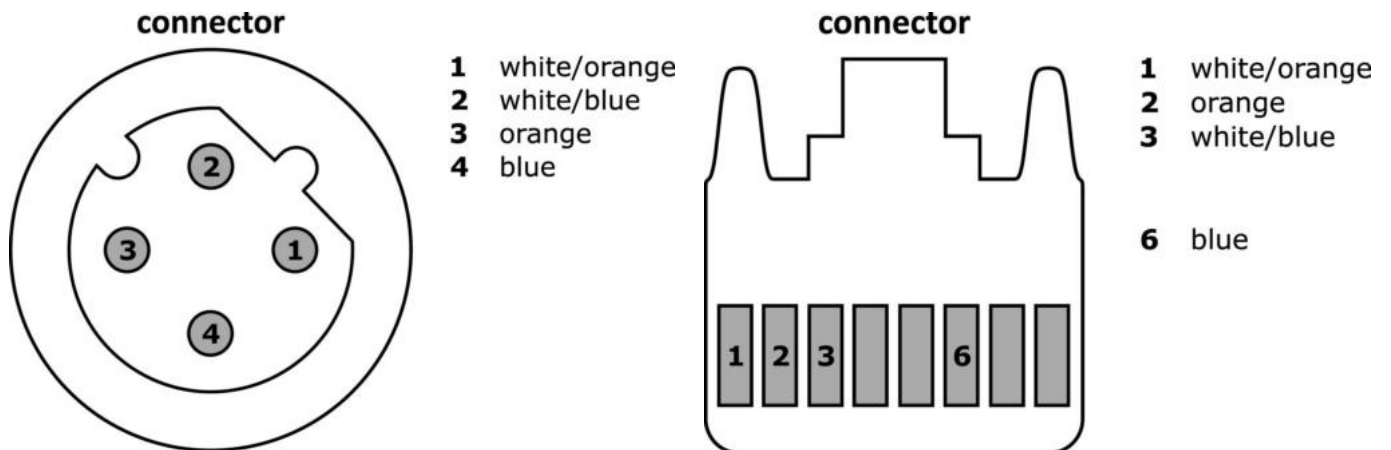
Classification

ETIM 8	EC002599 Patch cable copper industry
--------	--------------------------------------

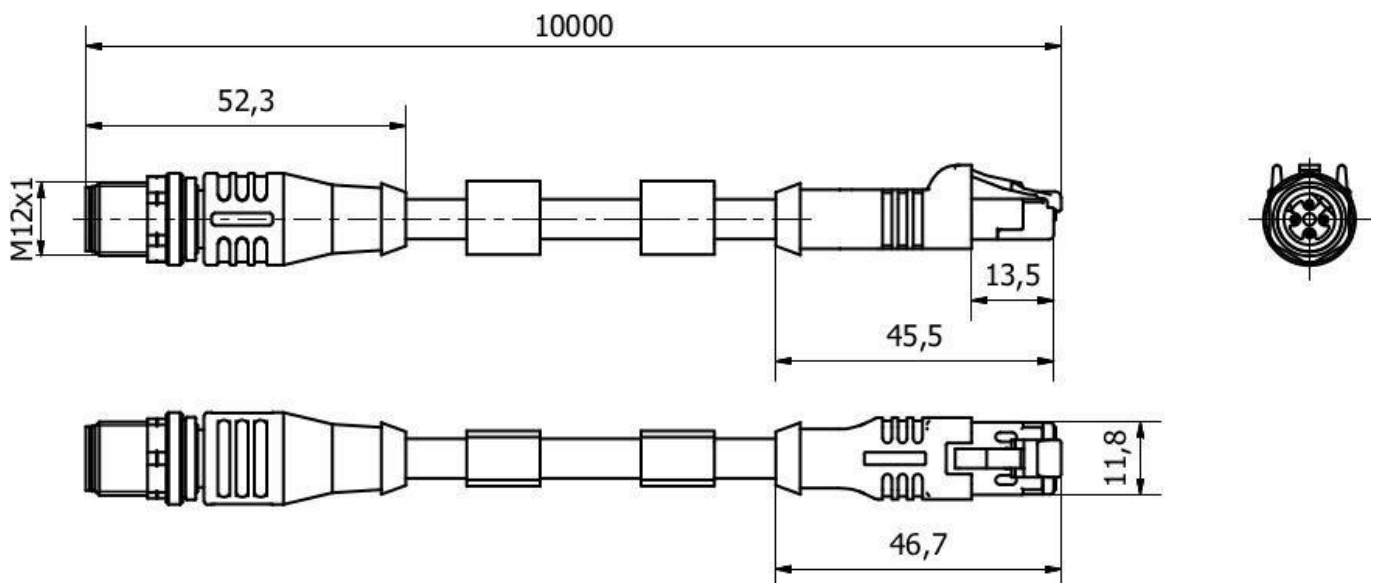
More

IPF Product Group	851 cable sockets / connectors (both side ready made)
packaging dimensions	220 x 220 x 20 mm
gross weight	320 g
Customs tariff number	85444290
WEEE number	40951076
OzDS-compliant	Yes
POP-compliant	Yes
Reach-compliant	Yes
RoHS-compliant	Yes

Connection



Dimensional drawing



Extract accessories program

AV98F002



Tool, wrench insert for torque wrench, SW13

AV000140



You can find further accessories on our homepage

Installation



Mounting / installation may only be carried out by a qualified electrician!

Disposal



Safety warnings

- / Before initial operation, please make sure to follow all safety instructions that may be provided in the product information.
- / Never use these devices in applications where the safety of a person depends on their functionality.