

IB050155

Inductive sensors • Increased ambient temperature

Sensor inductive, M5x0.5 25long, flush, Sn: 0.8, 10-30V diagnostic coverage, -25-120°C, PNP NO, IO-Link, cable 2m silicone, IP67, V2A

including Nut, Toothed washer

/ High switching frequency



Temperature resistant up to +120°C Compact design

Inductive proximity switches are contact-free sensors. They detect all conductive metals, regardless of whether they move or not. The achievable sensing range of the devices depends on the object material and its dimensions. The vibration-resistant sensors can be approached laterally or frontally. Inductive proximity switches are used for presence detection (e.g. goods carriers), positioning (e.g. dampers), counting (e.g. nuts /bolts), speed detection (e.g. for cog wheels), on conveyor systems (e.g. hose feedings) or distance measurements (e.g. press-in checking) of metallic objects.

Electrical features

Display	LED display
Type of switching function	Normally open contact (NO)
Type of electrical connection	Cable
Type of switching output	PNP
Rated switching current	200mA
Relative hysteresis	10%
Correction factor (aluminum)	0.5
Correction factor (copper)	0.45
Correction factor (brass)	0.55
Correction factor (St37)	1
Correction factor (stainl. steel)	0.8
Short-circuit protection	Yes
No-load current	10mA
Line diameter	2.6mm
Relative repeat accuracy	1.25%
Residual ripple	20%
Switching distance	0,8mm
Switching frequency	5000Hz
Switching behavior of the output	Static
Voltage drop	2V
Reverse polarity protection	Yes
Operating voltage (DC)	10 - 30V

Mechanical features

Number of cores	3
Conductor cross-section	0.14mm ²
Alignment of cable entry	axial
Design	Cylinder, screw-thread
Thread pitch	0.5mm
Cable length	2m
Cable infeed	axial
Storage temperature	-40 - 80°C
Length	25mm
Maximum tightening torque	1.5Nm
Mechanical mounting condition for sensor	flush
Degree of protection (IP)	IP67
Active area material of sensor	Plastic (PA6.6)
Housing material	Stainless steel
Material of cable sheath	Silicone
Thread dimension	M5
Ambient temperature	-25 - 120°C

Other features

IO-Link version	V1.0.1
Reference medium / object	Standard measuring plate FE360 5x5x1mm

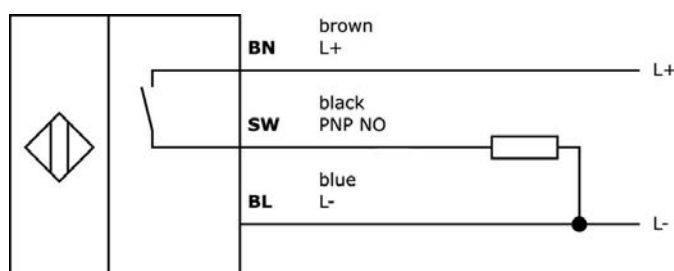
Classification

ETIM 8	EC002714 Inductive proximity switch
--------	-------------------------------------

More

IPF Product Group	202 inductive sensors (high temperature)
packaging dimensions	215 x 180 x 17 mm
gross weight	41 g
Customs tariff number	85365019
WEEE number	40951076
Reach-compliant	Yes
RoHS-compliant	Yes

Connection



Installation

Mounting / installation may only be carried out by a qualified electrician!

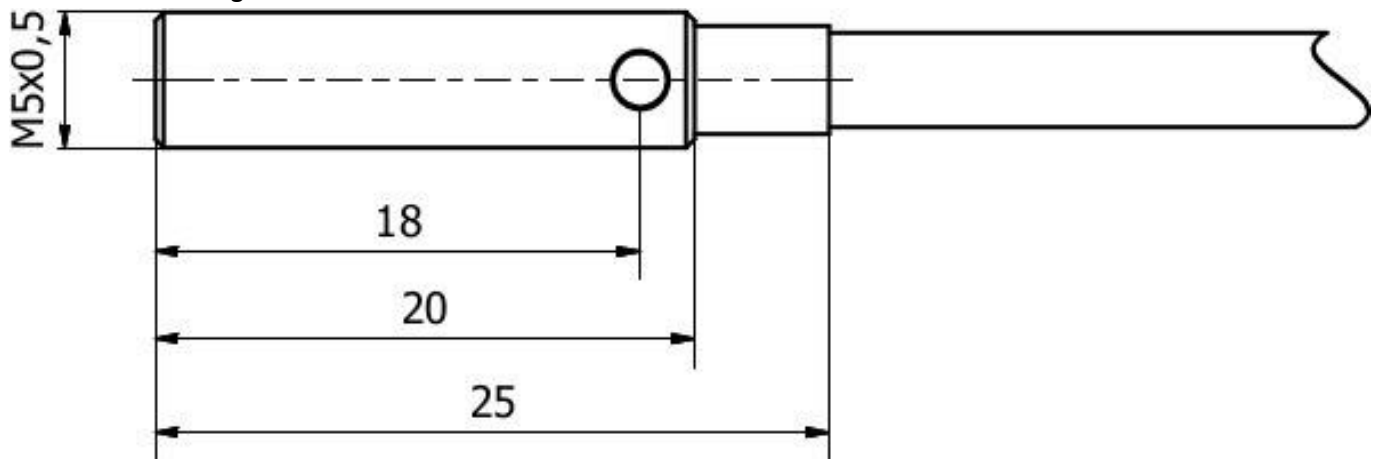
Disposal**Safety warnings**

Before initial operation, please make sure to follow all safety instructions that may be provided in the product information.

Never use these devices in applications where the safety of a person depends on their functionality.

For suitable connection and mounting accessories, please refer to our website www.ipf-electronic.com.

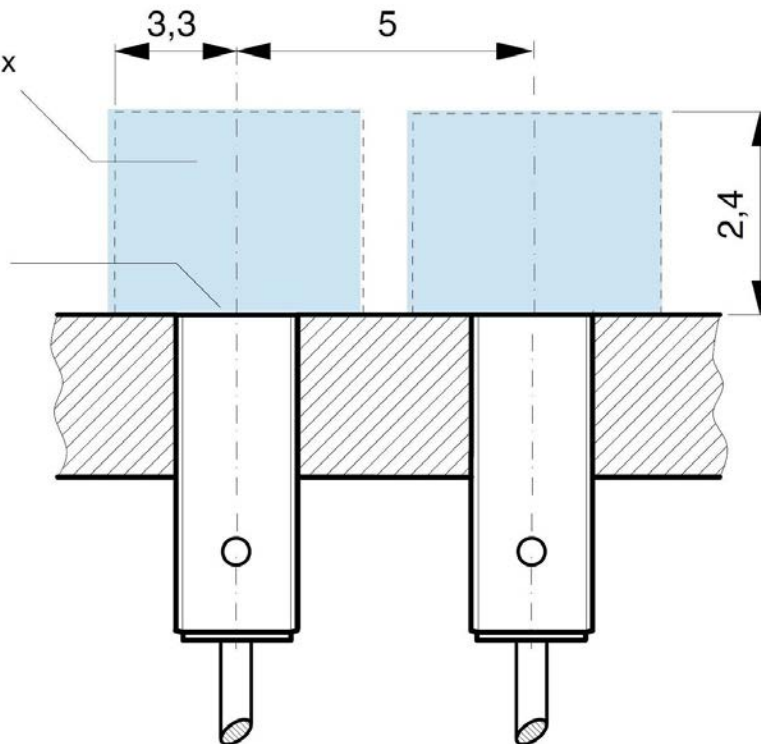
Any software, drivers or IODD files that may be required to operate your device can be downloaded free of charge from our homepage: www.ipf-electronic.com

Dimensional drawing

Installation conditions

metallfreier Raum
espace sans métaux
metal-free space

aktive Fläche
face sensible
sensing face



response curve

