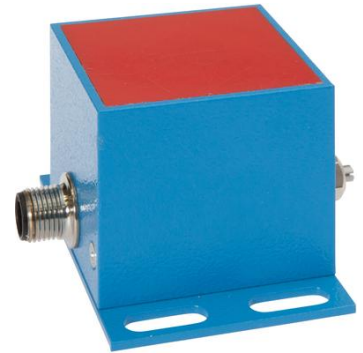


IB98C114

Inductive sensors • Norm switching distance

sensor inductive, 50x47x74mm, Flush, Sn: 40, 10-30V DC, PNP NO, Connector M12, IP67, Aluminum



Inductive proximity switches are contact-free sensors. They detect all conductive metals, regardless of whether they move or not. The achievable sensing range of the devices depends on the object material and its dimensions. The vibration-resistant sensors can be approached laterally or frontally. Inductive proximity switches are used for presence detection (e.g. goods carriers), positioning (e.g. dampers), counting (e.g. nuts /bolts), speed detection (e.g. for cog wheels), on conveyor systems (e.g. hose feedings) or distance measurements (e.g. press-in checking) of metallic objects.

Electrical features

Type of switching function	Normally open contact (NO)
Type of electrical connection	Connector M12
Type of switching output	PNP
Rated switching current	400mA
Switching distance	40mm
Operating voltage (DC)	10 - 30V

Mechanical features

Design	Cuboid
Width	74mm
Height	50mm
Cable infeed	axial
Length	47mm
Mechanical mounting condition for sensor	flush
Degree of protection (IP)	IP67
Active area material of sensor	Plastic (PA6)
Housing material	Aluminum
Ambient temperature	-25 - 70°C

Other features

Ambient temperature	-25 - 70°C
---------------------	------------

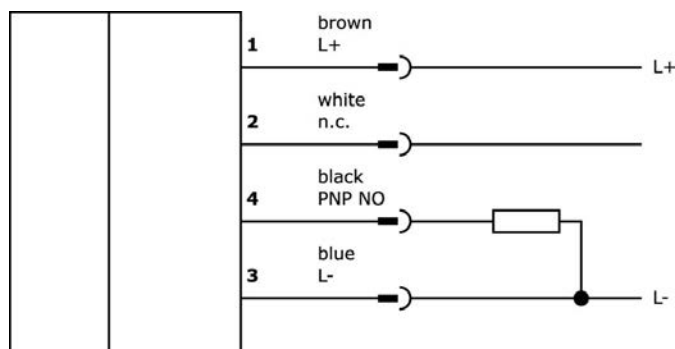
Classification

ETIM 8	EC002714 Inductive proximity switch
--------	-------------------------------------

More

IPF Product Group	215 inductive sensors (cuboid)
packaging dimensions	160 x 99 x 60 mm
gross weight	320 g
Customs tariff number	85365019
WEEE number	40951076
OzDS-compliant	Yes
POP-compliant	Yes
Reach-compliant	Yes
RoHS-compliant	Yes

Connection



Installation



Mounting / installation may only be carried out by a qualified electrician!

Disposal



Safety warnings

Before initial operation, please make sure to follow all safety instructions that may be provided in the product information.

Never use these devices in applications where the safety of a person depends on their functionality.

For suitable connection and mounting accessories, please refer to our website www.ipf-electronic.com.