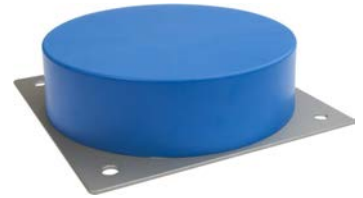


IN850420

Inductive sensors • Norm switching distance

sensor inductive, Ø200mm 60long, Non-flush, Sn: 140, 10-55V DC, PNP
Anticoincidence, Connector M12 4pin, IP67, Aluminum / PTB

including 1x Screwdriver



Inductive proximity switches are contact-free sensors. They detect all conductive metals, regardless of whether they move or not. The achievable sensing range of the devices depends on the object material and its dimensions. The vibration-resistant sensors can be approached laterally or frontally. Inductive proximity switches are used for presence detection (e.g. goods carriers), positioning (e.g. dampers), counting (e.g. nuts /bolts), speed detection (e.g. for cog wheels), on conveyor systems (e.g. hose feedings) or distance measurements (e.g. press-in checking) of metallic objects.

Electrical features

Display	LED display
Type of switching function	Exclusive-OR
Type of electrical connection	Connector M12
Type of switching output	PNP
Rated switching current	400mA
Correction factor (aluminum)	0.4
Correction factor (copper)	0.3
Correction factor (brass)	0.4
Correction factor (St37)	1
Correction factor (stainl. steel)	0.7
Short-circuit protection	Yes
No-load current	4mA
Number of pins	4
Switching distance	140mm
Switching frequency	20Hz
Voltage drop	2V
Reverse polarity protection	Yes
Operating voltage (DC)	10 - 55V

Mechanical features

Alignment of cable entry	axial
Design	Cylinder plain
Diameter	200mm
Cable infeed	axial
Length	60mm
Mechanical mounting condition for sensor	non-flush
Degree of protection (IP)	IP67
Active area material of sensor	Plastic (PBT)
Housing material	PBT
Ambient temperature	-25 - 75°C

Other features

Ambient temperature	-25 - 75°C
---------------------	------------

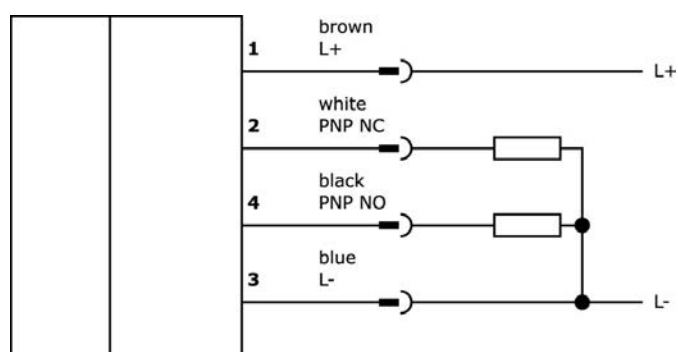
Classification

ETIM 8	EC002714 Inductive proximity switch
--------	-------------------------------------

More

IPF Product Group	203 inductive sensors (diverse)
packaging dimensions	250 x 230 x 80 mm
gross weight	3348 g
Customs tariff number	85365019
WEEE number	40951076
Reach-compliant	Yes
RoHS-compliant	Yes

Connection



Installation



Mounting / installation may only be carried out by a qualified electrician!

Disposal



Safety warnings

Before initial operation, please make sure to follow all safety instructions that may be provided in the product information.

Never use these devices in applications where the safety of a person depends on their functionality.

For suitable connection and mounting accessories, please refer to our website www.ipf-electronic.com.

Dimensional drawing

