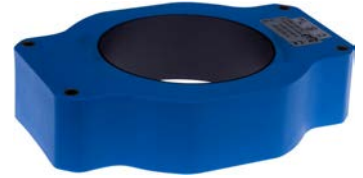


## IYK00320

### Inductive sensors • Ring sensors

sensor inductive, 45x201x140mm, ring 101, 10-35V DC, PNP NC/NO, Connector M12 3pin, IP67, Polyamide, Static



Inductive proximity switches are contact-free sensors. They detect all conductive metals, regardless of whether they move or not. The achievable sensing range of the devices depends on the object material and its dimensions. The vibration-resistant sensors can be approached laterally or frontally. Inductive proximity switches are used for presence detection (e.g. goods carriers), positioning (e.g. dampers), counting (e.g. nuts /bolts), speed detection (e.g. for cog wheels), on conveyor systems (e.g. hose feedings) or distance measurements (e.g. press-in checking) of metallic objects.

#### Electrical features

Response/decay time	1ms
Display	LED display
Type of switching function	Normally closed contact/normally open contact
Type of electrical connection	Connector M12
Type of switching output	PNP
Rated switching current	200mA
Setting procedure	Potentiometer
Pulse stretching	10 - 150ms
No-load current	15mA
Max. parts speed	25m/s
Number of pins	3
Switching behavior of the output	Static
Voltage drop	2V
Reverse polarity protection	Yes
Decay time	10ms
Operating voltage (DC)	10 - 35V
Output functions	Switching point

## Mechanical features

Design	Ring-shaped
Width	140mm
Height	45mm
Cable infeed	axial
Length	201mm
Mechanical mounting condition for sensor	non-flush
Ring diameter	101mm
Degree of protection (IP)	IP67
Active area material of sensor	Plastic (POM)
Housing material	Polyamide PA
Ambient temperature	-25 - 70°C

## Optical features

Resolution, static	10mm
Min. object size	10mm

## Other features

Feeding technology	Yes
Reference medium / object	Steel ball
Ambient temperature	-25 - 70°C

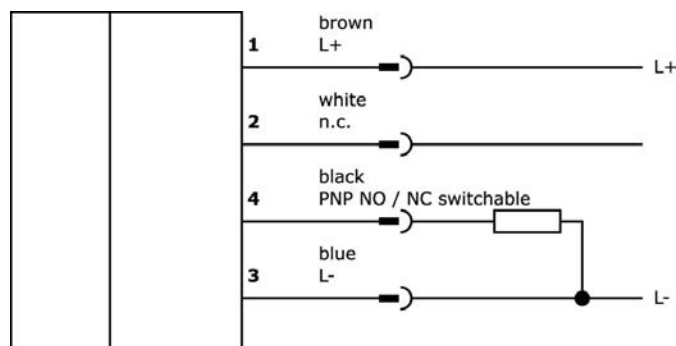
## Classification

ETIM 8	EC002714 Inductive proximity switch
--------	-------------------------------------

## More

IPF Product Group	211 inductive sensors (ring/hose)
packaging dimensions	200 x 200 x 95 mm
gross weight	1001 g
Customs tariff number	85365019
WEEE number	40951076
Reach-compliant	Yes
RoHS-compliant	Yes

## Connection



## Installation



Mounting / installation may only be carried out by a qualified electrician!

## Disposal



## Safety warnings

Before initial operation, please make sure to follow all safety instructions that may be provided in the product information.

Never use these devices in applications where the safety of a person depends on their functionality.

For suitable connection and mounting accessories, please refer to our website [www.ipf-electronic.com](http://www.ipf-electronic.com).

## Dimensional drawing

