

## OV620880

### High performance light barriers • Amplifier

High-power photoelectric sensor amplifier, 58x95x36mm, 24V, NO, terminal, IP20, plastic



The article with the number "OV620880" is a single-channel amplifier for a light barrier from the subgroup "Amplifiers" within the supergroup "High-power light barriers". The amplifier processes the information from the receiver and regulates the power of the transmitter accordingly. Its range is up to 55000mm. High-performance light barrier systems are designed for demanding applications that require extreme dirt resistance and range. They are ideal for sectors such as the wood and paper industry, vehicle washing systems, bulk material control, elevators, outdoor gate control systems, the food industry, etc. The amplifiers and sensors are easy to install and user-friendly to operate.

#### Electrical features

Number of presets to be set	2
Number of channels	1
Number of switching outputs	1
Number of normally open contacts	1
Type of switching function	Normally open contact (NO)
Type of electrical connection	Clamped terminal connection
Type of switching output	Relay contact
Rated switching current	100mA
Input voltage tolerance	20%
Setting procedure	Potentiometer
No-load current	100mA
Power consumption	2.4VA
Switching distance	0 - 55000mm
Switching capacity	6VA
Switching voltage	60V
Switching voltage AC	60V
Switching voltage DC	60V
Operating voltage (DC)	19,2 - 28,8V

**Mechanical features**

Design	Cuboid
Width	35.8mm
Height	58mm
Length	90mm
Mounting method	Top hat rail
Degree of protection (IP)	IP20
Housing material	Plastic
Ambient temperature	-25 - 50°C

**Optical features**

Range (transmitter with increased power, receiver with short design)	10
Range (transmitter with increased power, receiver with normal design)	25
Range (transmitter with maximum power, receiver with short design)	20
Range (transmitter with maximum power, receiver with normal design)	55
Range (transmitter with normal power, receiver with short design)	7
Range (transmitter with normal power, receiver with normal design)	15

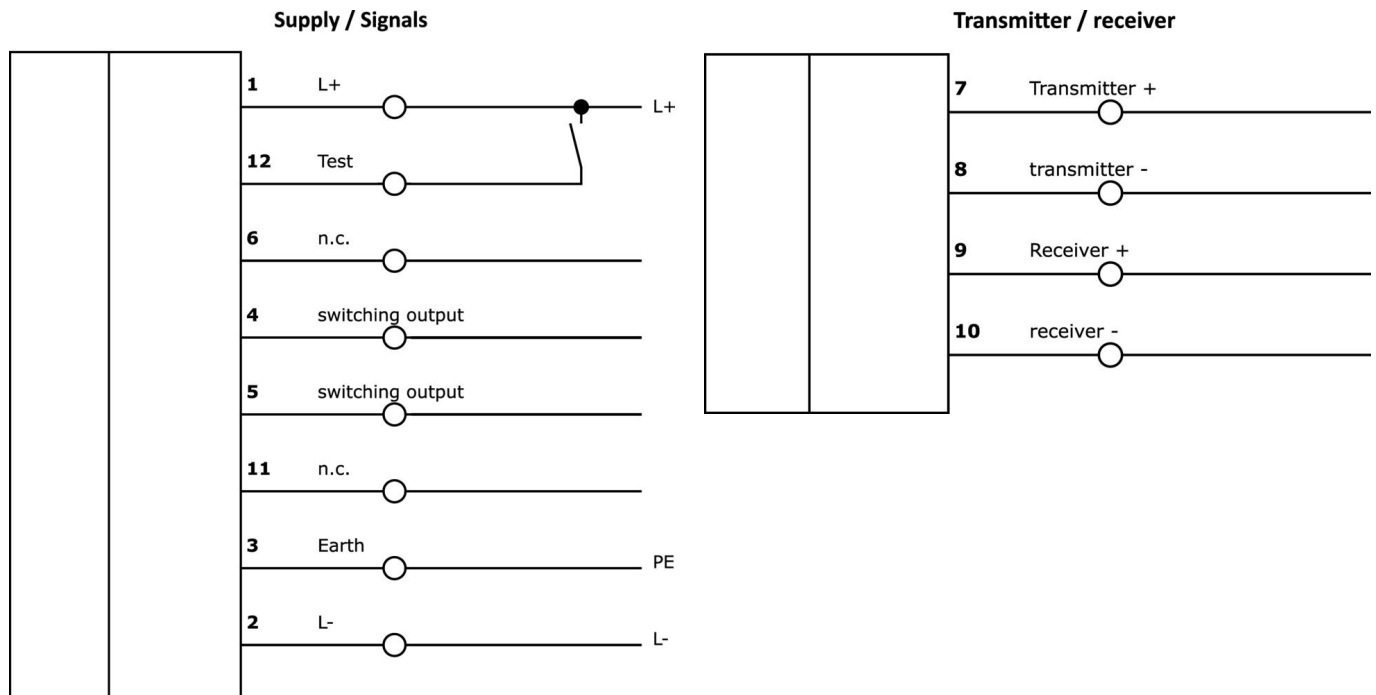
**Classification**

ETIM 8	EC001485 Isolation amplifier
--------	------------------------------

**More**

IPF Product Group	101 high performance through-beam sensors and amplifiers
packaging dimensions	100 x 60 x 64 mm
gross weight	130 g
Customs tariff number	85365019
WEEE number	40951076
Reach-compliant	Yes
RoHS-compliant	Yes

## Connection



## Installation



Mounting / installation may only be carried out by a qualified electrician!

## Disposal



## Safety warnings

Before initial operation, please make sure to follow all safety instructions that may be provided in the product information.

Never use these devices in applications where the safety of a person depends on their functionality.

For suitable connection and mounting accessories, please refer to our website [www.ipf-electronic.com](http://www.ipf-electronic.com).