

## DT25F001

### Pressure sensors • Pressure transmitter

Pressure sensor, Ø26mm 82lang, 0-0,1bar, 9-35V DC, G1 "front-flush, -40-100°C, 4-20mA, M12 connector, IP67, V4A



Pressure sensors are suitable for measuring various media with high accuracy. They are available with switching output and/or analog output. Individual configuration is possible using the integrated IO-Link interface. These sensors are used in all areas, e.g. pneumatic and hydraulic applications.

#### Electrical features

Initial setting	0 hPa
Type of analog output	4 - 20mA
Type of electrical connection	Connector M12
Relative hysteresis	0.1 %
Short-circuit protection	Yes
Measuring range pressure	0 - 0,1 bar
Measurement method	Relative
Number of pins	2
Relative linearity deviation	0.35 %
Residual ripple	6 %
Temperature drift over entire measuring range	0.02 %
Reverse polarity protection	Yes
Operating voltage (DC)	9 - 35 V
ardSOCA_ElektrischerAnschluss	M12 2-pin plug connector
ardSOCA_Betriebsspannung	9-35VDC

## Mechanical features

Type of process connection	G1 inch B
Design	Cylinder plain
Diameter	26 mm
For liquid media	Yes
For pasty media	Yes
Thread length	20 mm
Length	82 mm
Max. operating pressure	0.25 bar
Medium temperature	-40 - 100 °C
Nominal pressure	0.1 bar
Degree of protection (IP)	IP67 / IP69k
Housing material	Stainless steel
Sensing element material	Stainless steel 1.4571
Ambient temperature	-40 - 100 °C
ardSOCA_Abmessungen	Ø26mm, 82mm long
ardTEME_WerkstoffDesProzessanschlusses	Stainless steel 1.4571
ardTEME_WerkstoffDerMesszelle	Stainless steel 1.4571

## Other features

Relative measurement accuracy	0.5 %
-------------------------------	-------

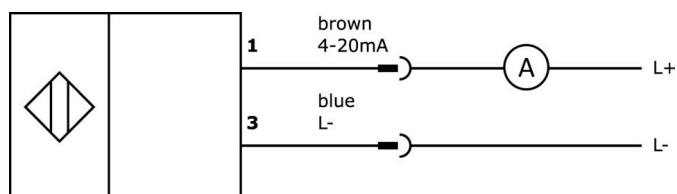
## Classification

ETIM 8	EC000243 Pressure switch
--------	--------------------------

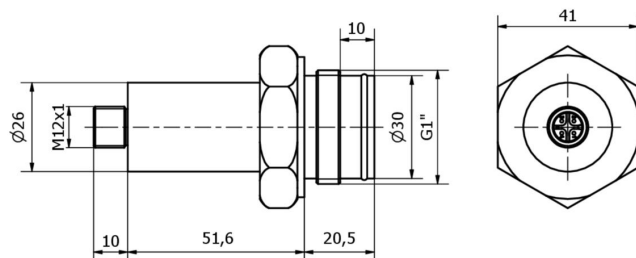
## More

IPF Product Group	361 pressure sensors (diverse)
packaging dimensions	170 x 120 x 70 mm
gross weight	358 g
Customs tariff number	90262020
WEEE number	40951076
Reach-compliant	Yes
RoHS-compliant	Yes
MTTF value	463 year(s)

## Connection



## Dimensional drawing



## Extract accessories program

### VK200021



Connection cable, 2m, M12  
Female (socket) 3pin Angular, Free  
conductor end, 3x0.34mm², PUR  
(Polyurethane), Ø4.3mm, 250V, -  
30-90°C, IP67, Suitable for trailing  
chain and torsion resistant, Oil and  
cooling lubricants, Welding area,  
Silicone-free

### VK200025



Connection cable, 2m, M12  
Female (socket) 3pin Straight, Free  
conductor end, 3x0.34mm², PUR  
(Polyurethane), Ø4.3mm, 250V, -  
30-90°C, IP67, Suitable for trailing  
chain and torsion resistant, Oil and  
cooling lubricants, Welding area,  
Silicone-free

You can find further accessories on our homepage



### Installation

Mounting / installation may only be carried  
out by a qualified electrician!



### Disposal

WEEE number according to § 6 para. 3  
ElektroG: 40951076

## Safety warnings

- / Before initial operation, please make sure to follow all safety instructions that may be provided in the product information.
- / Never use these devices in applications where the safety of a person depends on their functionality.