

## MZ07C199

### Magnetic field sensors • Sensors for T-slot

Sensor Magnetic, cylinder, 6.2mm T-slot, 6.5x27x5mm, 10-30V DC, -25-130°C, 1x PNP NO, M8 cable connector 3-pin 0.3m PTFE, IP67, aluminum, 2.8mT, installation from above, position of sensor surface in middle of device



For many tasks in the field of automation technology, it is necessary to recognize the motional processes in pneumatic and hydraulic cylinders and to detect the position of the piston with precision. For this, magnetic cylinder sensors are used.

#### Electrical features

Number of switching outputs	1
Type of switching function	Normally open contact (NO)
Type of electrical connection	Cable connector M8
Type of switching output	PNP
Rated switching current	100 mA
Absolute hysteresis	1 mm
Short-circuit protection	Yes
No-load current	10 mA
Magnetic sensitivity	2.8 mT
Number of pins	3
Switching frequency	1000 Hz
Sensor surface (active)	Middle area
Voltage drop	2 V
Reverse polarity protection	Yes
Absolute repeat accuracy	0.1 mm
Operating voltage (DC)	10 - 30 V

## Mechanical features

Number of cores	3
Design	Cuboid
Width	5 mm
Height	6.5 mm
Cable length	0.3 m
Sensor surface position	Center of the device
Length	27 mm
Mounting access, cylinder groove	From the top
Degree of protection (IP)	IP67
Housing material	Aluminum
Material of cable sheath	Plastic (PTFE)
Strong vibration / motion	Yes
Ambient temperature	-25 - 130 °C
Ambient temperature of the connector	-25 - 70 °C

## Other features

Suitable for	6.2mm T-slot
Cylinder version	With T-groove
Harsh environmental conditions	Yes
Oil and cooling lubricants	Yes

## Classification

ETIM 8	EC002544 Magnetic proximity switch
--------	------------------------------------

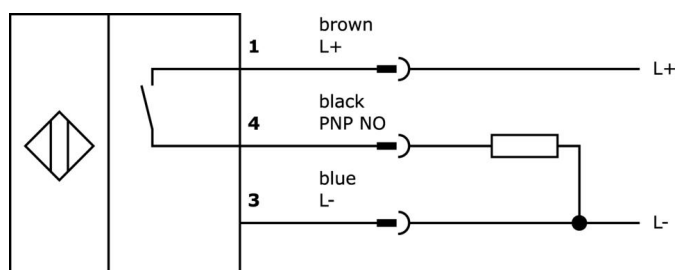
## More

IPF Product Group	222 pneumatic cylinder sensors (high temperature)
packaging dimensions	120 x 100 x 17 mm
gross weight	20 g
Customs tariff number	85365019
WEEE number	40951076
Reach-compliant	Yes
RoHS-compliant	Yes

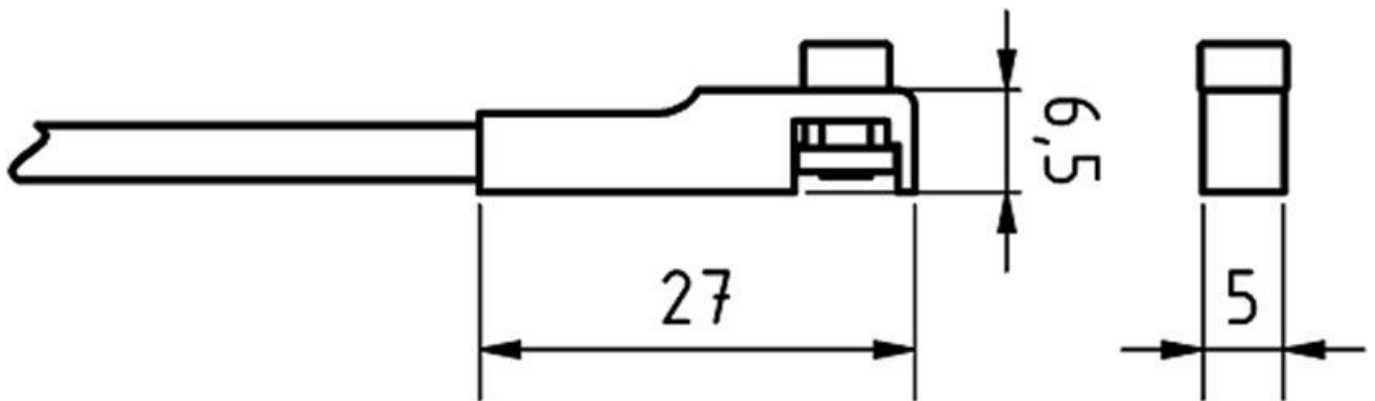
## Important notes

**/** The output electronics are located in the connector. Do not disconnect the connector!

## Connection



## Dimensional drawing



## Extract accessories program

### NG530002



DC power supply, single-phase,  
99x114x22mm, 24V, 0.1A,  
Number of relay outputs 2, 100-  
264V AC 50Hz, 100-264V AC 60Hz,  
Screw connection, IP20, Plastic,  
Stabilized, Output voltage, pulsed

### AM000076



accessories magnetic, clamp, 4x6,  
2x6,2mm, aluminum

### VY000004



DC power supply, sensor tester,  
120x26x72mm, 18V, 0.04A, Spring  
clamp connection 4pin, IP20,  
Plastic

### AY000141



Plastic sheath, Ø17mm, Inner  
diameter 10mm, -40-250°C, Glass  
fiber with silicone rubber, Short-  
term resistance to weld spatter  
1200°C, Tensile strength 400N,  
Flexible, Flame retardant, yard  
good

### AY000154



Tool, Screwdriver set, Internal  
hexagon 0.7mm, Internal hexagon  
0.9mm, Internal hexagon 1.3mm,  
Internal hexagon 1.5mm, Internal  
hexagon 2mm, Slot 1.5mm, Slot  
2mm, Slot 2.5mm, Chromium steel

### AM98E153



accessories magnetic, Installation  
tape, 259x9,5mm, Span 35-68mm,  
For sensor MZ07, Stainless steel

### AM98A882



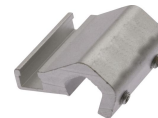
accessories magnetic, For sensor  
MZ07, for Cylinder, Bosch profiled  
barrel, Screw mounting

### AM000070



accessories magnetic, Mounting  
clip, 12x30x25mm, span 3.9-6.  
6mm, Metal, For sensor MZ07, for  
Cylinder pull-rod, Screw mounting

### AM000071



accessories magnetic, Mounting  
clip, 16x30x30mm, span 6.1-8.  
5mm, Aluminum, For sensor  
MZ07, for Cylinder pull-rod, Screw  
mounting

You can find further accessories on our homepage



### Installation

Mounting / installation may only be carried  
out by a qualified electrician!



### Disposal

WEEE number according to § 6 para. 3  
ElektroG: 40951076

## Safety warnings

/ Before initial operation, please make sure to follow all safety instructions that may be provided in the product information.

/ Never use these devices in applications where the safety of a person depends on their functionality.