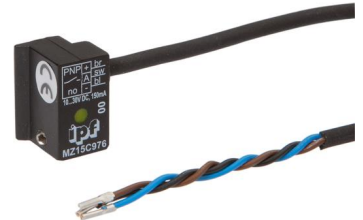


## MZ15C976

### Magnetic field sensors • Sensors for trapezoidal groove

sensor magnetic, cylinder, Trapezoidal groove, 14x20x14mm, 10-30V DC, 1x PNP NO,  
Cable 5m PUR (Polyurethane), IP67, Zinc die-cast, LED, 2.8mT, mounting From the top,  
Sensor surface position Center of the device



For many tasks in the field of automation technology, it is necessary to recognize the motional processes in pneumatic and hydraulic cylinders and to detect the position of the piston with precision. For this, magnetic cylinder sensors are used.

#### Electrical features

Number of switching outputs	1
Display	LED display
Type of switching function	Normally open contact (NO)
Type of electrical connection	Cable
Type of switching output	PNP
Rated switching current	150 mA
Absolute hysteresis	1 mm
Short-circuit protection	Yes
No-load current	15 mA
Magnetic sensitivity	2.8 mT
Switching frequency	1000 Hz
Sensor surface (active)	Middle area
Voltage drop	2 V
Reverse polarity protection	Yes
Absolute repeat accuracy	0.1 mm
Operating voltage (DC)	10 - 30 V
ardSOCA_ElektrischerAnschluss	Cable tail 5m

## Mechanical features

Number of cores	3
Design	Cuboid
Width	13.5 mm
Height	13.5 mm
Cable length	5 m
Sensor surface position	Center of the device
Length	20 mm
Mounting access, cylinder groove	From the top
Degree of protection (IP)	IP67
Housing material	Zinc die-cast
Material of cable sheath	Plastic (PUR)
Strong vibration / motion	Yes
Ambient temperature	-25 - 75 °C
ardSOCA_Abmessungen	20x13.5x13.5mm

## Other features

Harsh environmental conditions	Yes
Oil and cooling lubricants	Yes

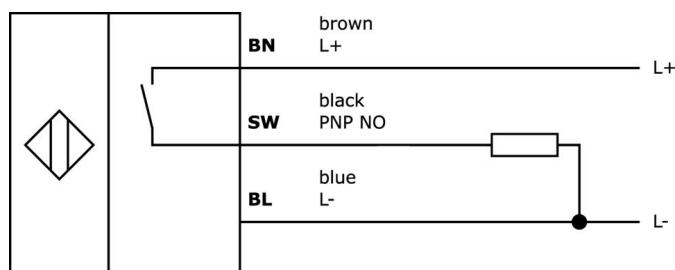
## Classification

ETIM 8	EC002544 Magnetic proximity switch
--------	------------------------------------

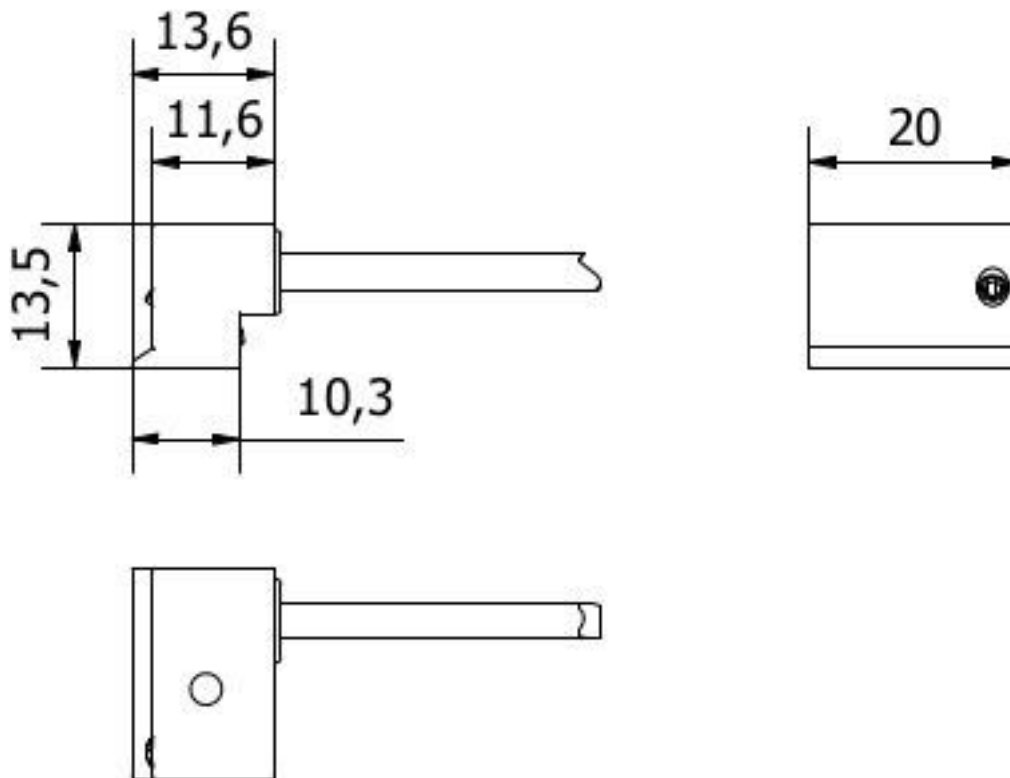
## More

IPF Product Group	223 pneumatic cylinder sensors (diverse)
packaging dimensions	149 x 124 x 28 mm
gross weight	130 g
Customs tariff number	85365019
WEEE number	40951076
Reach-compliant	Yes
RoHS-compliant	Yes

## Connection



## Dimensional drawing



## Extract accessories program

### VY850001



Inverter/signal-inversion/turn-off delay, 85x65x18mm, 0.01-10s, 12-30V DC, 1x NC/NO, Clamp 8pin, IP40, Plastic, Plug-in jumpers

### VY850002



Inverter/signal-inversion/turn-off delay, 85x65x18mm, 0.01-10s, 12-30V DC, 1x NC/NO, Clamp 8pin, IP40, Plastic, Plug-in jumpers

### NG530002



DC power supply, single-phase, 99x114x22mm, 24V, 0.1A, Number of relay outputs 2, 100-264V AC 50Hz, 100-264V AC 60Hz, Screw connection, IP20, Plastic, Stabilized, Output voltage, pulsed

### VY000004



DC power supply, sensor tester, 120x26x72mm, 18V, 0.04A, Spring clamp connection 4pin, IP20, Plastic

### AY000154



Tool, Screwdriver set, Internal hexagon 0.7mm, Internal hexagon 0.9mm, Internal hexagon 1.3mm, Internal hexagon 1.5mm, Internal hexagon 2mm, Slot 1.5mm, Slot 2mm, Slot 2.5mm, Chromium steel

### AY000141



Plastic sheath, Ø17mm, Inner diameter 10mm, -40-250°C, Glass fiber with silicone rubber, Short-term resistance to weld spatter 1200°C, Tensile strength 400N, Flexible, Flame retardant, yard good

You can find further accessories on our homepage



### Installation

Mounting / installation may only be carried out by a qualified electrician!



### Disposal

WEEE number according to § 6 para. 3  
ElektroG: 40951076

## Safety warnings

/ Before initial operation, please make sure to follow all safety instructions that may be provided in the product information.

/ Never use these devices in applications where the safety of a person depends on their functionality.