

MZA7C849

Magnetic field sensors • Sensors for T-slot

sensor magnetic, cylinder, 6.2mm T-groove, 16x20x9,2mm, 10-30V DC, 1x PNP NO, Connector M8 3pin, IP67, Zinc die-cast, LED, 2.8mT, mounting From the top, Packaging unit 100 (MZA72175), Sensor surface position Border area of the device



For many tasks in the field of automation technology, it is necessary to recognize the motional processes in pneumatic and hydraulic cylinders and to detect the position of the piston with precision. For this, magnetic cylinder sensors are used.

Electrical features

Number of switching outputs	1
Display	LED display
Type of switching function	Normally open contact (NO)
Type of electrical connection	Connector M8
Type of switching output	PNP
Rated switching current	150 mA
Absolute hysteresis	1 mm
Short-circuit protection	No
No-load current	15 mA
Magnetic sensitivity	2.8 mT
Number of pins	3
Switching frequency	1000 Hz
Sensor surface (active)	Border area / edge area
Voltage drop	2 V
Reverse polarity protection	Yes
Absolute repeat accuracy	0.1 mm
Operating voltage (DC)	10 - 30 V
ardSOCA_ElektrischerAnschluss	M8 3-pin plug connector

Mechanical features

Conductor cross-section	0.5 mm ²
Design	Cuboid
Width	9.2 mm
Height	16.5 mm
Sensor surface position	Device edge area below the connector
Length	20 mm
Mounting access, cylinder groove	From the top
Degree of protection (IP)	IP67
Housing material	Zinc die-cast
Strong vibration / motion	Yes
Ambient temperature	-25 - 70 °C
ardSOCA_Abmessungen	20x9,2x16,5mm

Other features

Suitable for	6.2mm T-slot
Harsh environmental conditions	Yes
Oil and cooling lubricants	Yes

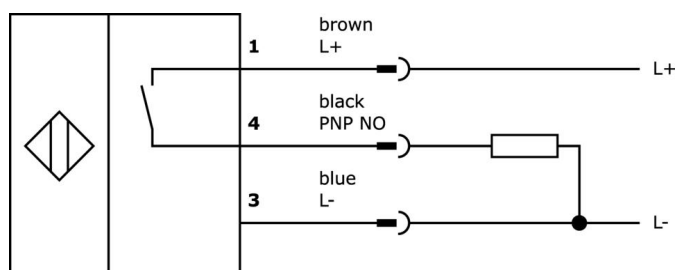
Classification

ETIM 8	EC002544 Magnetic proximity switch
--------	------------------------------------

More

IPF Product Group	221 pneumatic cylinder sensors (low cost / reed)
packaging dimensions	200 x 130 x 25 mm
gross weight	1760 g
Customs tariff number	85365019
WEEE number	40951076
Reach-compliant	Yes
RoHS-compliant	Yes

Connection



Extract accessories program

VY000004



DC power supply, sensor tester,
120x26x72mm, 18V, 0.04A, Spring
clamp connection 4pin, IP20,
Plastic

NG530002



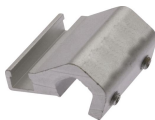
DC power supply, single-phase,
99x114x22mm, 24V, 0.1A,
Number of relay outputs 2, 100-
264V AC 50Hz, 100-264V AC 60Hz,
Screw connection, IP20, Plastic,
Stabilized, Output voltage, pulsed

AM000070



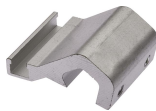
accessories magnetic, Mounting
clip, 12x30x25mm, span 3.9-6.
6mm, Metal, For sensor MZ07, for
Cylinder pull-rod, Screw mounting

AM000071



accessories magnetic, Mounting
clip, 16x30x30mm, span 6.1-8.
5mm, Aluminum, For sensor
MZ07, for Cylinder pull-rod, Screw
mounting

AM000072



accessories magnetic, Mounting
clip, 18x30x38mm, span 8.95-10.
7mm, Aluminum, For sensor
MZ07, for Cylinder pull-rod, Screw
mounting

AM000073



accessories magnetic, Mounting
clip, 16x30x25mm, span 7.65-11.
25mm, Aluminum, For sensor
MZ07, for Profile cylinders, Screw
mounting

AM000074



accessories magnetic, Mounting
clip, 18x30x28mm, span 10.8-14.
2mm, Aluminum, For sensor
MZ07, for Profile cylinders, Screw
mounting

AM000075



accessories magnetic, Mounting
clip, 24x30x32mm, span 13.25-16.
88mm, Aluminum, For sensor
MZ07, for Profile cylinders, Screw
mounting

AM000076



accessories magnetic, clamp, 4x6,
2x6,2mm, aluminum

You can find further accessories on our homepage



Installation

Mounting / installation may only be carried
out by a qualified electrician!



Disposal

WEEE number according to § 6 para. 3
ElektroG: 40951076

Safety warnings

- / Before initial operation, please make sure to follow all safety instructions that may be provided in the product information.
- / Never use these devices in applications where the safety of a person depends on their functionality.