

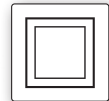
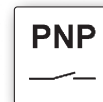
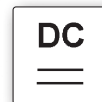
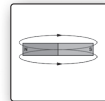
dimensions
 6.2 x 6.3 x 30mm
 10.1 x 22 x 23mm
 9.6 x 16 x 22mm

T-groove sensor surface edge area
 middle area

- ✓ easy mounting
- ✓ high switching accuracy with small hysteresis
- ✓ integrated amplifier
- ✓ high switching frequency
- ✓ LED display
- ✓ connection via cable, M8- or M12-connector
- ✓ robust metal housing (vibration-resistant)



electronic microsensor
impact-resistant and wear-free



description

On automatic machines, there is often the requirement that a switching signal must be received at certain piston positions of a pneumatic cylinder. Here, magnetic cylinder sensors are used.

These magnetic sensors are used for contactless and wear-free position detection in control technology.

Magnetic cylinder sensors offer a high switching distance yet still have a small design.

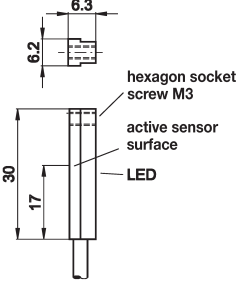
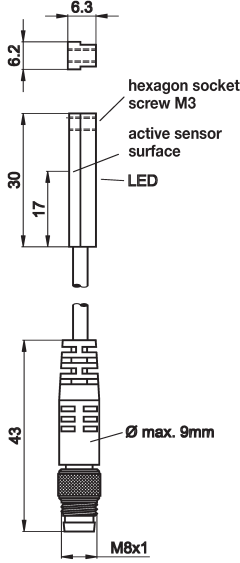
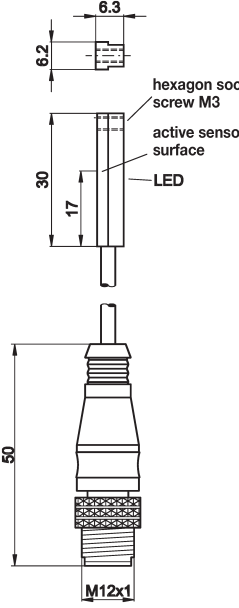
Because magnetic fields penetrate all non-magnetizable materials, the sensors are able to detect magnets through non-ferrous metal, stainless steel or aluminum.

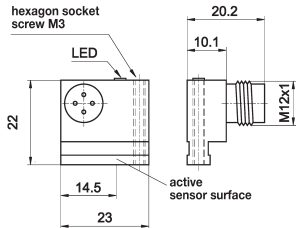
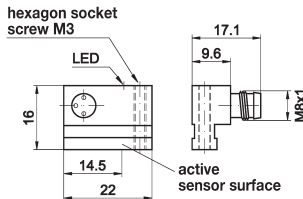
The electronic cylinder sensors can be used on all cylinders from leading manufacturers (Bosch, Festo, Norgren Martonair, Numatics) and are directly interchangeable with reed switches that use three-wire system technology.

To retain the same position when replacing a cylinder switch, the locking stop **AM000076** is available as an accessory.

application examples

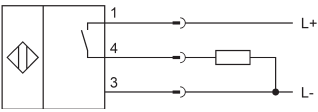
- ▶ position detection of a cylinder piston
- ▶ end position sensing

article-no.	MZ0701A4	MZ070174	MZ070124
connection	2m PUR cable	0.3m M8-cable connector	0.3m M12-cable connector
article-no.	-	MZ0701F4	MZ0701E4
connection	-	0.6m M8-cable connector	0.6m M12-cable connector
article-no.	-	MZ0701K4	-
connection	-	1.0m M8-cable connector	-
article-no.	-	-	MZ0701U4
connection	-	-	2.0m M12-cable connector
<div>    </div>			
TECHNICAL DATA			
sensor surface (active)	edge area	edge area	middle area
output signal	pnnp, no	pnnp, no	pnnp, no
operating voltage	10 ... 30V DC	10 ... 30V DC	10 ... 30V DC
current consumption (w/o load)	≤ 15mA	≤ 15mA	≤ 15mA
output current (max. load)	150mA	150mA	150mA
voltage drop (max. load)	2.0V DC	2.0V DC	2.0V DC
switching hysteresis	typ. 1mm	typ. 1mm	typ. 1mm
repeatability	±0.1mm	±0.1mm	±0.1mm
switching frequency	1kHz	1kHz	1kHz
display (signal)	yellow LED	yellow LED	yellow LED
short-circuit protection	+	+	+
reverse polarity protection	+	+	+
housing material	zinc diecast	zinc diecast	zinc diecast
dimensions	6.2x6.3x30mm	6.2x6.3x30mm	6.2x6.3x30mm
operating temperature	-25 ... +75°C	-25 ... +75°C	-25 ... +75°C
degree of protection (EN 60529)	IP67	IP67	IP67
connection	2m PUR cable, 3-wire	M8-cable connector, 3-pin	M12-cable connector, 3-pin
connection accessories	-	e.g. VK200075	e.g. VK200025
mounting accessories	AM000076	AM000076	AM000076

article-no.	MZ070125	MZ070175
connection	M12-connector	M8-connector
<div>   </div>		
TECHNICAL DATA		
sensor surface (active)	edge area	edge area
output signal	pnp, no	pnp, no
operating voltage	10 ... 30V DC	10 ... 30V DC
current consumption (w/o load)	≤ 15mA	≤ 15mA
output current (max. load)	150mA	150mA
voltage drop (max. load)	2.0V DC	2.0V DC
hysteresis	typ. 1mm	typ. 1mm
repeatability	±0.1mm	±0.1mm
switching frequency	1kHz	1kHz
display (signal)	yellow LED	yellow LED
short-circuit protection	+	+
reverse polarity protection	+	+
housing material	aluminum	zinc diecast
dimensions	10.1x22x23mm	9.6x16x22mm
operating temperature	-25 ... +75°C	-25 ... +75°C
degree of protection (EN 60529)	IP67	IP67
connection	M12-connector, 3-pin	M8-connector, 3-pin
connection accessories	e.g. VK200025	e.g. VK200075
mounting accessories	AM000076	AM000076

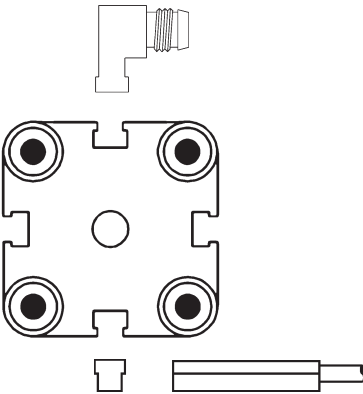
connection

cable-connector device

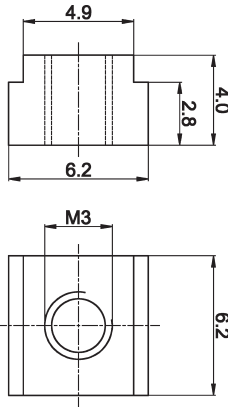


1	L+	br	brown
4	pnp/no	bl	black
3	L-	bl	blue

mounting



AM000076 positive stop



ACCESSORIES

article-no.	description	material
AM000076	positive stop for T-groove	zinc

This data sheet only contains the available standard variants. For other output / connection variants, we kindly ask that you contact us.

We are happy to supply the right cable socket for the plug equipment. You will find a list in the “accessories” section of the catalog under **ipf-SENSORFLEX®** “cable sockets” or in the search window on our homepage www.ipf-electronic.com (using the search term “VK”).

Warning: Never use these devices in applications where the safety of a person depends on their functionality.