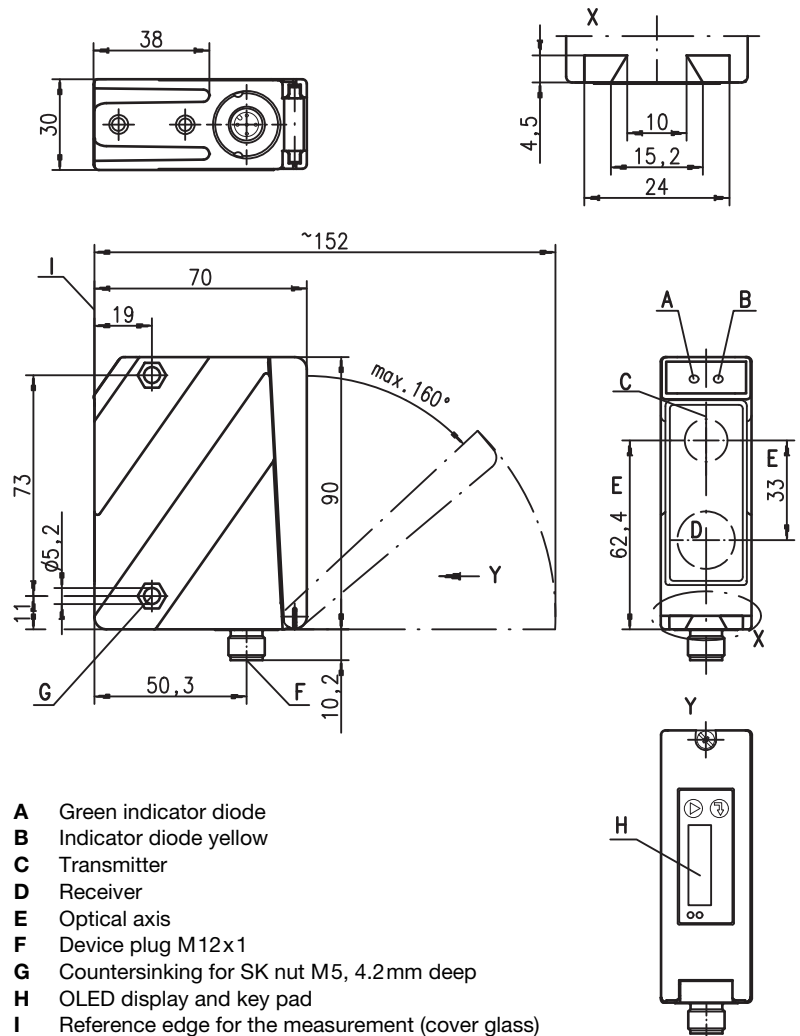


ODS 96B

Dimensioned drawing



Electrical connection

ODS 96B M/V6-...-S12

18-30V DC +	1	br/BN
teach in	2	ws/WH
GND	3	bl/BU
1-10V	4	sw/BK
	5	gr/GY

120 ... 1400mm



- Reflection-independent distance information
- Highly insensitive to extraneous light
- Analogue voltage output
- PC/OLED display and key pad for configuration
- Measurement value is indicated in mm on OLED display
- Measurement range and mode adjustable
- Switching output and teachable analogue output



Accessories:

(available separately)

- Mounting systems
- Cable with M12 connector (K-D ...)
- Configuration software

Specifications

Optical data

Measurement range ¹⁾	120 ... 1400mm
Resolution ²⁾	0.1 ... 2mm
Light source	LED
Wavelength	880nm (infrared light)
Light spot	approx. 15 x 15mm ² at 600mm

Error limits (relative to measurement distance)

Absolute measurement accuracy ¹⁾	± 1.5 % up to 800mm, ± 2 % up to 1400mm
Repeatability ³⁾	± 0.5 % up to 800mm, ± 1 % up to 1400mm
B/w detect. thresholds (6 ... 90% rem.)	≤ 1 % up to 800mm, ≤ 2 % up to 1400mm
Temperature compensation	yes ⁴⁾

Timing

Measurement time	1 ... 5 ¹⁾ ms
Response time ¹⁾	≤ 15ms
Delay before start-up	≤ 300ms

Electrical data

Operating voltage U_B	18 ... 30VDC (incl. residual ripple)
Residual ripple	≤ 15 % of U_B
Open-circuit current	≤ 150mA
Switching output	push-pull switching output ⁵⁾ , PNP light switching, NPN dark switching
Signal voltage high/low	≥ ($U_B - 2$ V) / ≤ 2V
Analogue output	voltage 1 ... 10V / 0 ... 10V / 1 ... 5V / 0 ... 5V, $R_L \geq 2k\Omega$

Indicators

Green LED	continuous light
	flashing
	off
Yellow LED	continuous light
	flashing
	off

teach-in on GND

ready
fault
no voltage
object inside teach-in measurement distance
object outside teach-in measurement distance

teach-in on + U_B

teaching procedure

teaching procedure

Mechanical data

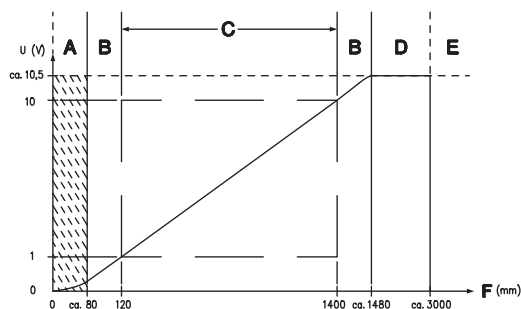
Housing	diecast zinc
Optics cover	glass
Weight	380g
Connection type	M12 connector

metal housing

Environmental data

Ambient temp. (operation/storage)	-20°C ... +50°C / -30°C ... +70°C
Protective circuit ⁶⁾	1, 2, 3
VDE safety class ⁷⁾	II, all-insulated
Protection class	IP 67, IP 69K ⁸⁾
Standards applied	IEC/EN 60947-5-2

- 1) Luminosity coefficient 6 % ... 90 %, complete measurement range, at 20°C, medium range of U_B , measurement object $\geq 50 \times 50 \text{ mm}^2$
- 2) Minimum and maximum value depend on measurement distance
- 3) Same object, identical environmental conditions, measurement object $\geq 50 \times 50 \text{ mm}^2$
- 4) Typ. ± 0.02 %/K
- 5) The push-pull switching outputs must not be connected in parallel
- 6) 1=transient protection, 2=polarity reversal protection, 3=short circuit protection for all outputs
- 7) Rating voltage 250VAC, with cover closed
- 8) IP 69K test in accordance with DIN 40050 part 9 simulated, high pressure cleaning conditions without the use of additives. Acids and bases are not part of the test



- A Area not defined
- B Linearity not defined
- C Measurement range
- D Object present
- E No object detected
- F Measurement distance

Tables

Diagrams

Remarks

- Measurement time depends on the reflectivity of the measurement object and on the measurement mode.
- **Approved purpose:**
This product may only be used by qualified personnel and must only be used for the approved purpose. This sensor is not a safety sensor and is not to be used for the protection of persons.

Order guide

	Designation	Part No.
With M12 connector	ODS 96B M/V6-1400-S12	50110231