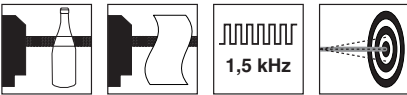
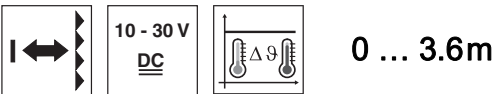


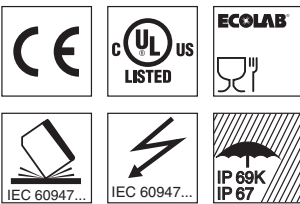
PRK18B

Tracking retro-reflective photoelectric sensors for bottles and films

en 2019/06/05 50121190-04



- Retro-reflective photoelectric sensors with autocollimation optics for reliable detection of highly-transparent bottles and films
- Sensitivity adjustment via teach button
- Temperature compensation $\pm 20^{\circ}\text{C}$
- Automatic contamination compensation (tracking function) for longer intervals between cleanings

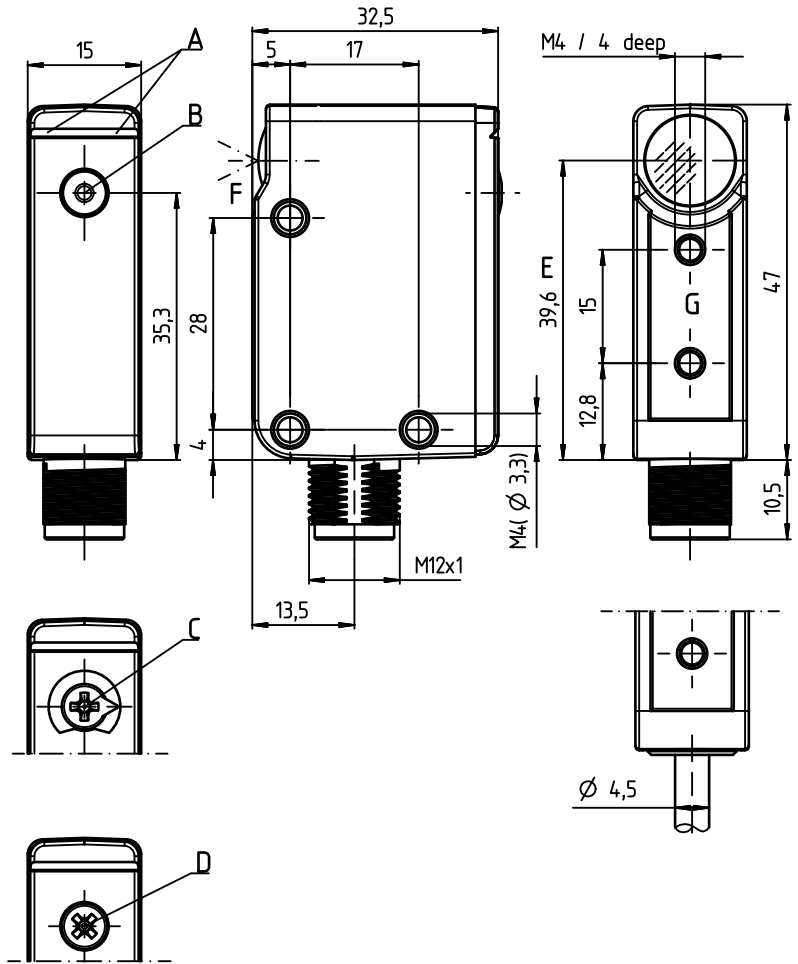


Accessories:

(available separately)

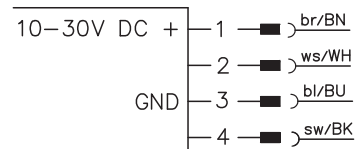
- Mounting system (BTU 200, BT 95)
- M12 connection technology (K-D M12)
- Reflectors (TK, MTK)
- Reflective tape (REF)
- Deflecting mirror (US18B)

Dimensioned drawing



- A Display
- B Teach button
- C 270° potentiometer
- D 11-turn potentiometer
- E Optical axis
- F Optical accuracy
- G Reference plane for F

Electrical connection



	Pin 1	Pin 2	Pin 3	Pin 4
PRK18B.TT3/4P-M12	+	PNP dark	GND	PNP light
PRK18B.TT3/P4-M12	+	PNP light	GND	PNP dark
PRK18B.XTT3/4P-M12	+	PNP dark	GND	PNP light
PRK18B.TT3/2N-M12	+	NPN dark	GND	NPN light
PRK18B.TT3/6G-M12	+	Push-pull (PNP dark, NPN light)	GND	Push-pull (PNP light, NPN dark)

We reserve the right to make changes • PAL_PRK18BTT_en_50121190_04.fm

Technical data

Optical data

Typ. op. range limit (TK(S) 100x100) ¹⁾	0 ... 3.6m
Operating ranges ²⁾	See tables
Light source ³⁾	LED (modulated light)
Wavelength	620nm (visible red light)
Optical accuracy	Type dependent (see order guide)

Time behavior

Switching frequency	1500 Hz
Response time	0.333ms
Jitter time	110µs
Readiness delay	< 300ms

Electrical data

Operating voltage UB ⁴⁾	10 ... 30VDC (incl. residual ripple)
Residual ripple	≤ 15 % of UB
Open-circuit current	≤ 18mA
Switching outputs/functions	/6G 2 push-pull switching outputs Pin 2: PNP dark switching, NPN light switching /4P 2 PNP switching outputs, antivalent, pin 2: dark switching, pin 4: light switching /P4 2 PNP switching outputs, antivalent, pin 2: light switching, pin 4: dark switching /4X 1 PNP switching output, light switching /PX 1 PNP switching output, dark switching /2N 2 NPN switching outputs, antivalent /2X 1 NPN switching output, light switching /NX 1 NPN switching output, dark switching
Signal voltage high/low	≥ (UB-2V) ≤ 2V
Output current	Max. 100mA
Sensitivity	Adjustment via teach button (see order guide)

Indicators

Green LED	Ready
Yellow LED	Light path free
Yellow/green LED, flashing synchronously (9Hz)	Error

Mechanical data

Housing ⁵⁾	Diecast zinc, chemically nickel-plated
Connector	Diecast zinc, chemically nickel-plated
Optics	Glass
Operation	Teach button
Weight	With M12 connector: 60g With 6000mm cable: 240g
Connection type	M12 connector, 4-pin Cable 6000mm, 4 x 0.20mm ²

Environmental data

Ambient temp. (operation/storage)	-40°C ... +60°C/-40°C ... +70°C
Protective circuit ⁶⁾	2, 3
VDE protection class ⁷⁾	III
Degree of protection	IP67, IP 69K
Light source	Exempt group (in acc. with EN 62471)
Standards applied	IEC 60947-5-2
Certifications	UL 508, C22.2 No.14-13 ⁴⁾ ⁸⁾
Chemical resistance	Tested in accordance with ECOLAB

- 1) Typ. operating range limit: max. attainable range without function reserve
- 2) Operating range: recommended range with function reserve
- 3) Average life expectancy 100,000h at an ambient temperature of 25°C
- 4) For UL applications: use is permitted exclusively in Class 2 circuits according to NEC
- 5) Color changes due to cleaning agents do not adversely affect the coating
- 6) 2=polarity reversal protection, 3=short circuit protection for all transistor outputs
- 7) Rating voltage 50V
- 8) These proximity switches shall be used with UL Listed Cable assemblies rated 30V, 0.24A min, in the field installation, or equivalent (categories: CYJV/CYJV7 or PVVA/PVVA7)

Tables

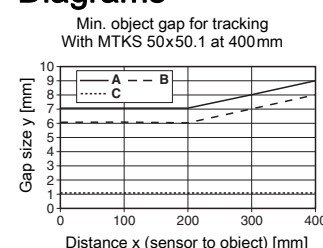
Reflectors	Operating range
1 TK(S) 100x100	0 ... 3.0m
2 MTKS 50x50.1	0 ... 2.8m
3 TK(S) 40x60	0 ... 2.5m
4 TK(S) 30x50	0 ... 1.1m
5 TK(S) 20x40	0 ... 1.1m
6 Film 6 50x50	0 ... 1.0m

1	0	3.0	3.6
2	0	2.8	3.3
3	0	2.5	3.0
4	0	1.1	1.3
5	0	1.1	1.3
6	0	1.0	1.2

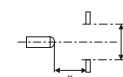
Operating range [m]
Typ. operating range limit [m]

TK ... = adhesive
TKS ... = screw type
Film 6 = adhesive

Diagrams



- A 11% sensor sensitivity
- B 18% sensor sensitivity
- C 100% sensor sensitivity



Notes

Observe intended use!

- ⚠ This product is not a safety sensor and is not intended as personnel protection.
- ⚠ The product may only be put into operation by competent persons.
- ⚠ Only use the product in accordance with its intended use.

- **Reflectors;**
The light spot may not exceed the reflector. Preferably use MTK(S) reflectors or reflective tape 6.

UL REQUIREMENTS

Enclosure Type Rating: Type 1

For Use in NFPA 79 Applications only.

Adapters providing field wiring means are available from the manufacturer. Refer to manufacturers information.

CAUTION – the use of controls or adjustments or performance of procedures other than those specified herein may result in hazardous radiation exposure.

ATTENTION ! Si d'autres dispositifs d'alignement que ceux préconisés ici sont utilisés ou s'il est procédé autrement qu'indiqué, cela peut entraîner une exposition à des rayonnements et un danger pour les personnes.

PRK18B

Tracking retro-reflective photoelectric sensors for bottles and films

Part number code

P	R	K	1	8	B	.	F	X	T	T	3	/	4	P	-	M	1	2
---	---	---	---	---	---	---	---	---	---	---	---	---	---	---	---	---	---	---

Operating principle

PRK Retro-reflective photoelectric sensor for bottles

RK Retro-reflective photoelectric sensor for films
(Function against any reflective tapes and glass triple reflectors)

Series

18B 18B series

Time behavior

F High Speed

Free Standard

Optical accuracy

X Optical axis aligned, error angle < $\pm 0.25^\circ$

Free Standard

Detection properties

T Setting of 11% is possible

Free Setting of 11% is not possible

Tracking function available

T 1) Tracking function/contamination compensation

Free No tracking function

Setting

1 270° potentiometer

2 11-turn potentiometer

3 Teach button

Free No setting

Pin assignment of connector pin 4 / black cable wire

2 NPN, light switching

N NPN, dark switching

4 PNP, light switching

P PNP, dark switching

6 Push-pull (PNP light switching, NPN dark switching)

G Push-pull (PNP dark switching, NPN light switching)

L IO-Link

Pin assignment of connector pin 2 / white cable wire

X Not assigned

2 NPN, light switching

N NPN, dark switching

4 PNP, light switching

P PNP, dark switching

6 Push-pull (PNP light switching, NPN dark switching)

G Push-pull (PNP dark switching, NPN light switching)

T Teach input

Connection technology

M12 M12 connector, 4-pin

6000 Cable, 6 m

1) Only possible in conjunction with the detection property "T".

Order guide

The sensors listed here are preferred types; current information at www.leuze.com.

Selection table		Order code →				
Equipment ↓		PRK18B.TT3/4P-M12 Part no. 50121229	PRK18B.TT3/P4-M12 Part no. 50126940	PRK18B.XT3/4P-M12 Part no. 50124943	PRK18B.TT3/2N-M12 Part no. 50121228	PRK18B.TT3/6G-M12 Part no. 50132521
Switching output	1x PNP, light switching					
	1x PNP, dark switching					
	2x PNP antivalent, pin 2: dark switching, pin 4: light switching	●		●		
	2x PNP antivalent, pin 2: light switching, pin 4: dark switching		●			
	1x NPN, dark switching					
	2x NPN, antivalent				●	
	2x push-pull switching output					●
	1 x IO-Link, 1 x PNP, dark switching					
	1 x IO-Link, 1 x NPN, dark switching					
Optical accuracy	Calibrated $\leq \pm 0.25^\circ$			●		
Switching frequency/response time/jitter	500Hz/1ms/320µs					
	1500Hz/333µs/110µs	●	●	●	●	●
	5000Hz/100µs/32µs					
Detection properties	Highly transparent bottles and glasses	●	●	●	●	●
	Highly transparent film < 20µm thick					
	Transparent containers	●	●	●	●	●
Tracking function	Exists	●	●	●	●	●
Setting	270° potentiometer					
	11-turn potentiometer					
	Teach button	●	●	●	●	●
Connection technology	M12 connector	●	●	●	●	●
	Cable, 6000mm					

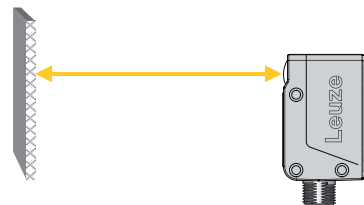
PRK18B

Tracking retro-reflective photoelectric sensors for bottles and films

Sensor setting via teach button



- The sensor is factory-adjusted for maximum operating range.
Recommendation: teach only if the desired objects are not reliably detected.
- **Prior to teaching:**
Clear the light path to the reflector!
The device setting is stored in a fail-safe way. A reconfiguration following power failure or switch-off is thus not required.

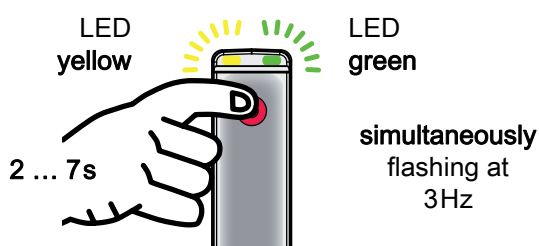


Teaching for 11% sensor sensitivity (full single bottles or film)

- Press teach button until both LEDs flash simultaneously.
- Release teach button.
- Ready.



After the teaching, the sensor switches when about 11% of the light beam are covered by the object.



Teaching for 18% sensor sensitivity (empty single bottles)

- Press teach button until both LEDs flash alternately.
- Release teach button.
- Ready.

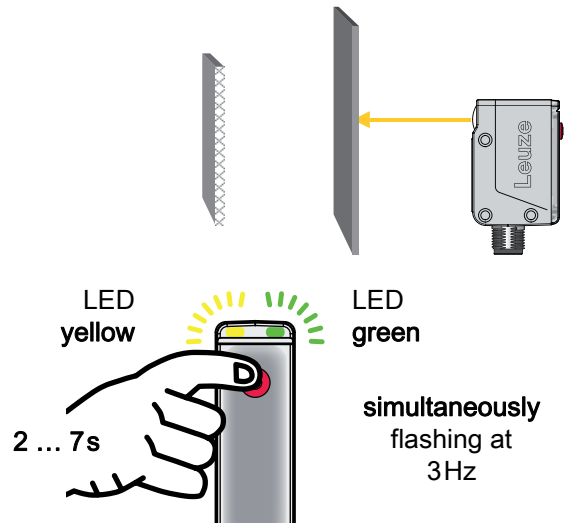


After the teaching, the sensor switches when about 18% of the light beam are covered by the object.



Teaching for maximum operating range (factory setting at delivery)

- Teach to maximum operating range only works with deactivated tracking function (see chapter Activating/deactivating the tracking function)
- Prior to teaching:
Interrupt the light path to the reflector!



- Press teach button until both LEDs flash simultaneously.
- Release teach button.
- Ready.

Activating/deactivating the tracking function

- Press teach button until only the green LED flashes
- Release teach button. The yellow LED displays the tracking function status for 2s:
 - Yellow LED ON = tracking activated (factory settings)
 - Yellow LED OFF = tracking deactivated
- After 2s: ready

