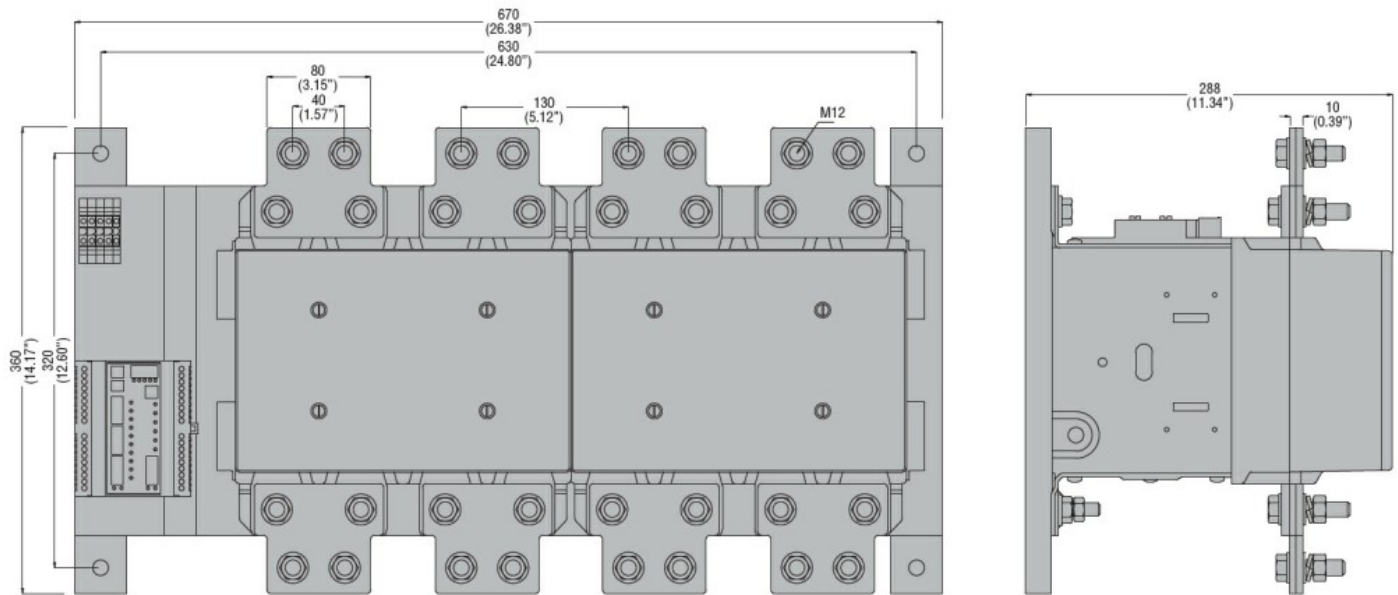




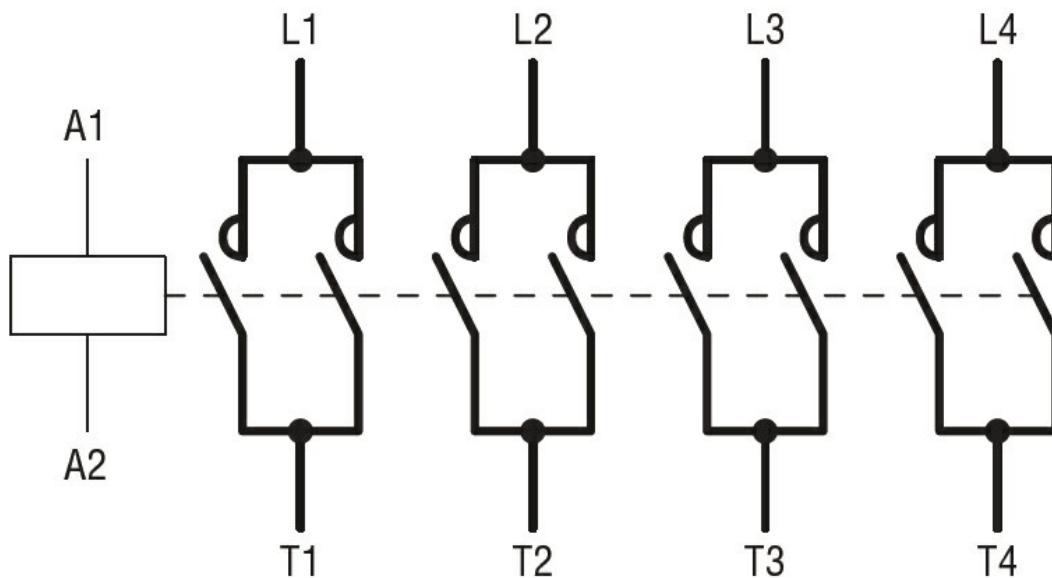
Product designation			Power contactor
Product type designation			B1250
Contact characteristics			
Number of poles		Nr.	4
Rated insulation voltage Ui IEC/EN		V	690
Rated impulse withstand voltage Uimp		kV	8
Operational frequency			
	min	Hz	25
	max	Hz	400
IEC Conventional free air thermal current Ith		A	1250
Operational current Ie			
	AC-1 (≤40°C)	A	1250
	AC-1 (≤55°C)	A	1050
	AC-1 (≤70°C)	A	880
Rated operational power AC-1 (T≤40°C)			
	230V	kW	480
	400V	kW	830
	500V	kW	1100
	690V	kW	1450
Short-time allowable current for 10s (IEC/EN60947-1)		A	6500
Protection fuse			
	gG (IEC)	A	1250
Making capacity (RMS value)		A	6300
Breaking capacity at voltage			
	440V	A	6300
	500V	A	5600
	690V	A	5000
Resistance per pole (average value)		m?	7
Power dissipation per pole (average value)			
	Ith	W	110
Tightening torque for terminals			
	min	Nm	35
	max	Nm	35
	min	lbin	25.8
	max	lbin	25.8
Max number of wires simultaneously connectable		Nr.	2
Conductor section			
AWG/Kcmil			
	max		2x 1500kcmil
Power terminal protection according to IEC/EN 60529			IP00
Mechanical features			
Operating position			
	normal		Vertical plan
	allowable		±30°
Fixing			Screw

Weight	g		5750
Conductor section	AWG/kcmil conductor section		
	max	2x 1500kcmil	
Auxiliary contact characteristics			
Thermal current I <sub>th</sub>	A	16	
IEC/EN 60947-5-1 designation	A600 - P600		
Operating current AC15	230V	A	3
	400V	A	1.9
	500V	A	1.4
Operating current DC12	110V	A	5.7
Operating current DC13	24V	A	5.7
	48V	A	2.9
	60V	A	2.3
	125V	A	0.6
	220V	A	0.2
	600V	A	1.2
Operations			
Mechanical life	cycles	5000000	
Electrical life	cycles	700000	
Safety related data			
Performance level B10d according to EN/ISO 13489-1	rated load	cycles	700000
	mechanical load	cycles	5000000
Mirror contacts according to IEC/EN 60947-4-1	yes		
EMC compatibility	yes		
AC coil operating			
Rated AC voltage at 50/60Hz, 60Hz	min	V	110
	max	V	125
AC operating voltage	of 50/60Hz coil powered at 50Hz		
	pick-up		
	min	%U <sub>s</sub>	80
	max	%U <sub>s</sub>	110
	drop-out		
	min	%U <sub>s</sub>	20
	max	%U <sub>s</sub>	60
	of 50/60Hz coil powered at 60Hz		
	pick-up		
	min	%U <sub>s</sub>	80
	max	%U <sub>s</sub>	110
	drop-out		
	min	%U <sub>s</sub>	20
	max	%U <sub>s</sub>	60
	of 60Hz coil powered at 60Hz		
	pick-up		
	min	%U <sub>s</sub>	80
	max	%U <sub>s</sub>	110
	drop-out		

		min	%Us	20
		max	%Us	60
AC average coil consumption at 20°C				
of 50/60Hz coil powered at 50Hz				
		in-rush	VA	800
		holding	VA	45
of 50/60Hz coil powered at 60Hz				
		in-rush	VA	800
		holding	VA	45
Dissipation at holding ≤20°C 50Hz			W	40
DC coil operating				
DC rated control voltage				
		min	V	110
		max	V	125
DC operating voltage				
pick-up				
		min	%Us	80
Max cycles frequency				
Mechanical operation			cycles/h	1200
Operating times				
Average time for Us control				
in AC				
		Closing NO		
		min	ms	300
		max	ms	450
		Opening NO		
		min	ms	70
		max	ms	130
in DC				
		Closing NO		
		min	ms	300
		max	ms	450
		Opening NO		
		min	ms	70
		max	ms	130
UL technical data				
Contact rating of auxiliary contacts according to UL			A600 - P600	
Ambient conditions				
Temperature				
Operating temperature				
		min	°C	-50
		max	°C	70
Storage temperature				
		min	°C	-60
		max	°C	80
Max altitude			m	3000
Resistance & Protection				
Pollution degree			3	
Dimensions				



### Wiring diagrams



### Certifications and compliance

#### Compliance

CSA C22.2 n° 60947-1

CSA C22.2 n° 60947-4-1

IEC/EN 60947-1

IEC/EN 60947-4-1

UL 60947-1

UL 60947-4-1

#### Certificates

/

### ETIM classification

ETIM 8.0

EC000066 -  
Power contactor,  
AC switching