



Product designation

Power contactor

Product type designation

B145

Contact characteristics

Number of poles	Nr.	3
Rated insulation voltage U_i IEC/EN	V	1000
Rated impulse withstand voltage U_{imp}	kV	8
Operational frequency	min	Hz 25
	max	Hz 400
IEC Conventional free air thermal current I_{th}	A	250
Operational current I_e	AC-1 ($\leq 40^\circ\text{C}$)	A 250
	AC-1 ($\leq 55^\circ\text{C}$)	A 235
	AC-1 ($\leq 70^\circ\text{C}$)	A 190
	AC-3 ($\leq 440\text{V} \leq 55^\circ\text{C}$)	A 150
	AC-4 (400V)	A 57
Rated operational power AC-3 ($T \leq 55^\circ\text{C}$)	230V	kW 46
	400V	kW 80
	415V	kW 88
	440V	kW 93
	500V	kW 100
	690V	kW 120
	1000V	kW 75
Rated operational power AC-1 ($T \leq 40^\circ\text{C}$)	230V	kW 91
	400V	kW 150
	500V	kW 196
	690V	kW 270
IEC max current I_e in DC1 with $L/R \leq 1\text{ms}$ with 1 poles in series	75V	A 220
	110V	A 110
	220V	A —
	330V	A —
	460V	A —
IEC max current I_e in DC1 with $L/R \leq 1\text{ms}$ with 2 poles in series	75V	A 220
	110V	A 150
	220V	A 130
	330V	A —
	460V	A —
IEC max current I_e in DC1 with $L/R \leq 1\text{ms}$ with 3 poles in series	75V	A 220
	110V	A 150
	220V	A 150

	330V	A	130
	460V	A	–
IEC max current Ie in DC1 with L/R ≤ 1ms with 4 poles in series			
	75V	A	220
	110V	A	150
	220V	A	150
	330V	A	150
	460V	A	130
IEC max current Ie in DC3-DC5 with L/R ≤ 15ms with 1 poles in series			
	75V	A	160
	110V	A	80
	220V	A	–
	330V	A	–
	460V	A	–
IEC max current Ie in DC3-DC5 with L/R ≤ 15ms with 2 poles in series			
	75V	A	160
	110V	A	120
	220V	A	90
	330V	A	–
	460V	A	–
IEC max current Ie in DC3-DC5 with L/R ≤ 15ms with 3 poles in series			
	75V	A	160
	110V	A	140
	220V	A	120
	330V	A	90
	460V	A	–
IEC max current Ie in DC3-DC5 with L/R ≤ 15ms with 4 poles in series			
	75V	A	160
	110V	A	140
	220V	A	140
	330V	A	140
	460V	A	90
Short-time allowable current for 10s (IEC/EN60947-1)		A	1300
Protection fuse			
	gG (IEC)	A	250
	aM (IEC)	A	160
Making capacity (RMS value)		A	1500
Breaking capacity at voltage			
	440V	A	1500
	500V	A	1400
	690V	A	1200
Resistance per pole (average value)		mΩ	0.3
Power dissipation per pole (average value)			
	Ith	W	14.5
	AC3	W	6.8
Tightening torque for terminals			
	min	Nm	18
	max	Nm	18
	min	lbin	13.3
	max	lbin	13.3
Tightening torque for coil terminal			
	min	Nm	1
	max	Nm	1

	min	I _{bin}	0.74
	max	I _{bin}	0.74
Max number of wires simultaneously connectable		Nr.	2
Conductor section			
	AWG/Kcmil		
	max		4/0
Power terminal protection according to IEC/EN 60529			IP00
Mechanical features			
Operating position			
	normal allowable		Vertical plan ±30°
Fixing			Screw
Weight		g	5420
Conductor section			
	AWG/kcmil conductor section		
	max		4/0
Operations			
Mechanical life		cycles	10000000
Electrical life		cycles	1100000
Safety related data			
Performance level B10d according to EN/ISO 13489-1			
	rated load mechanical load	cycles cycles	1100000 10000000
Mirror contacts according to IEC/EN 60947-4-1			yes
EMC compatibility			yes
AC coil operating			
Rated AC voltage at 50/60Hz		V	24
AC operating voltage			
	of 50/60Hz coil powered at 50Hz		
	pick-up		
	min	%U _s	80
	max	%U _s	110
	drop-out		
	min	%U _s	20
	max	%U _s	60
	of 50/60Hz coil powered at 60Hz		
	pick-up		
	min	%U _s	80
	max	%U _s	110
	drop-out		
	min	%U _s	20
	max	%U _s	60
	of 60Hz coil powered at 60Hz		
	pick-up		
	min	%U _s	80
	max	%U _s	110
	drop-out		
	min	%U _s	20
	max	%U _s	60
AC average coil consumption at 20°C			
	of 50/60Hz coil powered at 50Hz		
	in-rush	VA	300
	holding	VA	10

of 50/60Hz coil powered at 60Hz

	in-rush	VA	300
	holding	VA	10
Dissipation at holding ≤20°C 50Hz		W	10

DC coil operating

DC rated control voltage		V	24
--------------------------	--	---	----

DC operating voltage

pick-up

min	%Us	80
max	%Us	110

drop-out

min	%Us	20
max	%Us	60

Average coil consumption ≤20°C

in-rush	W	300
holding	W	10

Max cycles frequency

Mechanical operation	cycles/h	2400
----------------------	----------	------

Operating times

Average time for Us control

in AC

Closing NO

min	ms	60
max	ms	100

Opening NO

min	ms	25
max	ms	60

in DC

Closing NO

min	ms	60
max	ms	100

Opening NO

min	ms	25
max	ms	60

UL technical data

Full-load current (FLA) for three-phase AC motor

at 480V	A	124
at 600V	A	125

Yielded mechanical performance

for three-phase AC motor

200/208V	HP	50
220/230V	HP	50
460/480V	HP	100

General USE

Contactor

AC current	A	250
------------	---	-----

Short-circuit protection fuse, 600V

Standard fault

Short circuit current	kA	5
Fuse rating	A	500
Fuse class		RK5

Ambient conditions

Temperature

Operating temperature

min	°C	-50
max	°C	70

Storage temperature

min	°C	-60
max	°C	80
	m	3000

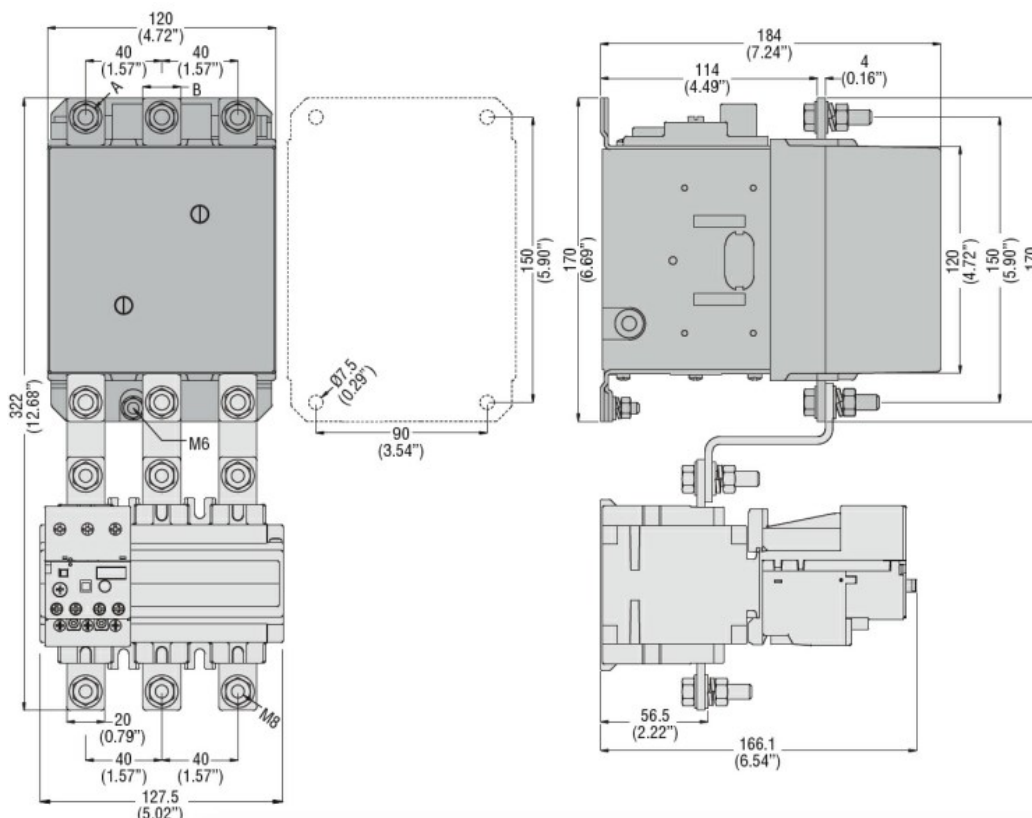
Max altitude

Resistance & Protection

Pollution degree

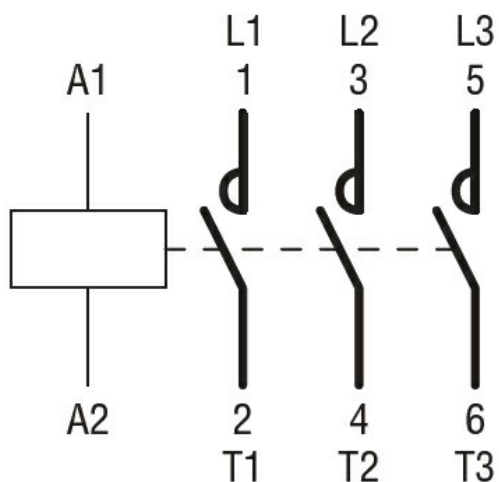
3

Dimensions



CONTACTOR TYPE	A	B
B115	M6	15 (0.59")
B145	M8	20 (0.79")
B180	M8	20 (0.79")

Wiring diagrams



Certifications and compliance

Compliance

CSA C22.2 n° 60947-1

CSA C22.2 n° 60947-4-1

IEC/EN 60947-1

IEC/EN 60947-4-1

UL 60947-1

UL 60947-4-1

Certificates

CCC

cULus

EAC

ETIM classification

ETIM 8.0

EC000066 -
Power contactor,
AC switching