



Product designation		Power contactor	
Product type designation		B400	
Contact characteristics			
Number of poles		Nr.	4
Rated insulation voltage Ui IEC/EN		V	1000
Rated impulse withstand voltage Uimp		kV	8
Operational frequency			
	min	Hz	25
	max	Hz	400
IEC Conventional free air thermal current Ith		A	550
Operational current Ie			
	AC-1 (≤40°C)	A	550
	AC-1 (≤55°C)	A	430
	AC-1 (≤70°C)	A	360
	AC-3 (≤440V ≤55°C)	A	420
	AC-4 (400V)	A	200
Rated operational power AC-1 (T≤40°C)			
	230V	kW	200
	400V	kW	345
	500V	kW	452
	690V	kW	598
IEC max current Ie in DC1 with L/R ≤ 1ms with 1 poles in series			
	75V	A	400
	110V	A	250
	220V	A	--
	330V	A	--
	460V	A	--
IEC max current Ie in DC1 with L/R ≤ 1ms with 2 poles in series			
	75V	A	400
	110V	A	400
	220V	A	350
	330V	A	--
	460V	A	--
IEC max current Ie in DC1 with L/R ≤ 1ms with 3 poles in series			
	75V	A	400
	110V	A	400
	220V	A	400
	330V	A	350
	460V	A	--
IEC max current Ie in DC1 with L/R ≤ 1ms with 4 poles in series			
	75V	A	400
	110V	A	400
	220V	A	400
	330V	A	400
	460V	A	350

IEC max current Ie in DC3-DC5 with L/R ≤ 15ms with 1 poles in series

75V	A	350
110V	A	200
220V	A	--
330V	A	--
460V	A	--

IEC max current Ie in DC3-DC5 with L/R ≤ 15ms with 2 poles in series

75V	A	350
110V	A	350
220V	A	280
330V	A	--
460V	A	--

IEC max current Ie in DC3-DC5 with L/R ≤ 15ms with 3 poles in series

75V	A	350
110V	A	350
220V	A	350
330V	A	280
460V	A	--

IEC max current Ie in DC3-DC5 with L/R ≤ 15ms with 4 poles in series

75V	A	350
110V	A	350
220V	A	350
330V	A	280
460V	A	280

Short-time allowable current for 10s (IEC/EN60947-1)

A	3600
---	------

Protection fuse

gG (IEC)	A	630
aM (IEC)	A	400

Making capacity (RMS value)

A	4200
---	------

Breaking capacity at voltage

440V	A	4000
500V	A	3400
690V	A	3360

Resistance per pole (average value)

m?	0.2
----	-----

Power dissipation per pole (average value)

Ith	W	52
AC3	W	32

Tightening torque for terminals

min	Nm	35
max	Nm	35
min	lbin	25.8
max	lbin	25.8

Tightening torque for coil terminal

min	Nm	1
max	Nm	1
min	lbin	0.74
max	lbin	0.74

Max number of wires simultaneously connectable

Nr.	2
-----	---

Conductor section

AWG/Kcmil

max	2x 300 kcmil
-----	--------------

Power terminal protection according to IEC/EN 60529

IP00

**Mechanical features**

## Operating position

	normal allowable	Vertical plan ±30°
Fixing		Screw
Weight	g	1114

## Conductor section

AWG/kcmil conductor section

max

2x 300 kcmil

## Operations

Mechanical life	cycles	10000000
Electrical life	cycles	700000

## Safety related data

Performance level B10d according to EN/ISO 13489-1

	rated load	cycles	700000
	mechanical load	cycles	10000000

Mirror contacts according to IEC/EN 60947-4-1

yes

EMC compatibility

yes

## AC coil operating

Rated AC voltage at 50/60Hz, 60Hz

min	V	380
max	V	415

## AC operating voltage

of 50/60Hz coil powered at 50Hz  
pick-up

min	%Us	80
max	%Us	110

drop-out

min	%Us	20
max	%Us	60

of 50/60Hz coil powered at 60Hz  
pick-up

min	%Us	80
max	%Us	110

drop-out

min	%Us	20
max	%Us	60

of 60Hz coil powered at 60Hz  
pick-up

min	%Us	80
max	%Us	110

drop-out

min	%Us	20
max	%Us	60

## AC average coil consumption at 20°C

of 50/60Hz coil powered at 50Hz

in-rush	VA	300
holding	VA	10

of 50/60Hz coil powered at 60Hz

in-rush	VA	300
holding	VA	10

Dissipation at holding ≤20°C 50Hz

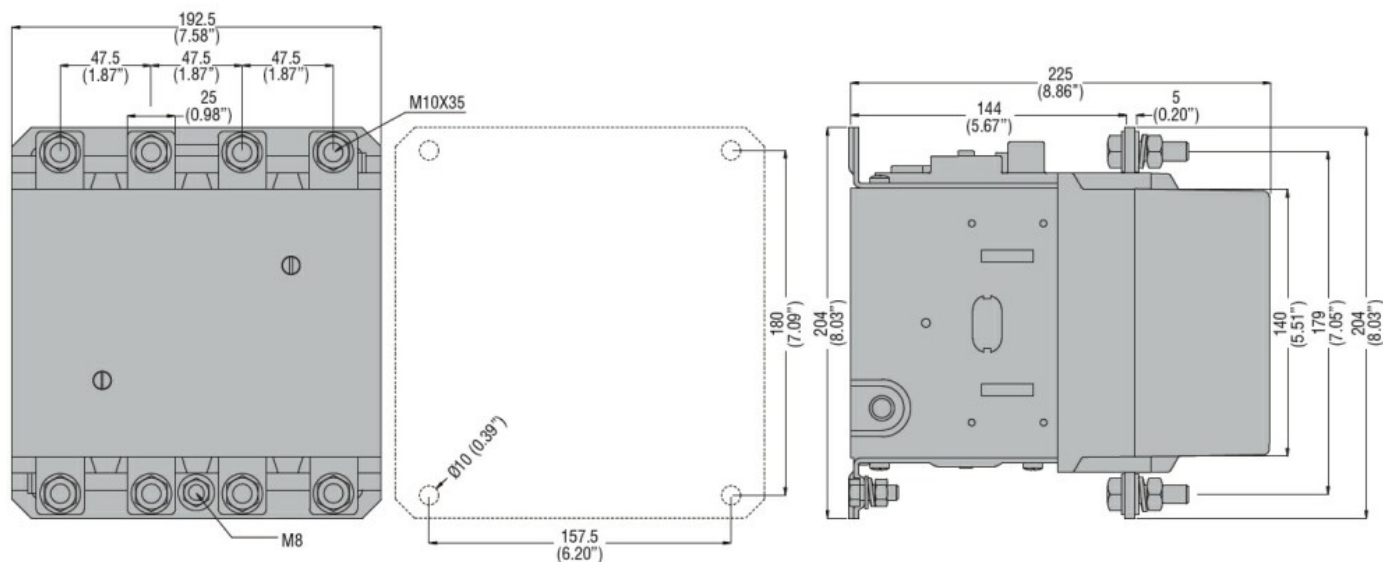
W	10
---	----

## DC coil operating

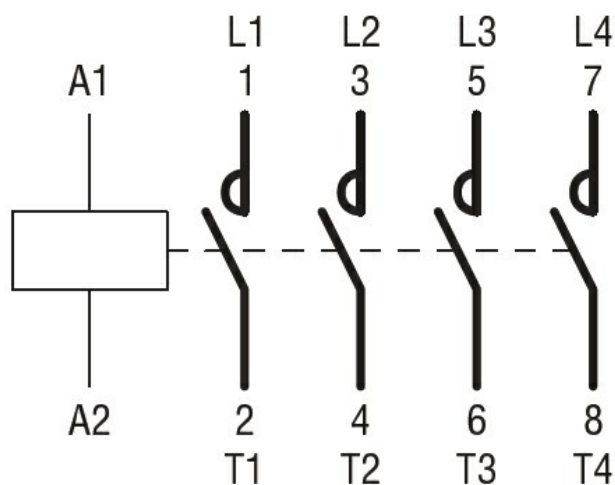
DC rated control voltage

		min	V	380	
		max	V	415	
DC operating voltage					
pick-up		min	%Us	80	
		max	%Us	110	
drop-out		min	%Us	20	
		max	%Us	60	
Average coil consumption ≤20°C					
		in-rush	W	300	
		holding	W	10	
Max cycles frequency					
Mechanical operation			cycles/h	2400	
Operating times					
Average time for Us control					
in AC	Closing NO	min	ms	80	
		max	ms	120	
		Opening NO	min	ms	30
			max	ms	75
	in DC	Closing NO	min	ms	80
			max	ms	120
		Opening NO	min	ms	30
			max	ms	75
UL technical data					
Full-load current (FLA) for three-phase AC motor					
		at 480V	A	414	
		at 600V	A	382	
Yielded mechanical performance					
for three-phase AC motor					
		200/208V	HP	125	
		220/230V	HP	150	
		460/480V	HP	350	
		575/600V	HP	400	
General USE					
Contactor		AC current	A	550	
Short-circuit protection fuse, 600V					
Standard fault		Short circuit current	kA	18	
		Fuse rating	A	800	
		Fuse class		L	
Ambient conditions					
Temperature					
Operating temperature		min	°C	-50	
		max	°C	70	
Storage temperature					

	min	°C	-60
	max	°C	80
Max altitude		m	3000
Resistance & Protection			
Pollution degree			3
Dimensions			



#### Wiring diagrams



#### Certifications and compliance

##### Compliance

CSA C22.2 n° 60947-1  
CSA C22.2 n° 60947-4-1  
IEC/EN 60947-1  
IEC/EN 60947-4-1  
UL 60947-1  
UL 60947-4-1

##### Certificates

CCC  
cULus  
EAC

#### ETIM classification

ETIM 8.0

EC000066 -  
Power contactor,  
AC switching