



Product designation		Power contactor	
Product type designation		B500	
Contact characteristics			
Number of poles		Nr.	4
Rated insulation voltage Ui IEC/EN		V	1000
Rated impulse withstand voltage Uimp		kV	8
Operational frequency			
	min	Hz	25
	max	Hz	400
IEC Conventional free air thermal current Ith		A	700
Operational current Ie			
	AC-1 (≤40°C)	A	700
	AC-1 (≤55°C)	A	550
	AC-1 (≤70°C)	A	500
	AC-3 (≤440V ≤55°C)	A	520
	AC-4 (400V)	A	240
Rated operational power AC-1 (T≤40°C)			
	230V	kW	252
	400V	kW	438
	500V	kW	575
	690V	kW	755
IEC max current Ie in DC1 with L/R ≤ 1ms with 1 poles in series			
	75V	A	650
	110V	A	320
	220V	A	--
	330V	A	--
	460V	A	--
IEC max current Ie in DC1 with L/R ≤ 1ms with 2 poles in series			
	75V	A	650
	110V	A	550
	220V	A	450
	330V	A	--
	460V	A	--
IEC max current Ie in DC1 with L/R ≤ 1ms with 3 poles in series			
	75V	A	650
	110V	A	600
	220V	A	600
	330V	A	450
	460V	A	--
IEC max current Ie in DC1 with L/R ≤ 1ms with 4 poles in series			
	75V	A	650
	110V	A	600
	220V	A	600
	330V	A	600
	460V	A	450

IEC max current  $I_e$  in DC3-DC5 with  $L/R \leq 15\text{ms}$  with 1 poles in series

75V	A	550
110V	A	320
220V	A	--
330V	A	--
460V	A	--

IEC max current  $I_e$  in DC3-DC5 with  $L/R \leq 15\text{ms}$  with 2 poles in series

75V	A	550
110V	A	550
220V	A	450
330V	A	--
460V	A	--

IEC max current  $I_e$  in DC3-DC5 with  $L/R \leq 15\text{ms}$  with 3 poles in series

75V	A	550
110V	A	550
220V	A	550
330V	A	450
460V	A	--

IEC max current  $I_e$  in DC3-DC5 with  $L/R \leq 15\text{ms}$  with 4 poles in series

75V	A	550
110V	A	550
220V	A	550
330V	A	450
460V	A	450

Short-time allowable current for 10s (IEC/EN60947-1)

A	4050
---	------

Protection fuse

gG (IEC)	A	800
aM (IEC)	A	500

Making capacity (RMS value)

A	6300
---	------

Breaking capacity at voltage

440V	A	6300
500V	A	5600
690V	A	5000

Resistance per pole (average value)

m?	0.14
----	------

Power dissipation per pole (average value)

$I_{th}$	W	68.6
AC3	W	35

Tightening torque for terminals

min	Nm	35
max	Nm	35
min	lbin	25.8
max	lbin	25.8

Tightening torque for coil terminal

min	Nm	1
max	Nm	1
min	lbin	0.74
max	lbin	0.74

Max number of wires simultaneously connectable

Nr.	2
-----	---

Conductor section

AWG/Kcmil

max	2x 500 kcmil
-----	--------------

Power terminal protection according to IEC/EN 60529

IP00

**Mechanical features**

## Operating position

	normal allowable	Vertical plan ±30°
Fixing		Screw
Weight	g	2163

## Conductor section

AWG/kcmil conductor section

max

2x 500 kcmil

## Operations

Mechanical life	cycles	5000000
Electrical life	cycles	700000

## Safety related data

Performance level B10d according to EN/ISO 13489-1

	rated load mechanical load	cycles	700000
		cycles	5000000
Mirror contacts according to IEC/EN 60947-4-1			yes
EMC compatibility			yes

## AC coil operating

Rated AC voltage at 50/60Hz, 60Hz

min	V	440
max	V	415

## AC operating voltage

of 50/60Hz coil powered at 50Hz  
pick-up

min	%Us	80
max	%Us	110

drop-out

min	%Us	20
max	%Us	60

of 50/60Hz coil powered at 60Hz  
pick-up

min	%Us	80
max	%Us	110

drop-out

min	%Us	20
max	%Us	60

of 60Hz coil powered at 60Hz  
pick-up

min	%Us	80
max	%Us	110

drop-out

min	%Us	20
max	%Us	60

## AC average coil consumption at 20°C

of 50/60Hz coil powered at 50Hz

in-rush	VA	400
holding	VA	18

of 50/60Hz coil powered at 60Hz

in-rush	VA	400
holding	VA	18

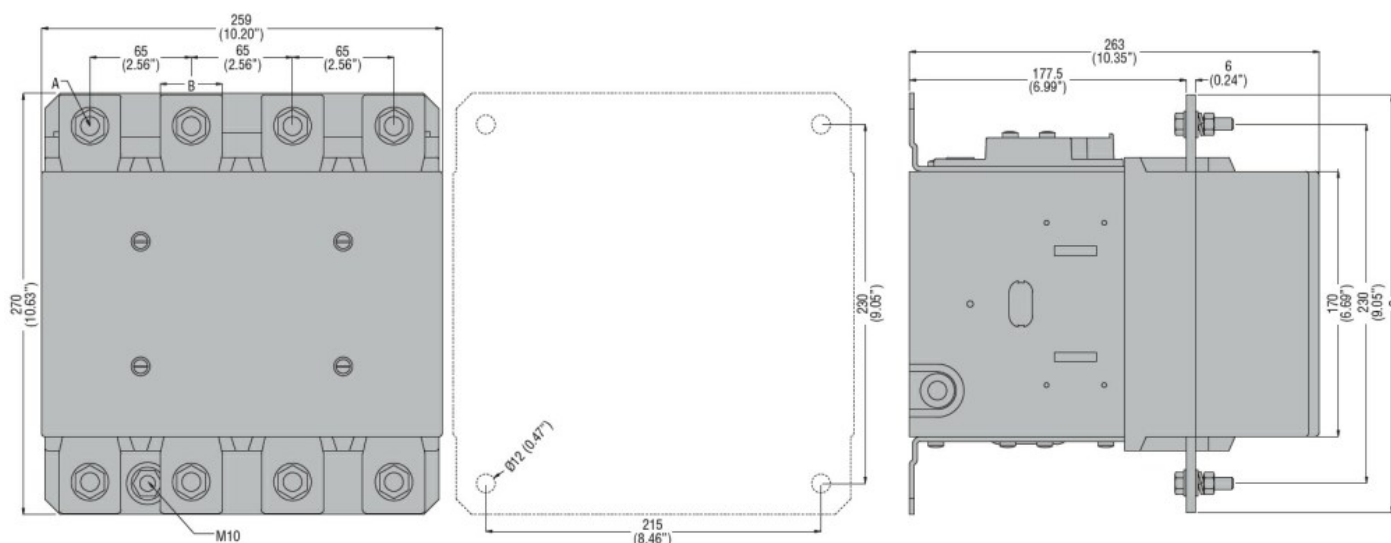
## Dissipation at holding ≤20°C 50Hz

W	18
---	----

## DC coil operating

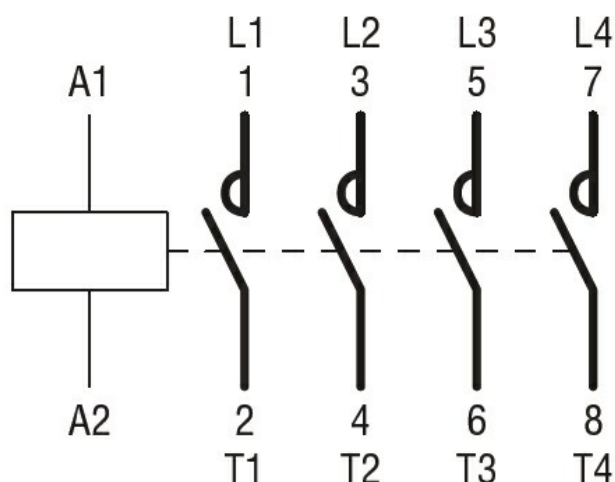
DC rated control voltage

		min	V	440	
		max	V	415	
DC operating voltage					
pick-up			min	%Us	80
			max	%Us	110
			min	%Us	20
			max	%Us	60
drop-out					
		min	%Us	20	
		max	%Us	60	
Average coil consumption ≤20°C					
		in-rush	W	400	
		holding	W	18	
Max cycles frequency					
Mechanical operation			cycles/h	1200	
Operating times					
Average time for Us control					
in AC					
		Closing NO			
		min	ms	110	
		max	ms	180	
		Opening NO			
		min	ms	60	
		max	ms	100	
in DC					
		Closing NO			
		min	ms	110	
		max	ms	180	
		Opening NO			
		min	ms	60	
		max	ms	100	
UL technical data					
General USE					
Contactor					
		AC current	A	700	
Short-circuit protection fuse, 600V					
Standard fault					
		Short circuit current	kA	18	
		Fuse rating	A	1200	
		Fuse class		L	
Ambient conditions					
Temperature					
Operating temperature					
		min	°C	-50	
		max	°C	70	
Storage temperature					
		min	°C	-60	
		max	°C	80	
Max altitude			m	3000	



CONTACTOR TYPE	A	B	C
B500	M10	35 (1.38")	265 (10.43")
B630	M12	40 (1.57")	270 (10.63")

## Wiring diagrams



## Certifications and compliance

### Compliance

CSA C22.2 n° 60947-1  
CSA C22.2 n° 60947-4-1  
IEC/EN 60947-1  
IEC/EN 60947-4-1  
UL 60947-1  
UL 60947-4-1

### Certificates

CCC  
cULus  
EAC

## ETIM classification

ETIM 8.0

EC000066 -  
Power contactor,  
AC switching