



Auxiliary
contactor
BGF00

Product designation

Product type designation

Contact characteristics

Number of poles	Nr.	4
Rated insulation voltage U_i IEC/EN	V	690
Rated impulse withstand voltage U_{imp}	kV	6
Operational frequency	min max	Hz Hz 25 400
IEC Conventional free air thermal current I_{th}	A	10
Short-time allowable current for 10s (IEC/EN60947-1)	A	0
Protection fuse	gG (IEC)	A 16
Tightening torque for terminals	min max min max	Nm Nm lbin lbin 0.8 1 9 9
Tightening torque for coil terminal	min max min max	Nm Nm lbin lbin 0.8 1 9 9
Max number of wires simultaneously connectable	Nr.	2

Conductor section

AWG/Kcmil

	max	12
Flexible w/o lug conductor section	min max	mm ² mm ² 0.75 2.5
Flexible c/w lug conductor section	min max	mm ² mm ² 1.5 2.5
Flexible with insulated spade lug conductor section	min max	mm ² mm ² 1.5 2.5

Power terminal protection according to IEC/EN 60529 IP20 when wired

Mechanical features

Operating position

	normal allowable	Vertical plan $\pm 30^\circ$
Fixing		Screw / DIN rail 35mm
Weight	g	222

Conductor section	AWG/kcmil conductor section		
	max	12	
Auxiliary contact characteristics			
Thermal current I _{th}	A	10	
IEC/EN 60947-5-1 designation	A600 - Q600		
Operating current AC15	230V	A	3
	400V	A	1.9
	500V	A	1.4
Operating current DC12	110V	A	2.9
Operating current DC13	24V	A	2.9
	48V	A	1.4
	60V	A	1.1
	125V	A	0.3
	220V	A	0.1
	600V	A	0.6
Operations			
Mechanical life	cycles	20000000	
Safety related data			
Performance level B10d according to EN/ISO 13489-1	mechanical load	cycles	20000000
Mirror contats according to IEC/EN 609474-4-1	YES		
EMC compatibility	yes		
DC coil operating			
DC rated control voltage	V	110	
DC operating voltage			
pick-up	min	%Us	75
	max	%Us	115
drop-out	min	%Us	10
	max	%Us	25
Average coil consumption ≤20°C	in-rush	W	3.2
	holding	W	3.2
Max cycles frequency			
Mechanical operation	cycles/h	3600	
Operating times			
Average time for U _s control			
in AC			
Closing NO	min	ms	12
	max	ms	21
Opening NO	min	ms	9
	max	ms	18
Closing NC	min	ms	17
	max	ms	26
Opening NC			

		min	ms	7
		max	ms	17
in DC				
	Closing NO			
		min	ms	18
		max	ms	25
	Opening NO			
		min	ms	2
		max	ms	3
	Closing NC			
		min	ms	3
		max	ms	5
	Opening NC			
		min	ms	11
		max	ms	17

UL technical data

Contact rating of auxiliary contacts according to UL A600 - Q600

Ambient conditions

Temperature

Operating temperature

min	°C	-50
max	°C	+70

Storage temperature

min	°C	-60
max	°C	+80

Max altitude

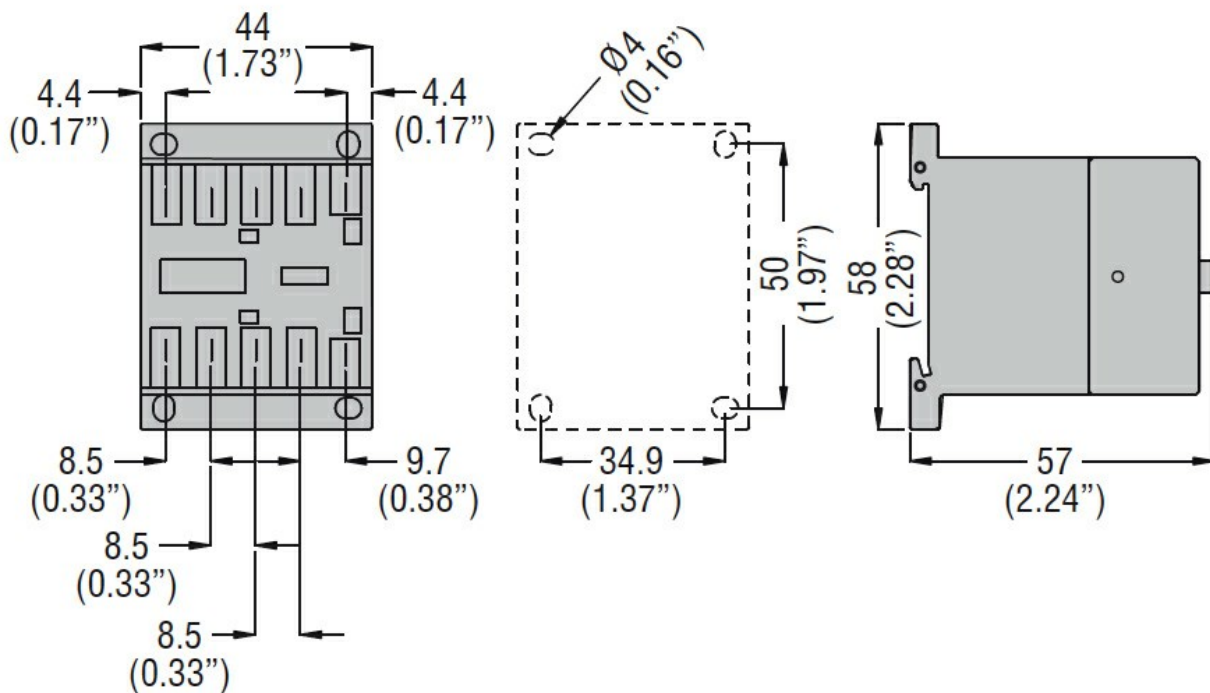
m 3000

Resistance & Protection

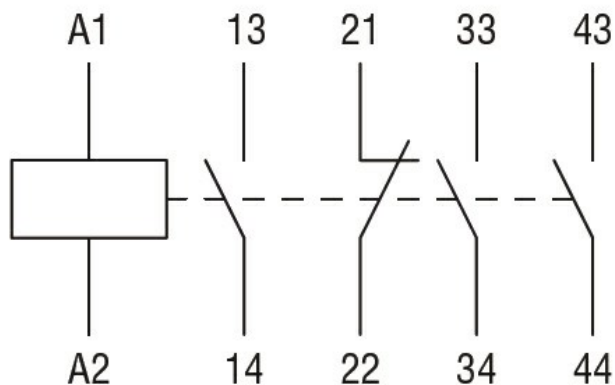
Pollution degree

3

Dimensions



Wiring diagrams



Certifications and compliance

Compliance	CSA C22.2 n° 60947-1
	CSA C22.2 n° 60947-5-1
	IEC/EN 60947-1
	IEC/EN 60947-5-1
	UL 60947-1
	UL 60947-5-1

Certificates	CCC
	cULus
	EAC

ETIM classification

ETIM 8.0	EC000196 - Contactor relay
----------	-------------------------------